

(SLO) Seznam nadomestnih delov
(HR) Spisak rezervnih delov
(GB) Spare parts list
(D) Ersatzteilliste

(I) Lista parti di ricambio
(F) Liste des pièces de rechange
(NL) Vervangonderdelenlijst

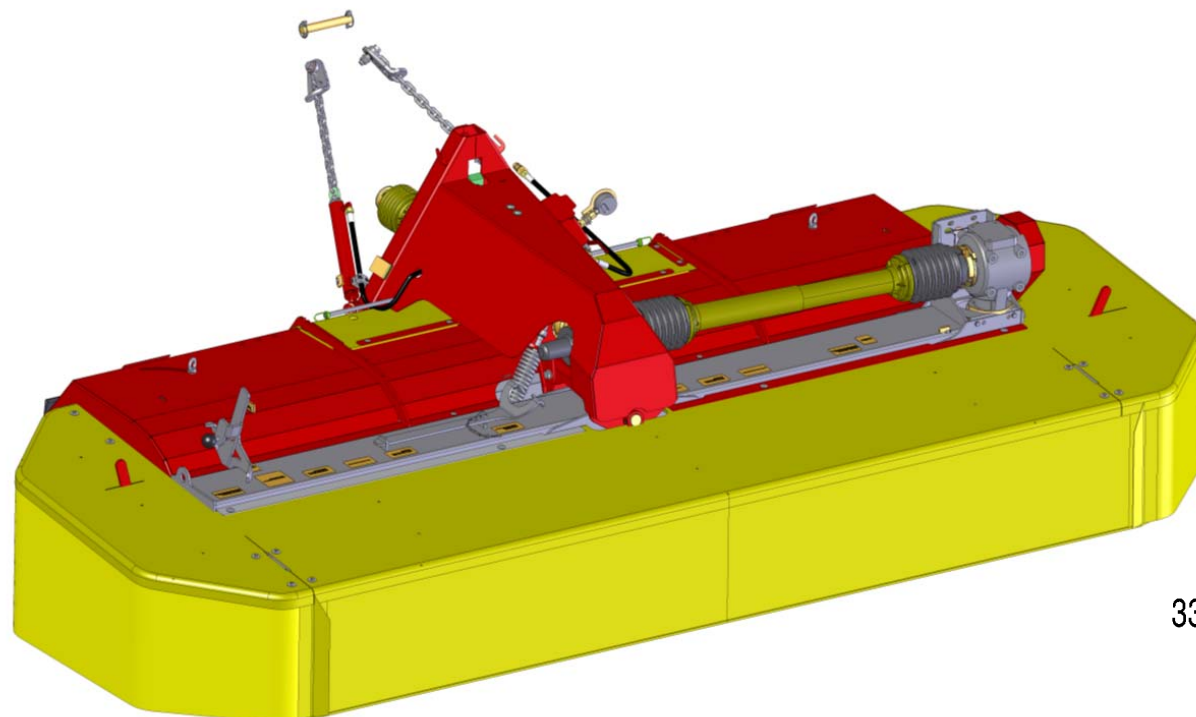


SIP

SILVERCUT 340 FFC

diskasti rotacijski kosilnik
diskasta rotaciona kosačica
falciatrice a disco rotante

rotary disc mower
scheibenmähwerke
faucheuse à disque rotatif
schijvenmaaier



Velja od tov. št. dalje:
Važi od tvor. broja dalje:
Ab masch. Nr.:
From mach Nr.:
Da macch. Nr.:
N° de machine:
Van mach nr.:

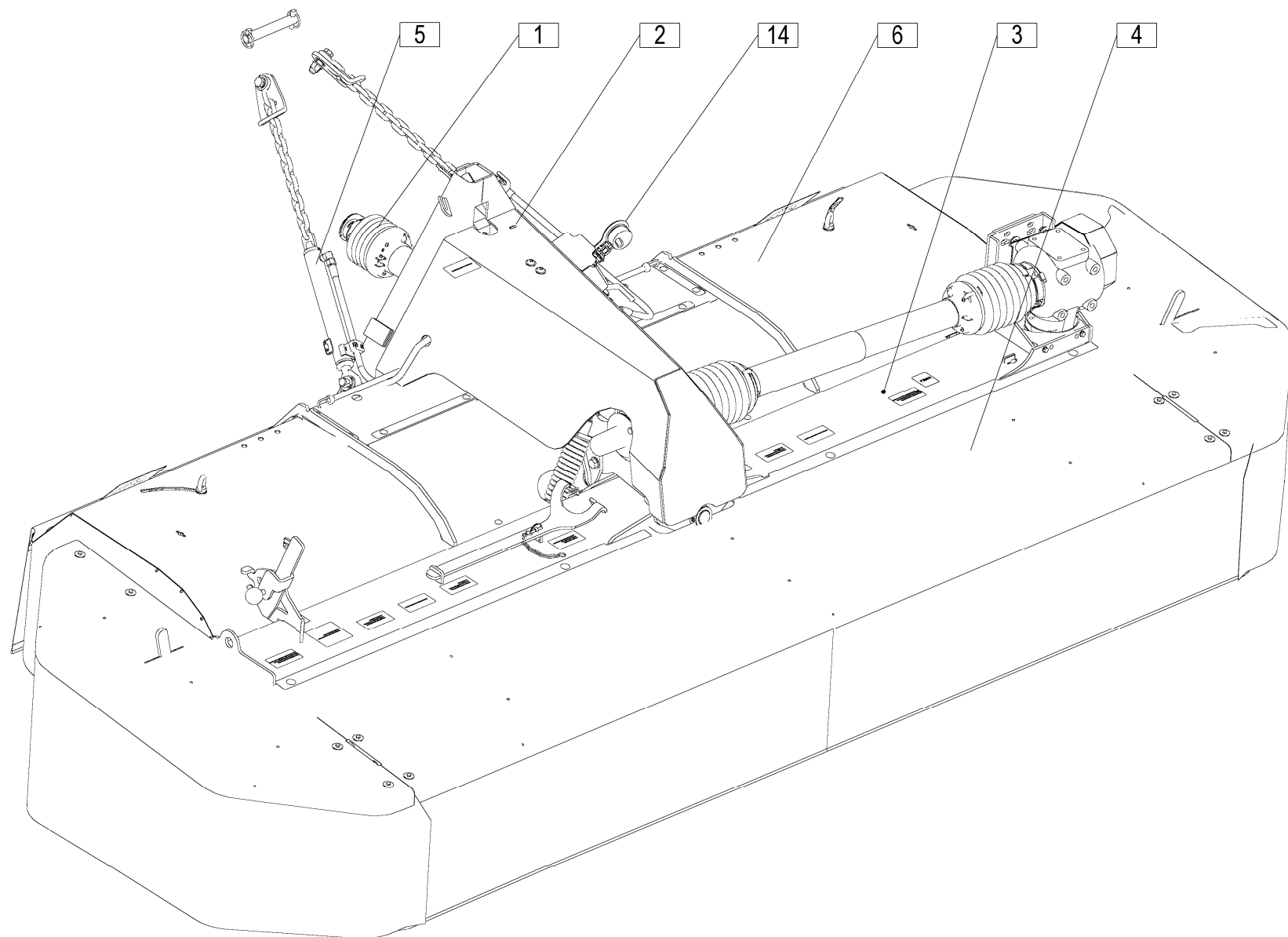
SILVERCUT 340 F FC = 034



STROJNA INDUSTRIJA d.d.
3311 Šempeter v Savinjski dolini
Slovenija

Tel: +386 (03) 7038 500
Fax: +386 (03) 7038 663
+386 (03) 7038 674

158601202



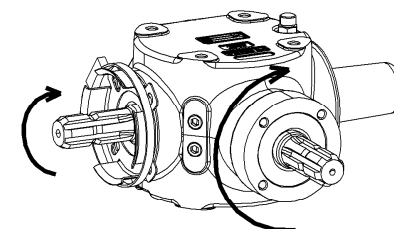
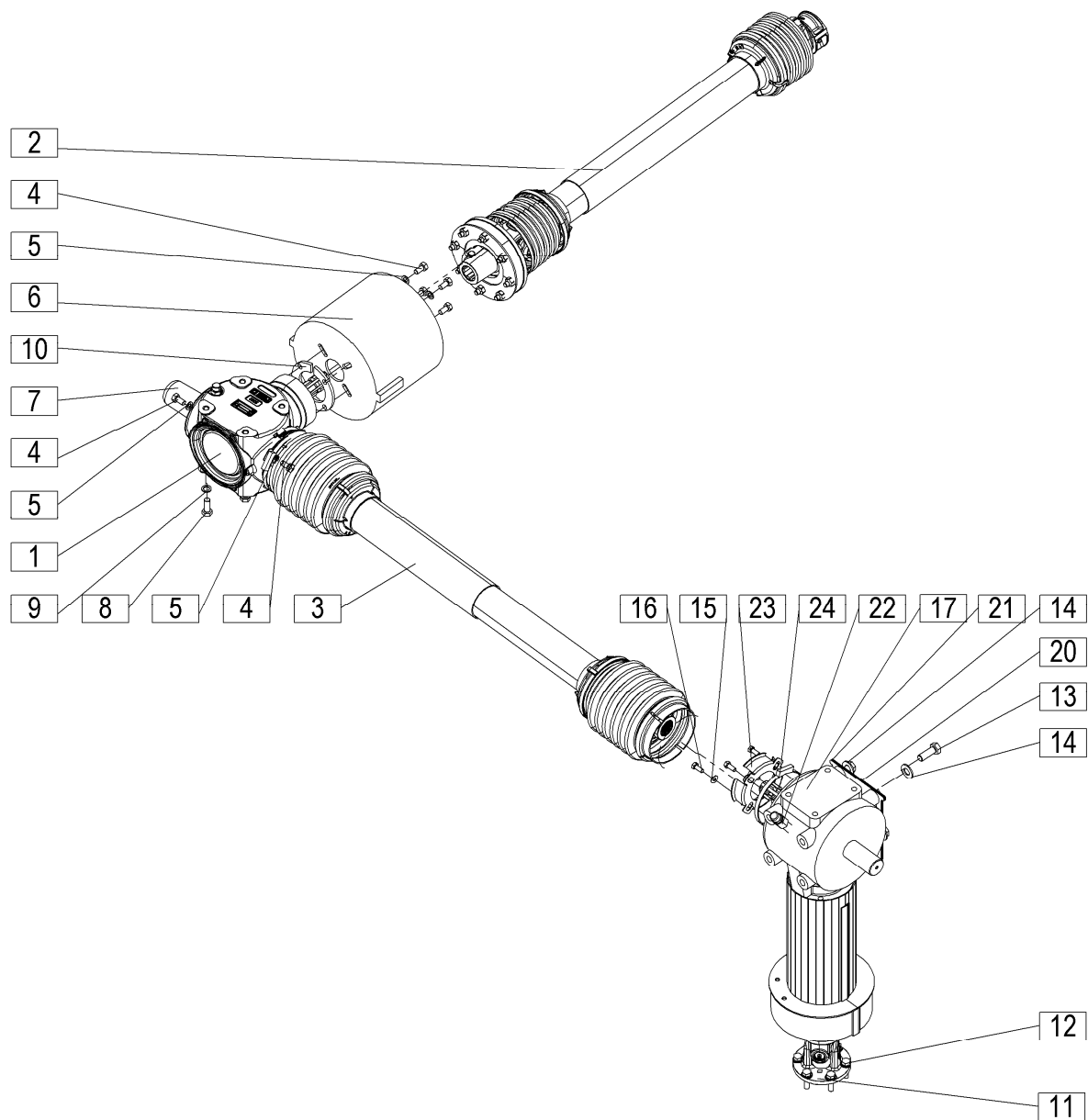
1000 min⁻¹

Velja od tov. št. dalje:
Važi od tvor. broja dalje:
Ab masch. Nr.:
From mach Nr.:
Da macch. Nr.:
N° de machine :
Van mach nr.:

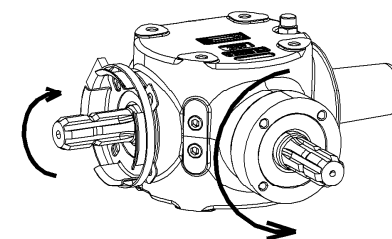
SILVERCUT 340F FC=+034

1

[illegible]

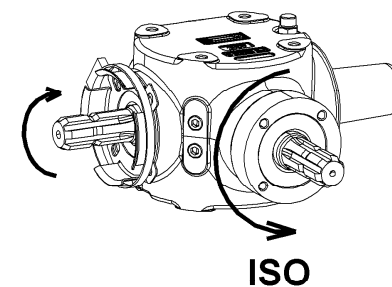
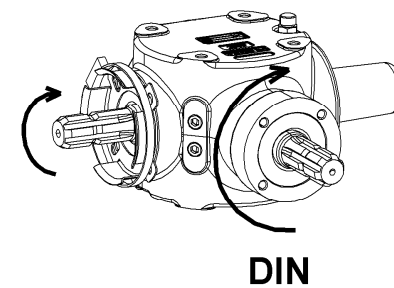
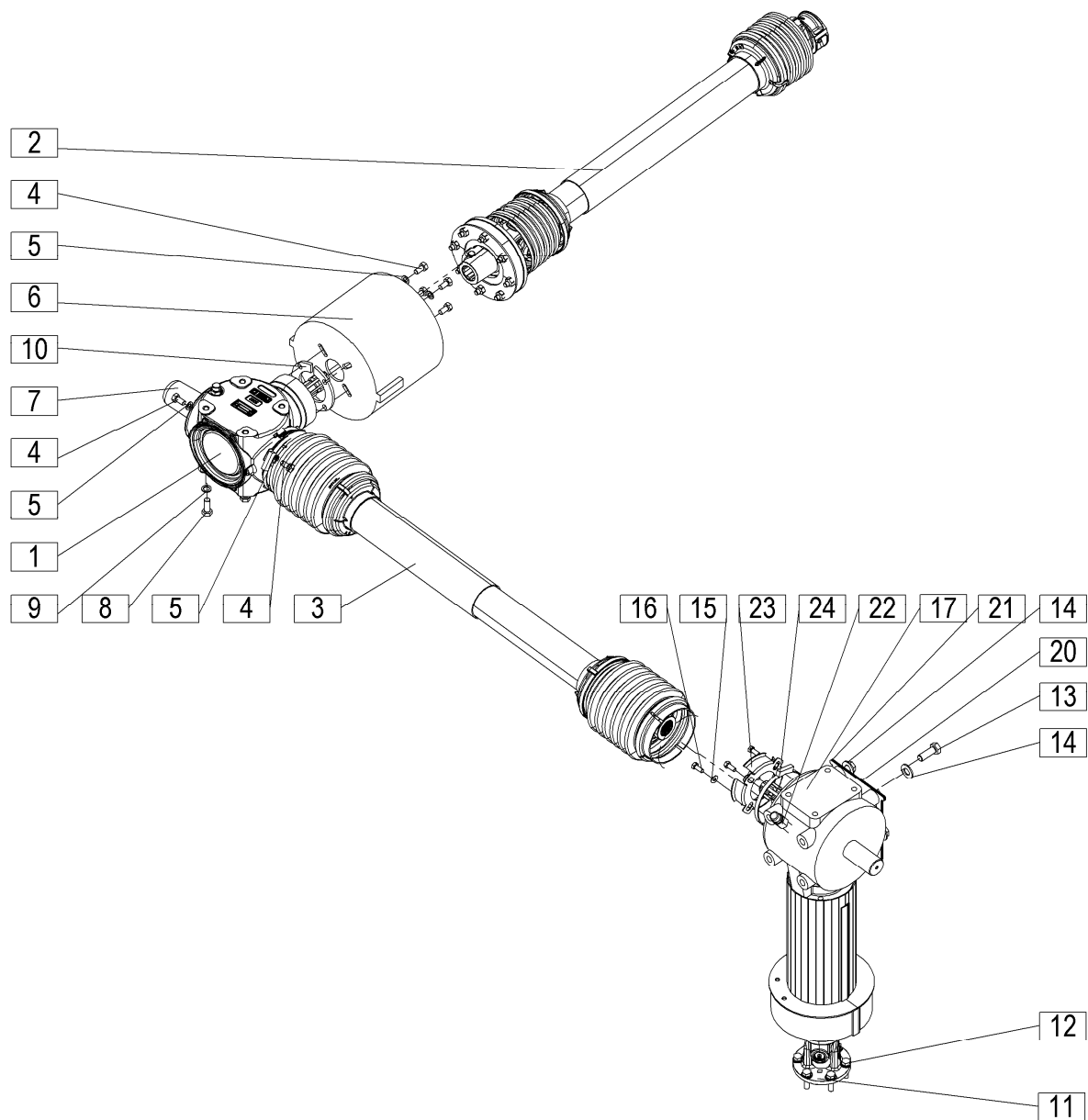


DIN

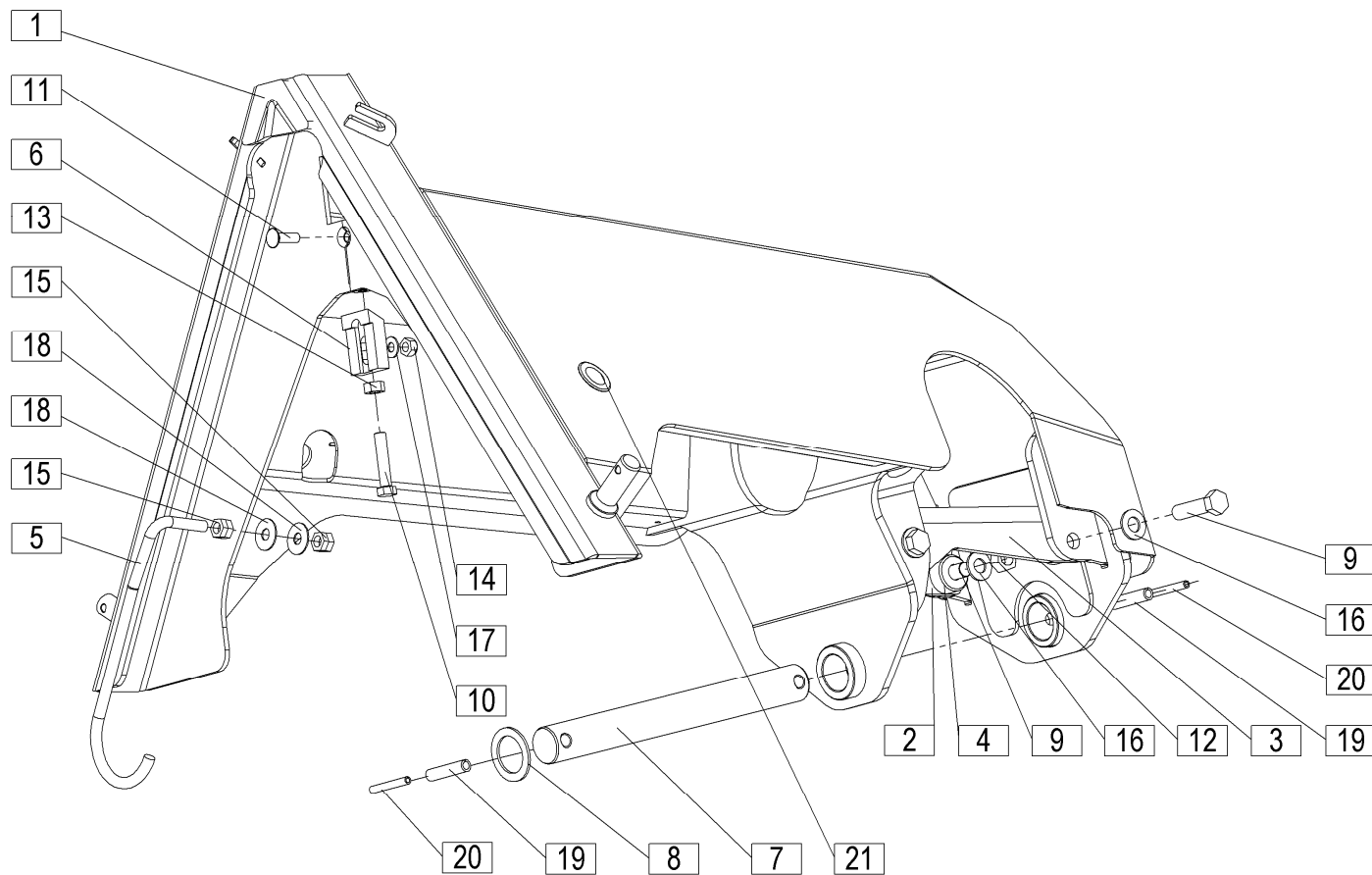


ISO

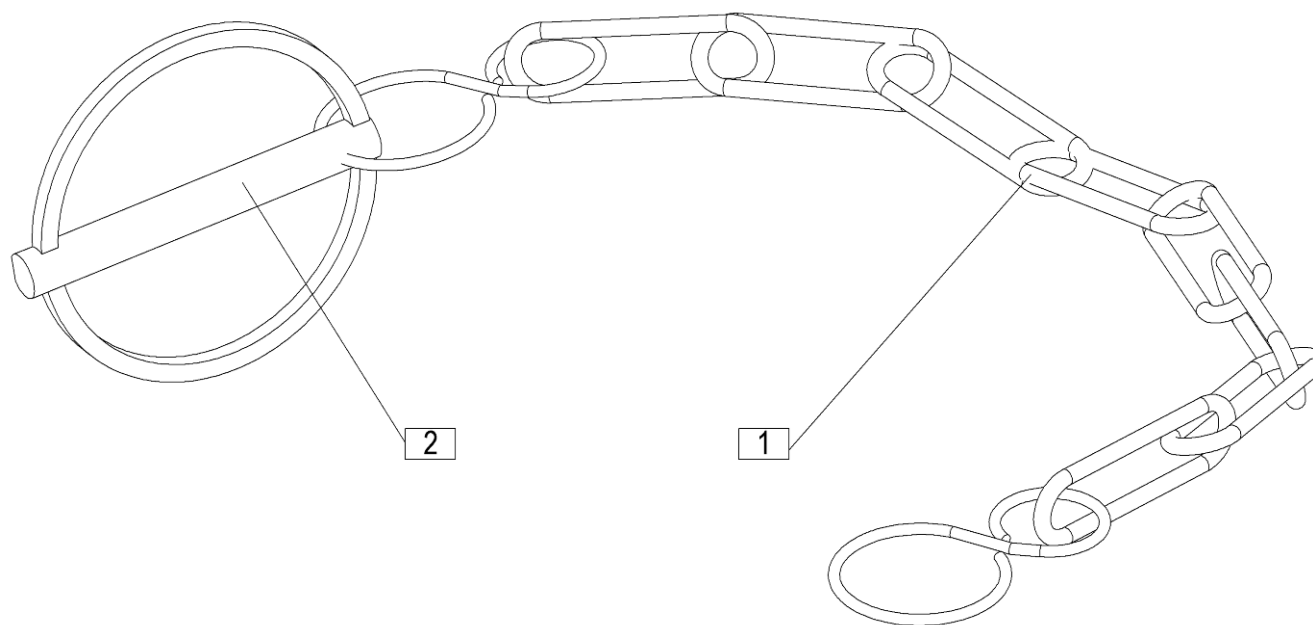
[illegible]



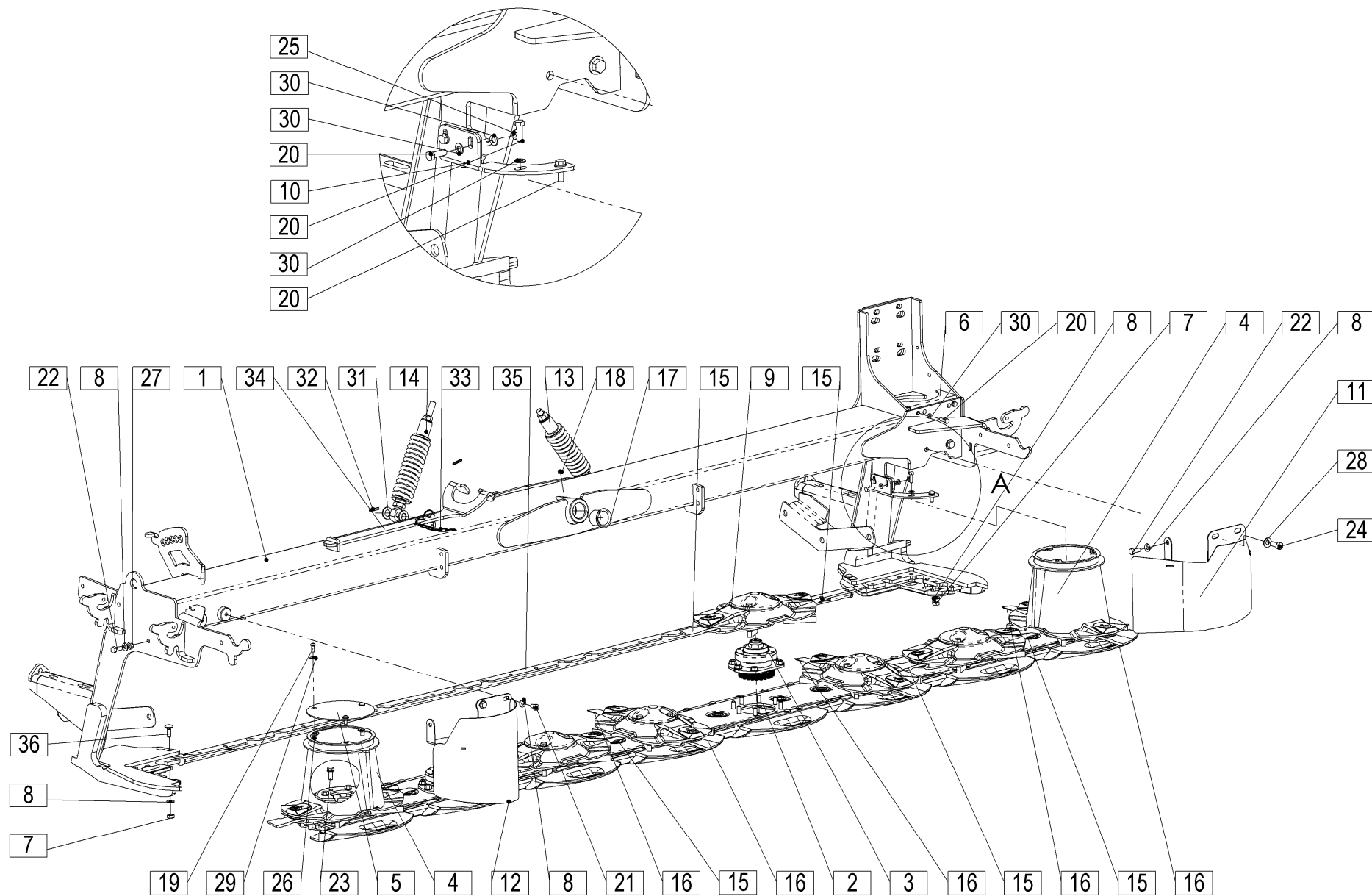
[illegible]



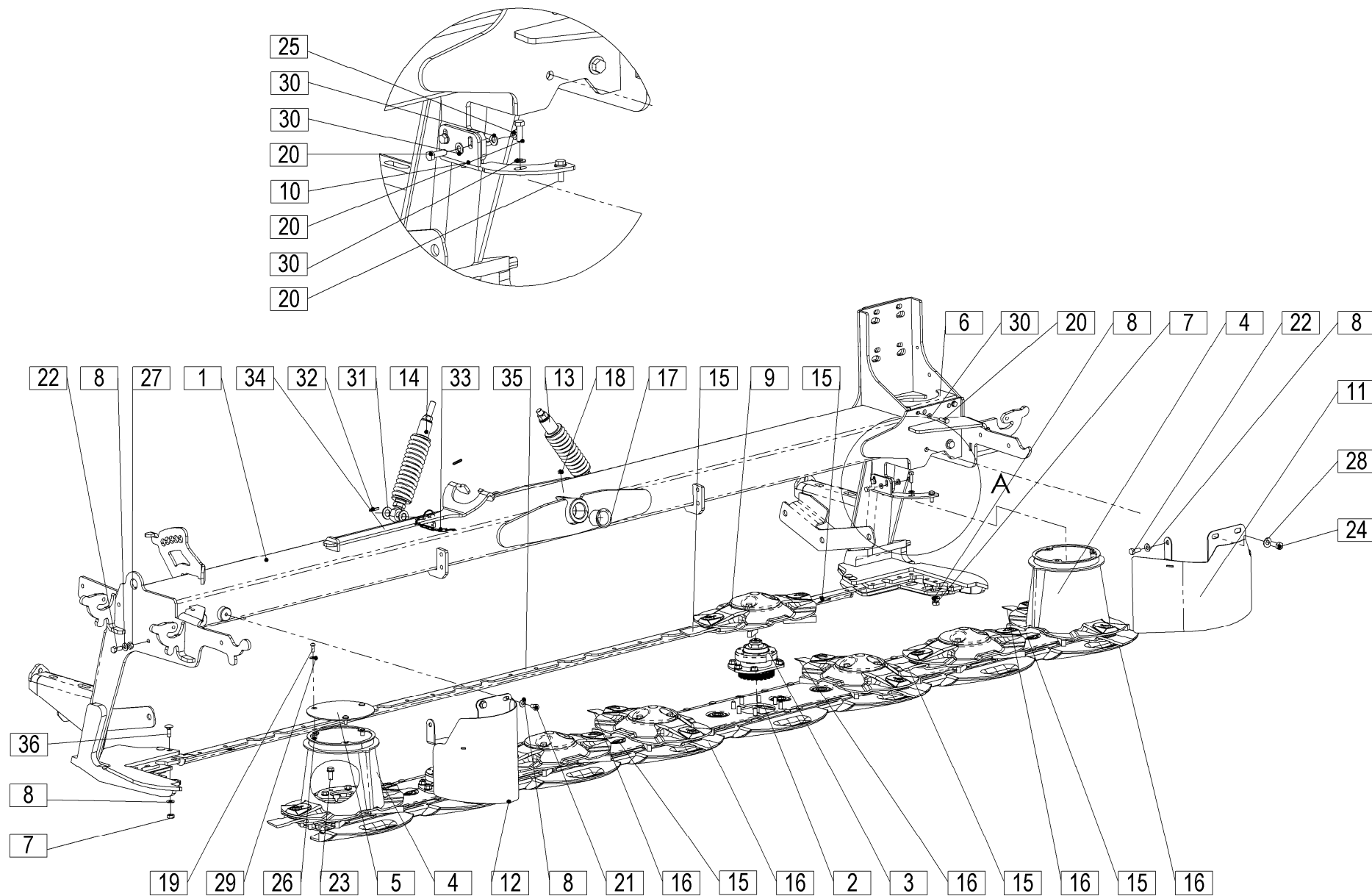
[illegible]



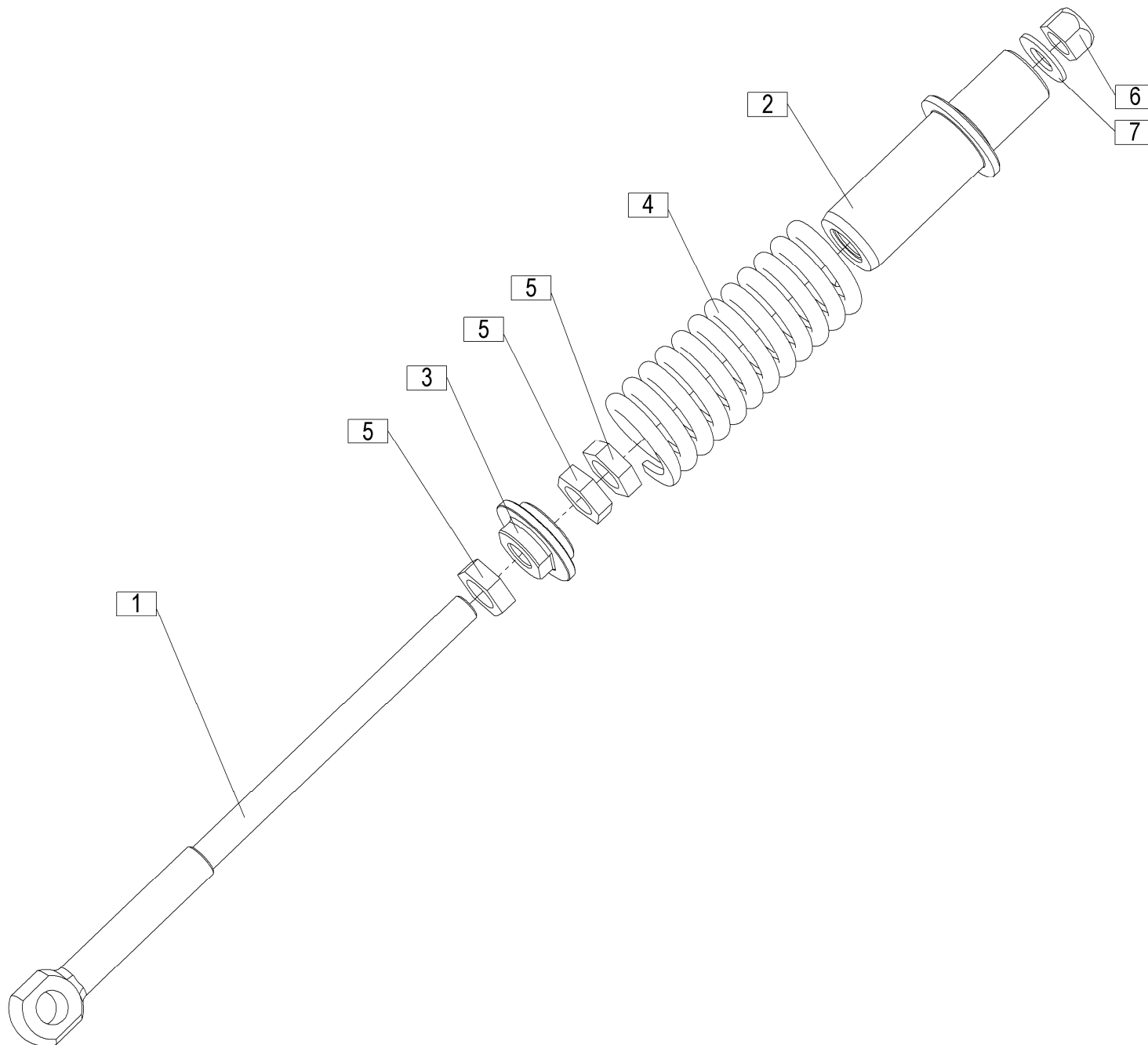
[illegible]



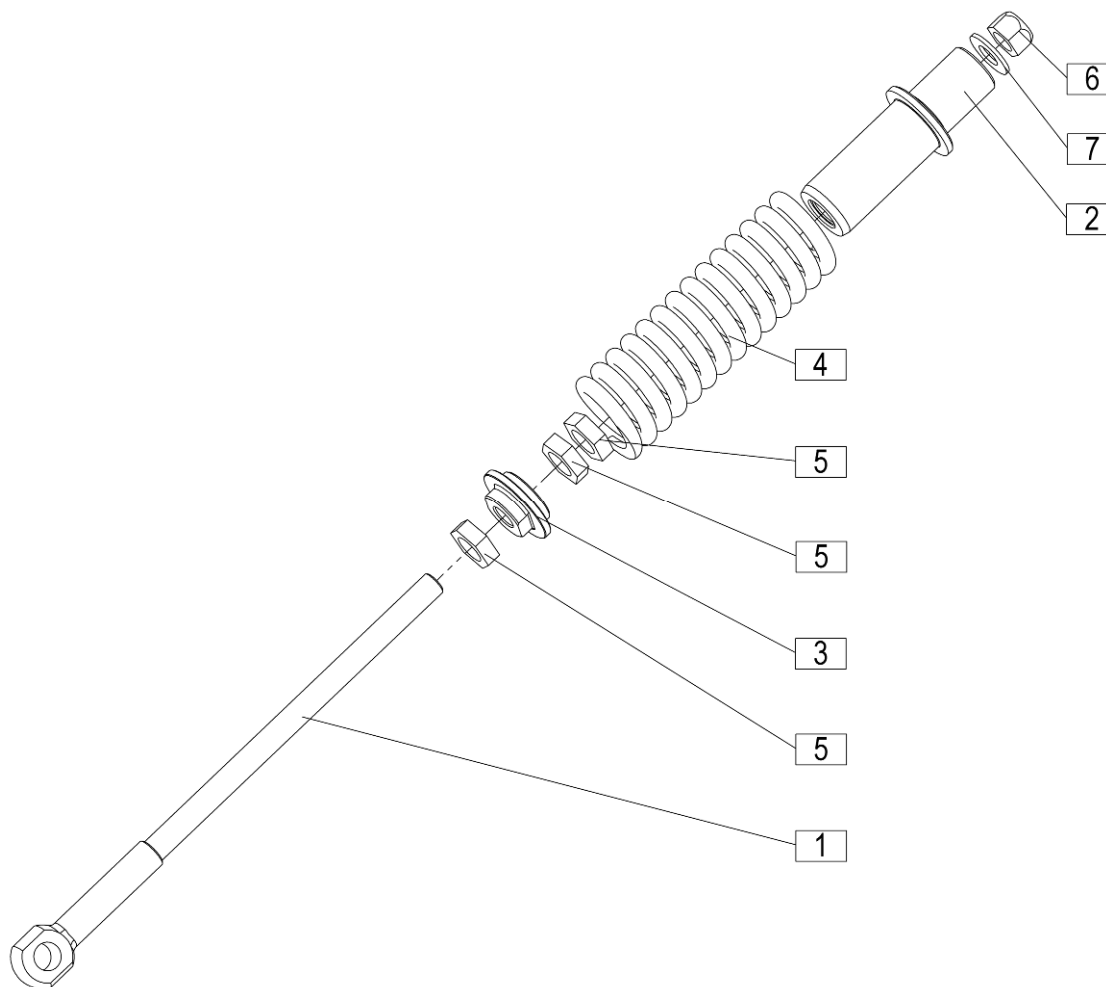
[illegible]



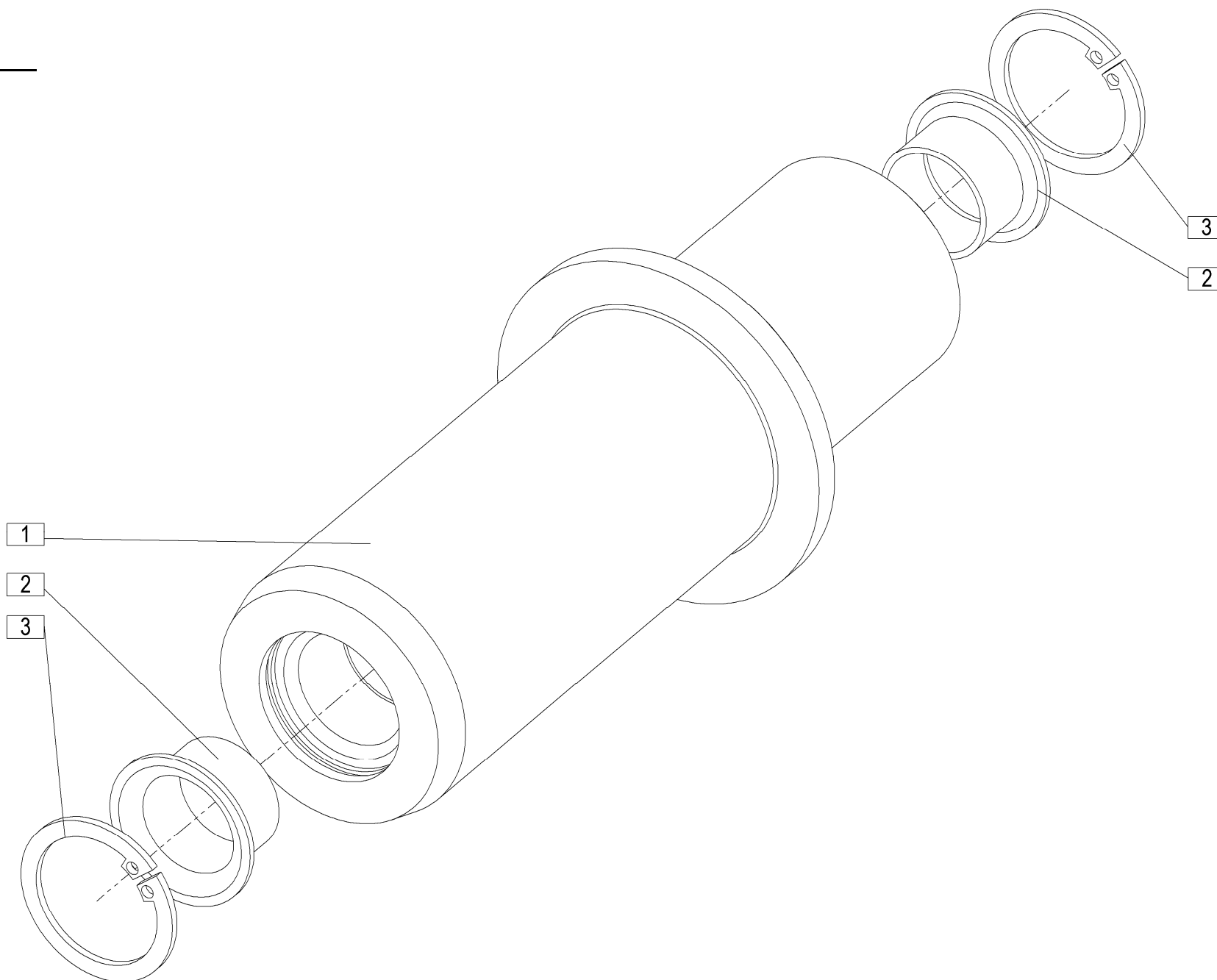
[illegible]



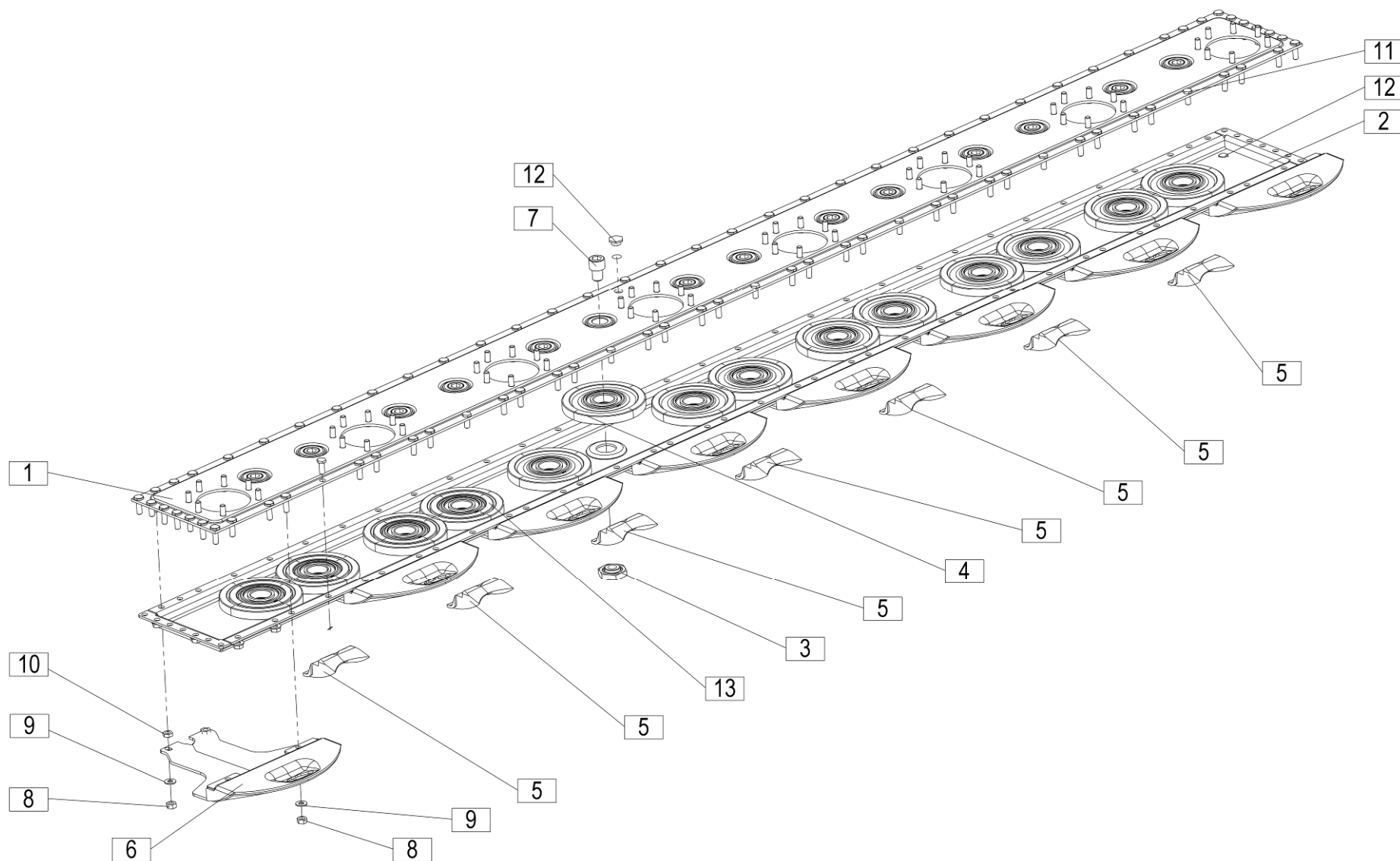
[illegible]



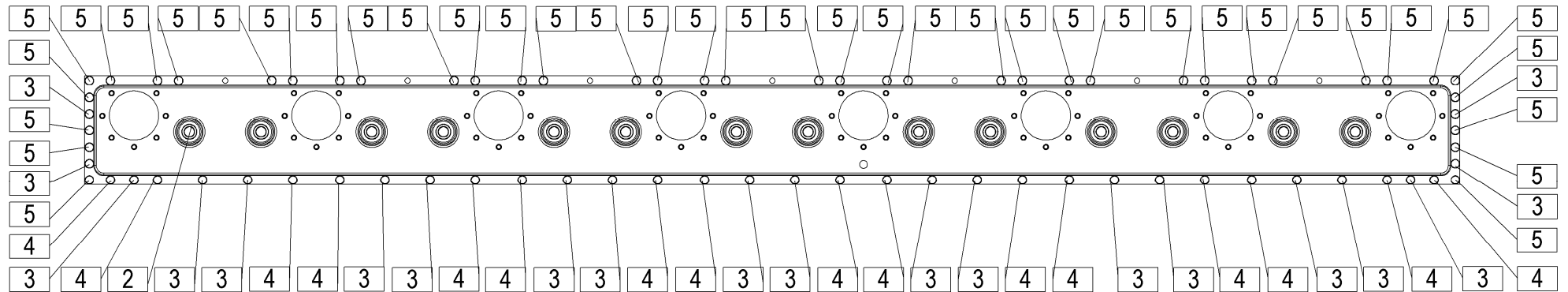
[illegible]



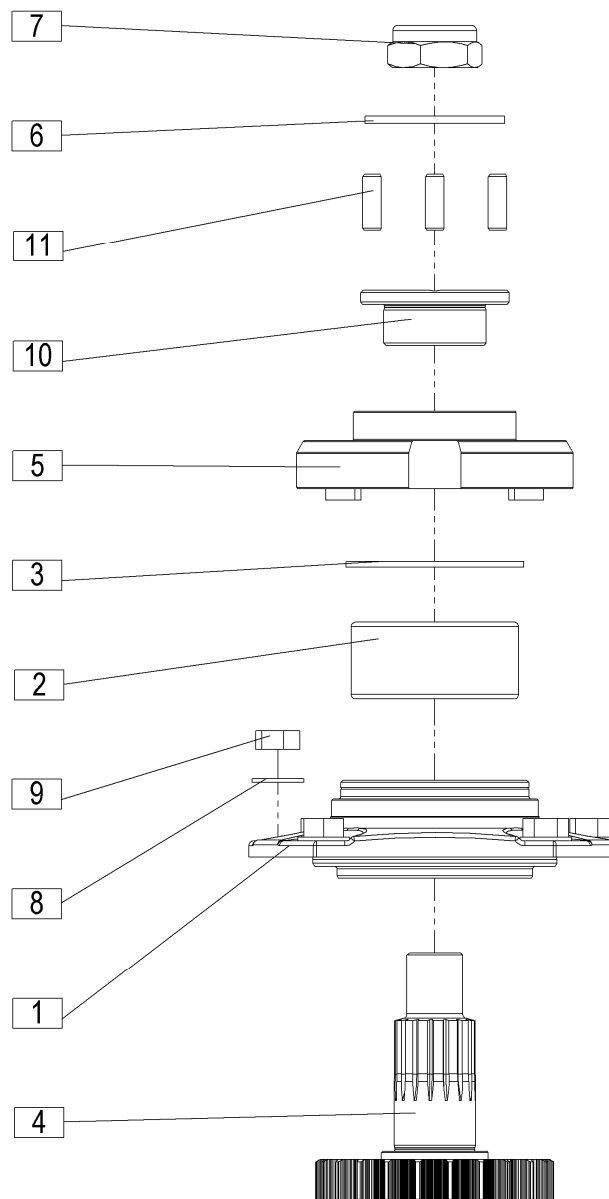
[illegible]



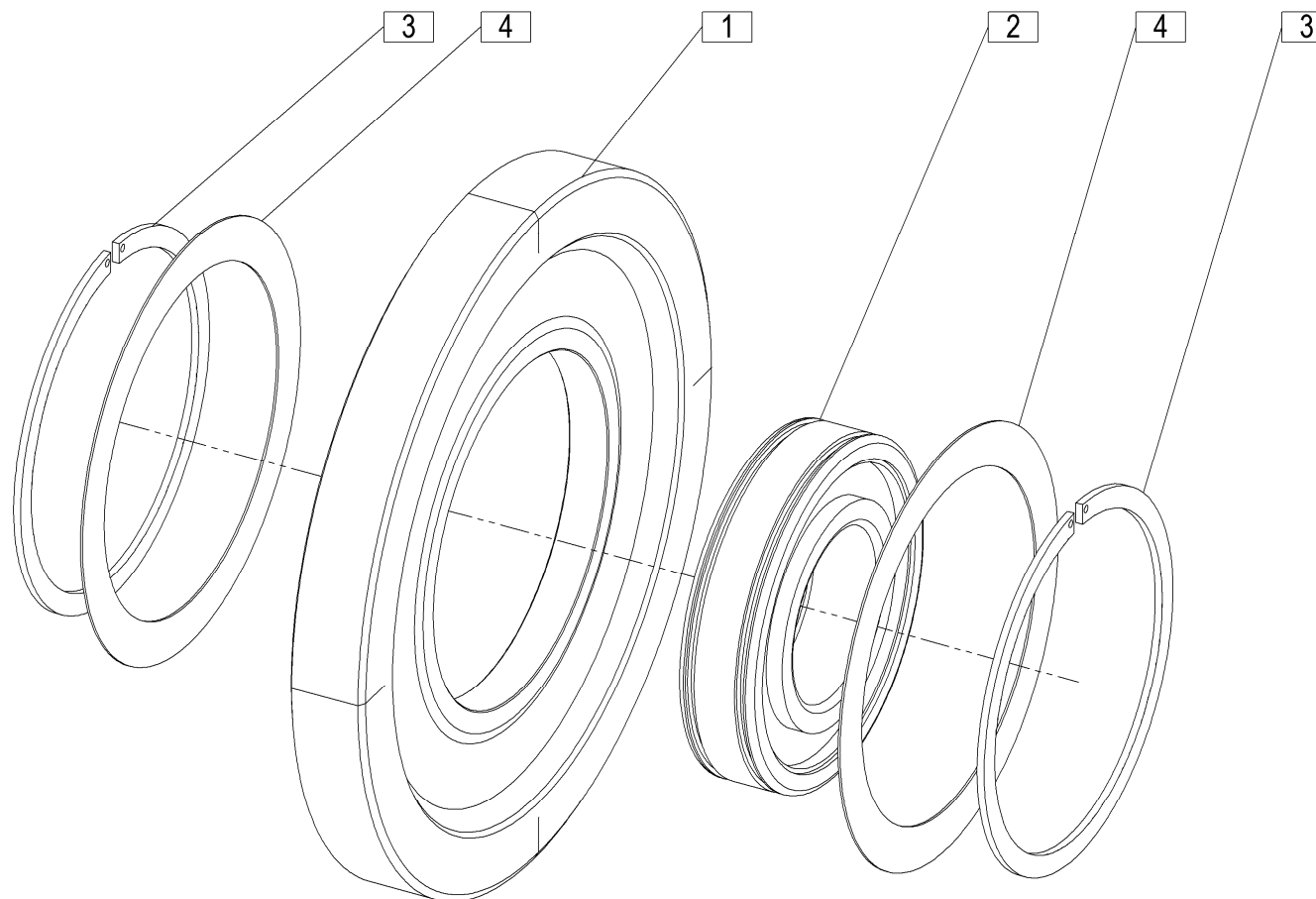
[illegible]



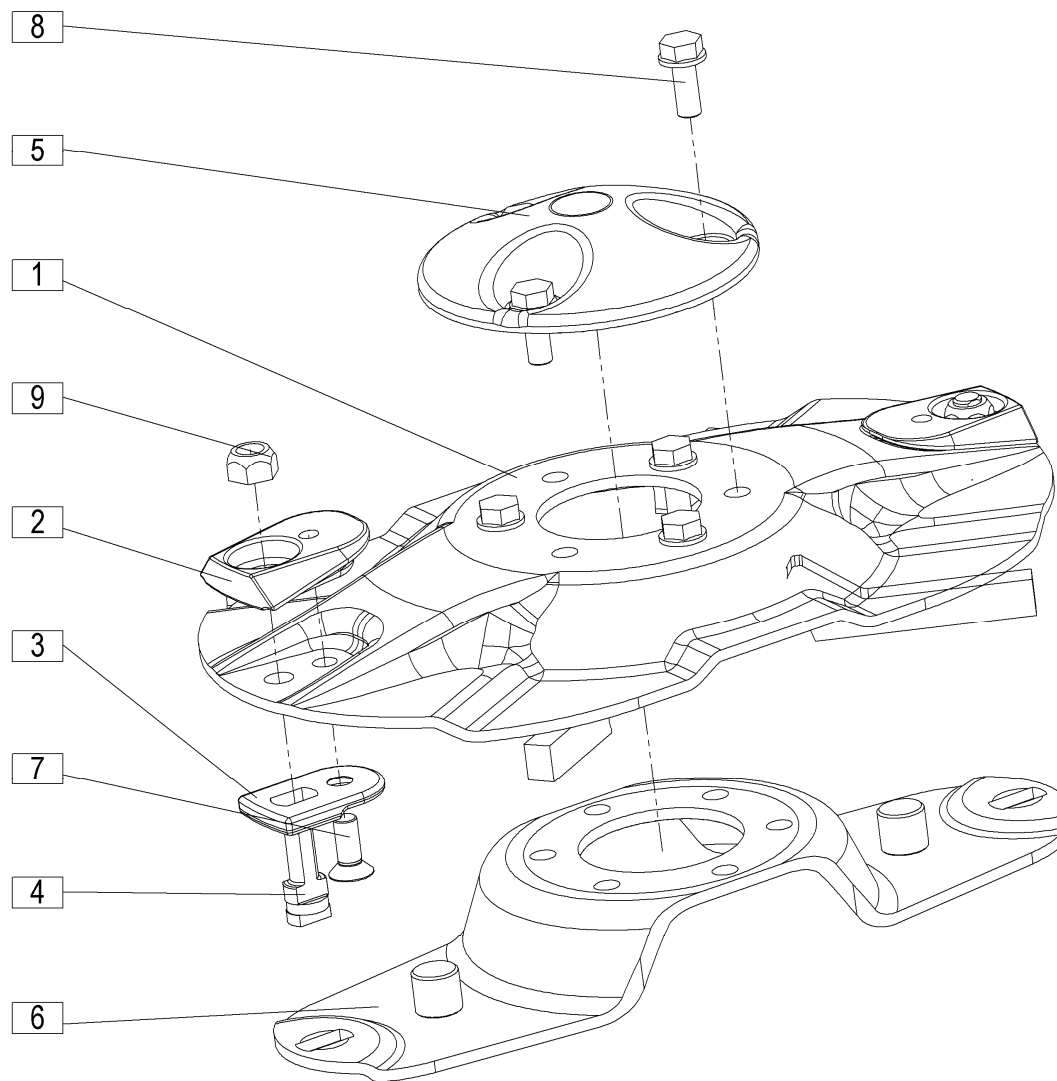
[illegible]



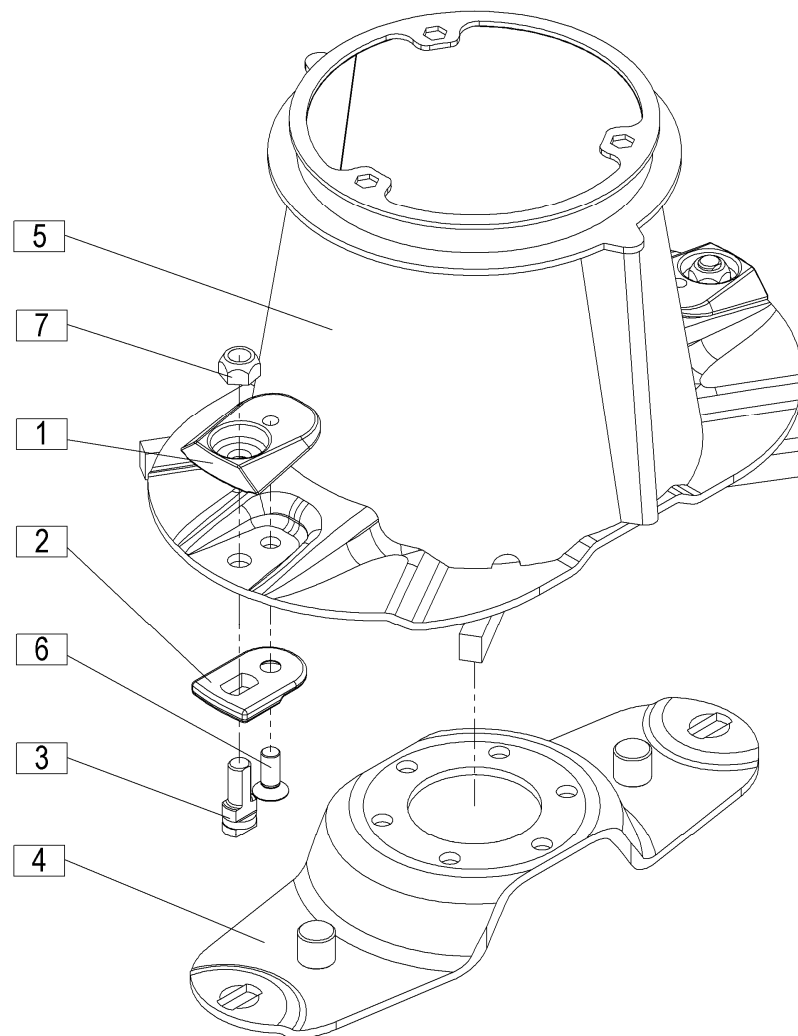
[illegible]



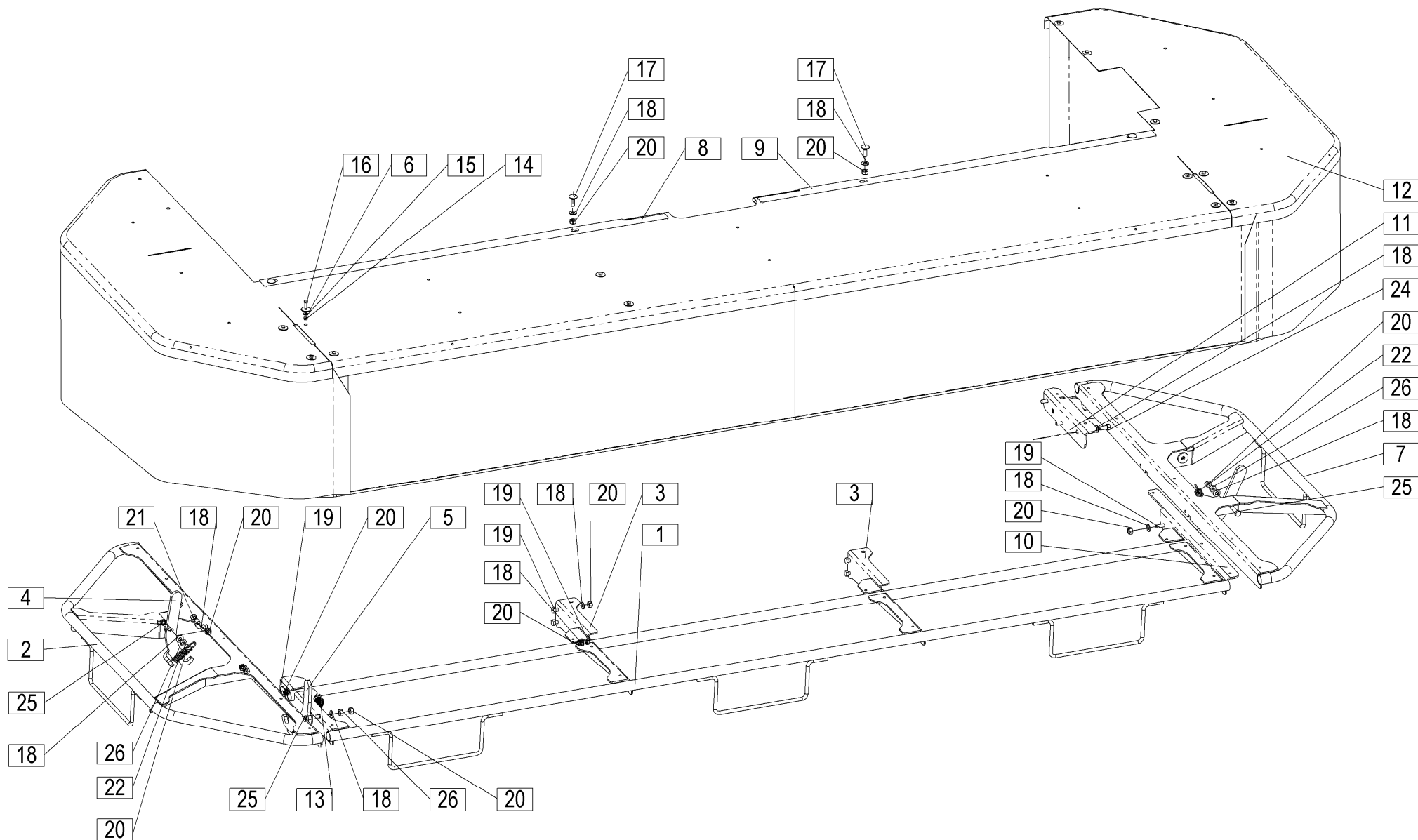
[illegible]



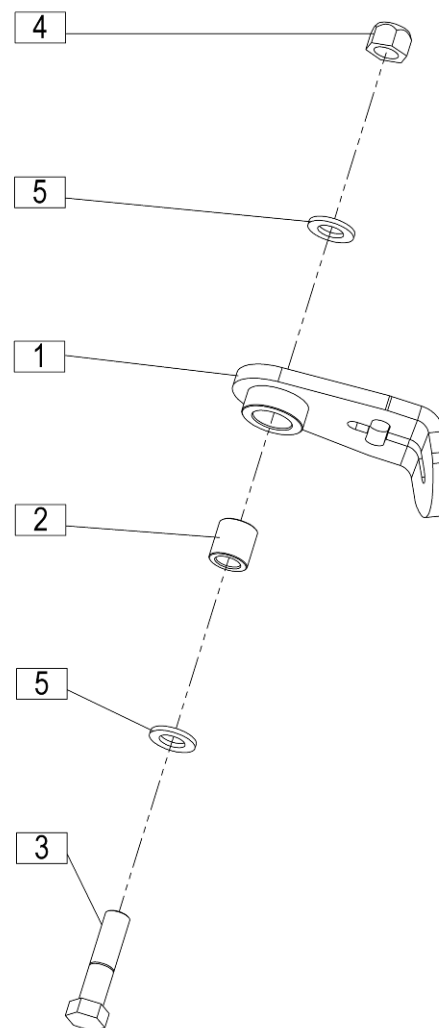
[illegible]



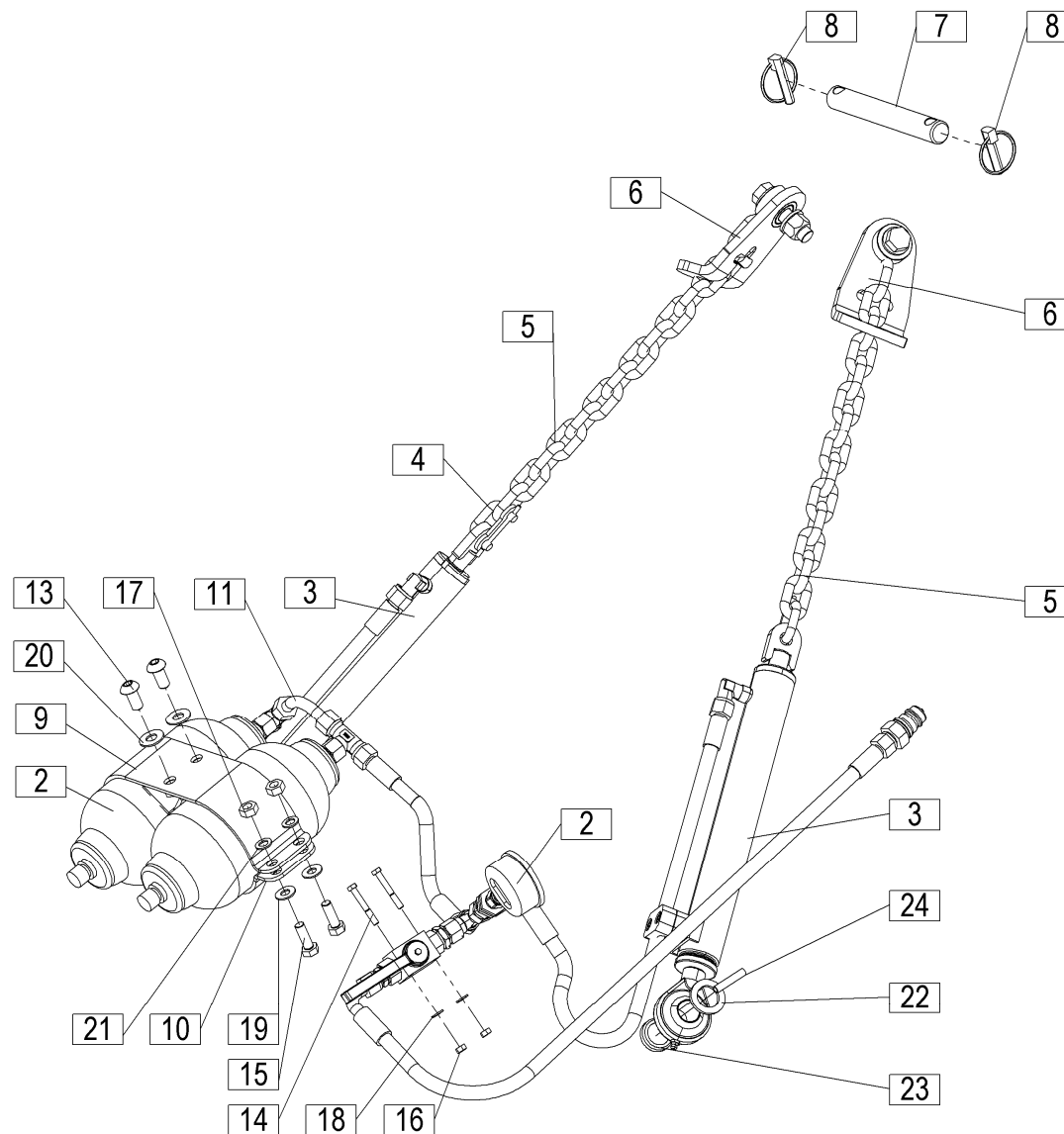
[illegible]



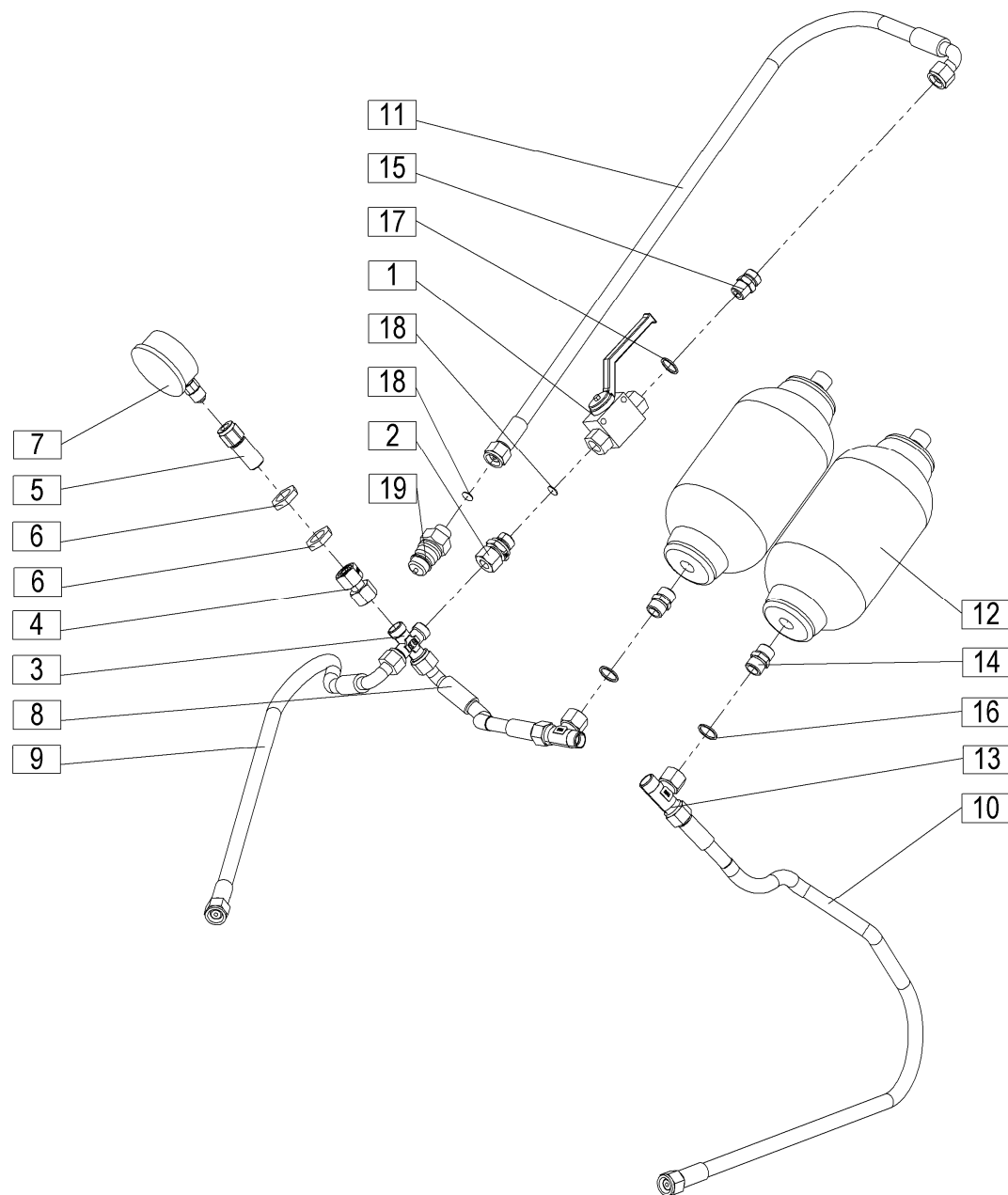
[illegible]



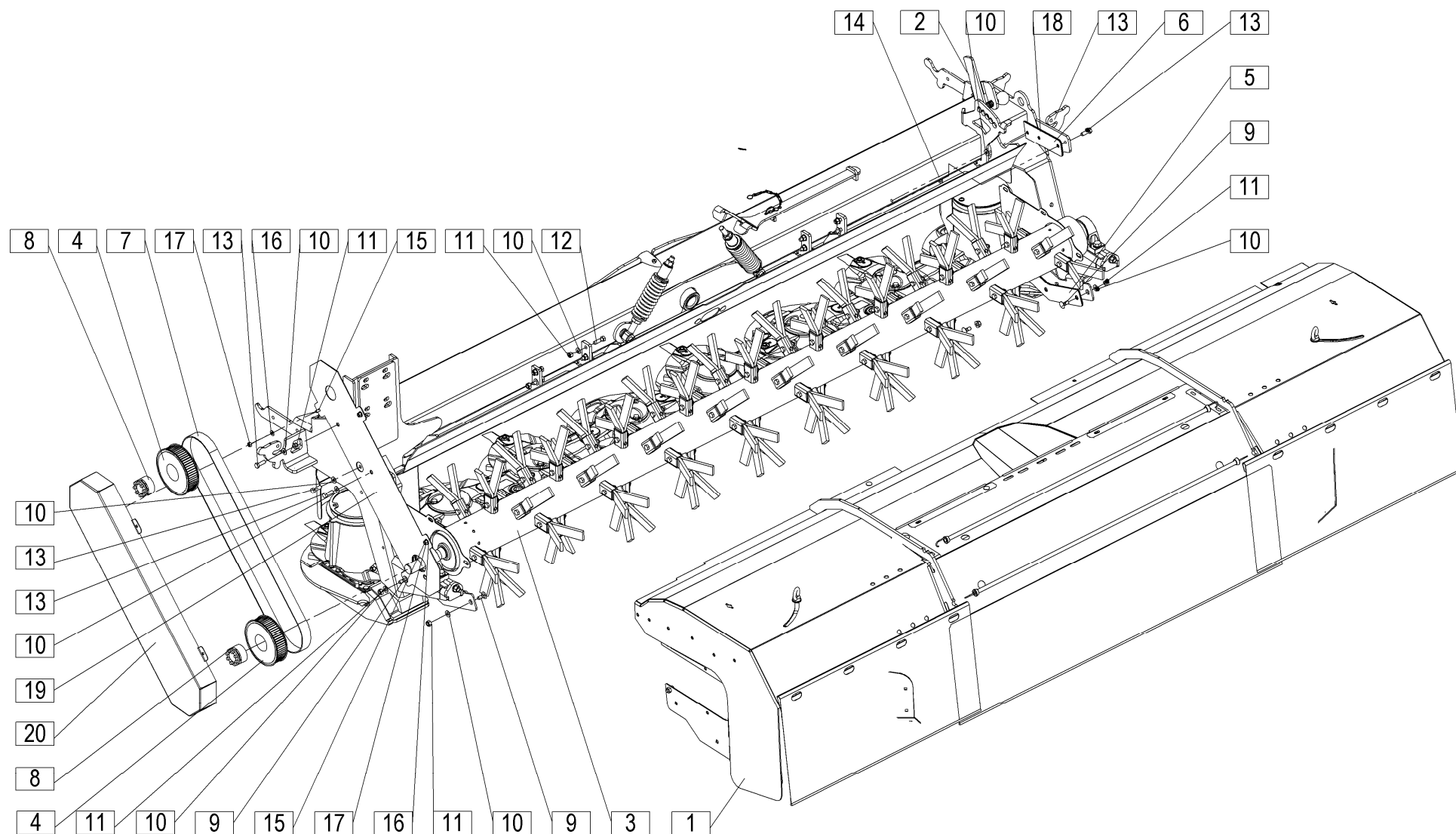
[illegible]



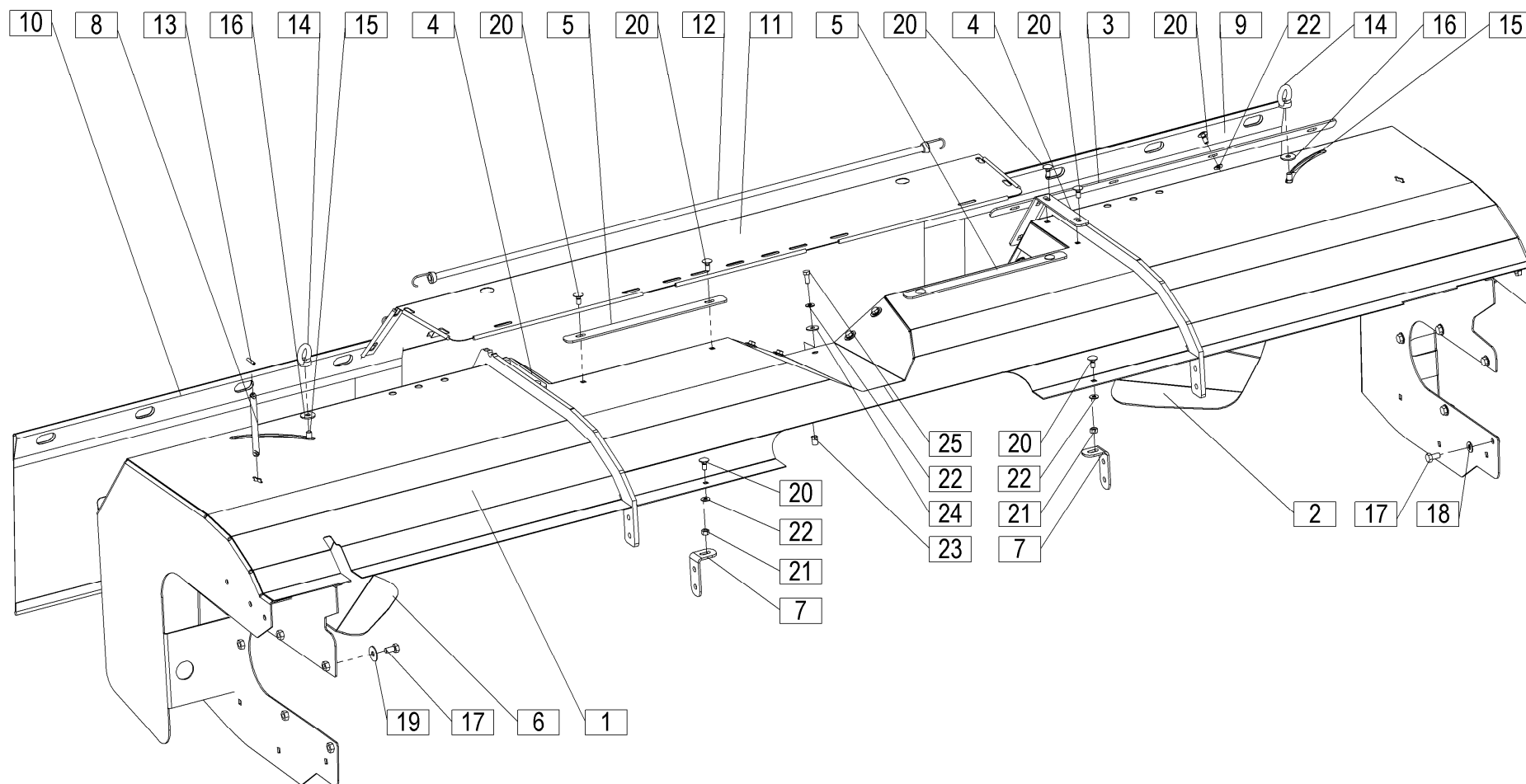
[illegible]



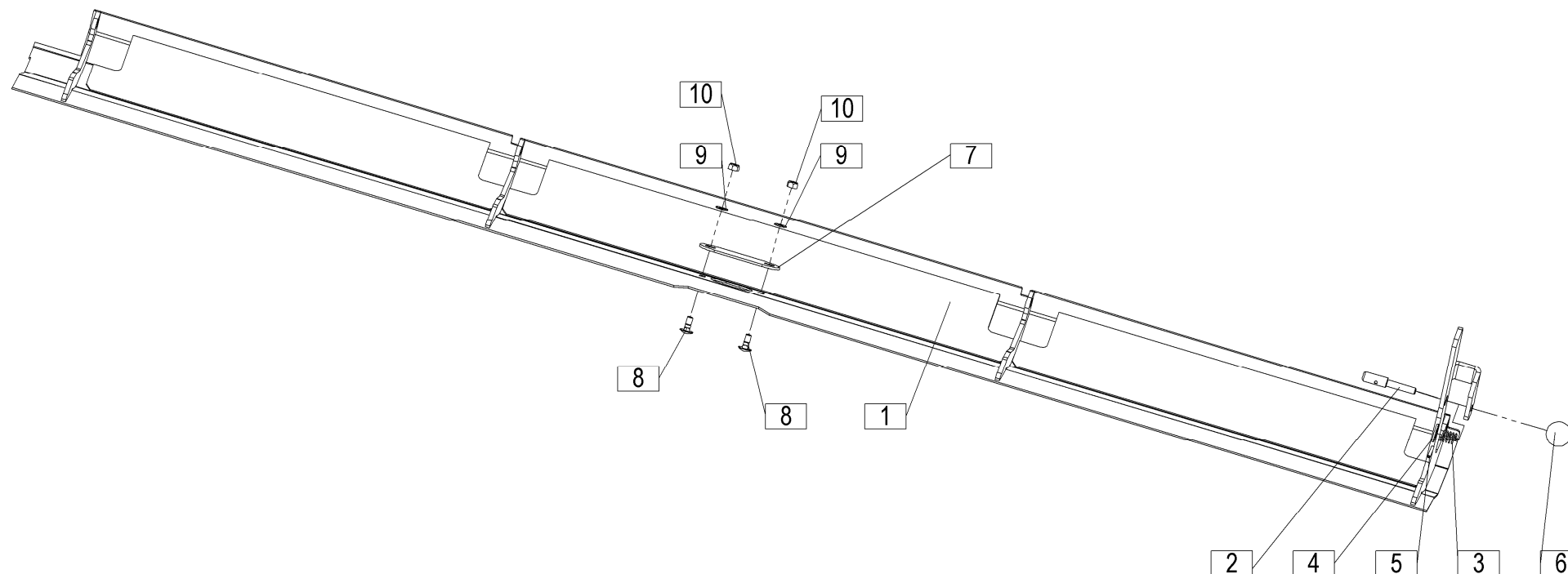
				Velja od tov. št. dalje: Važi od tvor. broja dalje: Ab masch. Nr.: From mach Nr.: Da macch. Nr.: N° de machine : Van mach nr.:				SILVERCUT 340F FC=+034		18	
Številka Broj Bild Fig. Fig. N° Afb.	Kataloška številka Kataloški broj Ersatzteilnummer Spare Part Number Numero Parti di Ricambio Numéro de la pièce de rechange Vervangonderdeelnnummer	Naziv dela (SLO)	Naziv dijela (HR)	Benennung (D)	Description (GB)	Descrizione (I)	Description (F)	Beschrijving (NL)	Količina Komada Menge Quantity Quantità Quantité Hoeveelheid		
1	150698702	Pipa zaporna DN 10 z izvrtinama Ø 6,5	Zatvorna pipa DN 10 sa rupom Ø 6,5	Hahn abschliessend DN 10 mit löchern Ø 6,5	Tap closing DN 10 with holes Ø 6,5	Chiusura rubinetto DN 10 con fori Ø 6,5	Fermeture robinet DN 10 avec trous Ø 6,5	Kraan sluit DN 10 met openingen Ø 6,5	1		
2	150698506	Priključek L12 x G3/8" / ISO 8434-1	Priključak L12 x G3/8" / ISO 8434-1	Anschluss L12 x G3/8" / ISO 8434-1	Connector L12 x G3/8" / ISO 8434-1	Connettore L12 x G3/8" / ISO 8434-1	Connecteur L12 x G3/8" / ISO 8434-1	Connector L12 x G3/8" / ISO 8434-1	1		
3	150698409	Priključek – križ L12 TELO / ISO 8434-1	Priključak – križ L12 TELO / ISO 8434-1	Querverbindung L12 TELO / ISO 8434-1	Cross connection L12 TELO / ISO 8434-1	Connessione a croce L12 TELO / ISO 8434-1	Interconnexion L12 TELO / ISO 8434-1	Kruisschakeling L12 TELO / ISO 8434-1	1		
4	150698604	Reducir – ravni L12 x L12 / ISO 8434-1	Reducir – ravni L12 x L12 / ISO 8434-1	Reduzierventil L12 x L12 / ISO 8434-1	Reducing valve L12 x L12 / ISO 8434-1	Valvola di riduzione L12 x L12 / ISO 8434-1	Soupape réductrice L12 x L12 / ISO 8434-1	Drukregelaar L12 x L12 / ISO 8434-1	1		
5	745061450	Reducir M18x1,5 - G 1/4	Reducir M18x1,5 - G 1/4	Reduzierstück M18x1,5 - G 1/4	Reduction piece M18x1,5 - G 1/4	Riduzione pezzo M18x1,5 - G 1/4	Réducteur M18x1,5 - G 1/4	Verkortingsstuk M18x1,5 G 1/4"	1		
6	150700307	Matica M18x1,5 (VOSS 0081062100)	Navrtka M18x1,5 (VOSS 0081062100)	Mutter M18x1,5 (VOSS 0081062100)	Nut M18x1,5 (VOSS 0081062100)	Dado M18x1,5 (VOSS 0081062100)	ÉcrouM18x1,5 (VOSS 0081062100)	Moer M18x1,5 (VOSS 0081062100)	2		
7	150514205	Manometer MGR 250 Art. L6450 / HABERKORN	Manometar MGR 250 Art. L6450 / HABERKORN	Druckmesser MGR 250 Art. L6450 / HABERKORN	Manometer MGR 250 Art. L6450 / HABERKORN	Manometro MGR 250 Art. L6450 / HABERKORN	Manomètre MGR 250 Art. L6450 / HABERKORN	Manometer MGR 250 Art. L6450 / HABERKORN	1		
8	150696606	Cev 1W DN8 285 A1 /45 M18x1,5 A1 M18x1,5	Cijev 1W DN8 285 A1 /45 M18x1,5 A1 M18x1,5	Rohr 1W DN8 285 A1 /45 M18x1,5 A1 M18x1,5	Tube 1W DN8 285 A1 /45 M18x1,5 A1 M18x1,5	Tubo 1W DN8 285 A1 /45 M18x1,5 A1 M18x1,5	Tuyau 1W DN8 285 A1 /45 M18x1,5 A1 M18x1,5	Buis 1W DN8 285 A1 /45 M18x1,5 A1 M18x1,5	1		
9	150696508	Cev 1W DN8 650 A1 /90 M18x1,5 A1 M18x1,5	Cijev 1W DN8 650 A1 /90 M18x1,5 A1 M18x1,5	Rohr 1W DN8 650 A1 /90 M18x1,5 A1 M18x1,5	Tube 1W DN8 650 A1 /90 M18x1,5 A1 M18x1,5	Tubo 1W DN8 650 A1 /90 M18x1,5 A1 M18x1,5	Tuyau 1W DN8 650 A1 /90 M18x1,5 A1 M18x1,5	Buis 1W DN8 650 A1 /90 M18x1,5 A1 M18x1,5	1		
10	150696401	Cev 1W DN 8 860 A1 M18x1,5 A1 M18x1,5	Cijev 1W DN 8 860 A1 M18x1,5 A1 M18x1,5	Rohr 1W DN 8 860 A1 M18x1,5 A1 M18x1,5	Tube 1W DN 8 860 A1 M18x1,5 A1 M18x1,5	Tubo 1W DN 8 860 A1 M18x1,5 A1 M18x1,5	Tuyau 1W DN 8 860 A1 M18x1,5 A1 M18x1,5	Buis 1W DN 8 860 A1 M18x1,5 A1 M18x1,5	1		
11	150698203	Cev 1SNDN8 1900 A1/90 M18x1,5 A1 M18x1,5	Cijev 1SNDN8 1900 A1/90 M18x1,5 A1 M18x1,5	Rohr 1SNDN8 1900 A1/90 M18x1,5 A1 M18x1,5	Tube 1SNDN8 1900 A1/90 M18x1,5 A1 M18x1,5	Tubo 1SNDN8 1900 A1/90 M18x1,5 A1 M18x1,5	Tuyau 1SNDN8 1900 A1/90 M18x1,5 A1 M18x1,5	Buis 1SNDN8 1900 A1/90 M18x1,5 A1 M18x1,5	1		
12	150536307	Akumulator h. htr 1,5 210 BAR (N2=115-120B)	Akumulator h. htr. 1,5 210 BAR (N2=115-120B)	Speicher 1,5 210 BAR (N2=115-120B)	Pressure reservoir 1,5 210 BAR (N2=115-120B)	Pressione del serbatoio 1,5 210 BAR (N2=115-120B)	Réservoir de pression 1,5 210 BAR (N2=115-120B)	Drukreservoir 1,5 210 BAR (N2=115-120B)	2		
13	150695901	Priključek SWBT L12 kpl. ISO 8434-1	Priključak SWBT L12 kpl. ISO 8434-1	Anschluss SWBT L12 zus. ISO 8434-1	Connector SWBT L12 cpl. ISO 8434-1	Connettore SWBT L12 cpl. ISO 8434-1	Connecteur SWBT L12 cpl. ISO 8434-1	Connector SWBT L12 cpl. ISO 8434-1	2		
14	150638705	Priključek S - L12xM18x1,5 TELO ISO 8434	Priključak S - L12xM18x1,5 TELO ISO 8434	Anschluss S - L12xM18x1,5 TELO ISO 8434	Connector S - L12xM18x1,5 TELO ISO 8434	Connettore S - L12xM18x1,5 TELO ISO 8434	Connecteur S - L12xM18x1,5 TELO ISO 8434	Connector S - L12xM18x1,5 TELO ISO 8434	2		
15	950005808	Priključek SDS-L12 x G3/8A TELO	Priključak SDS-L12 x G3/8A TELO	Anschluss SDS-L12 x G3/8A TELO	Connector SDS-L12 x G3/8A TELO	Connettore SDS-L12 x G3/8A TELO	Connecteur SDS-L12 x G3/8A TELO	Connector SDS-L12 x G3/8A TELO	1		
16	150040100	Podložka tesnilna A18x22	Zaptivna podložka A18x22	Dichtungsring A18x22	Gasket A18x22	Guarnizione A18x22	Joint d'étanchéité A18x22	Pakking A18x22	2		
17	150340606	Podložka tesnilna A17x21	Zaptivna podložka A17x21	Dichtungsring A17x21	Gasket A17x21	Guarnizione A17x21	Joint d'étanchéité A17x21	Pakking A17x21	1		
18	150657104	Spojka AMD M18x1,5	Spojnica AMD M18x1,5	Stecker AMD M18x1,5	Pin AMD M18x1,5	Perno AMD M18x1,5	Cheville AMD M18x1,5	Pin AMD M18x1,5	1		
19	745061140	Dušilka	Prigušivač	Choke	Drossel	Induttore	Bobine	choke	1		



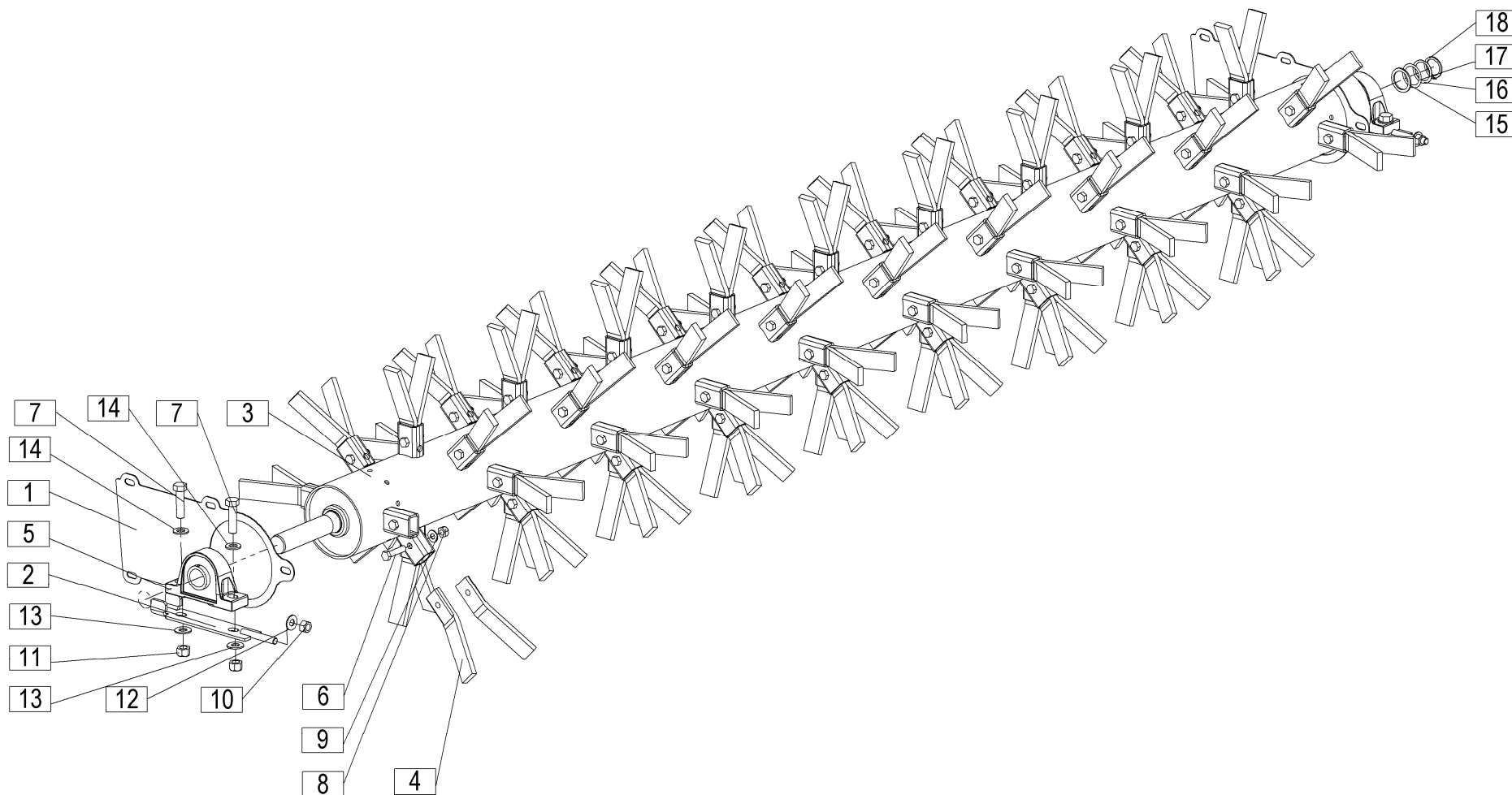
[illegible]



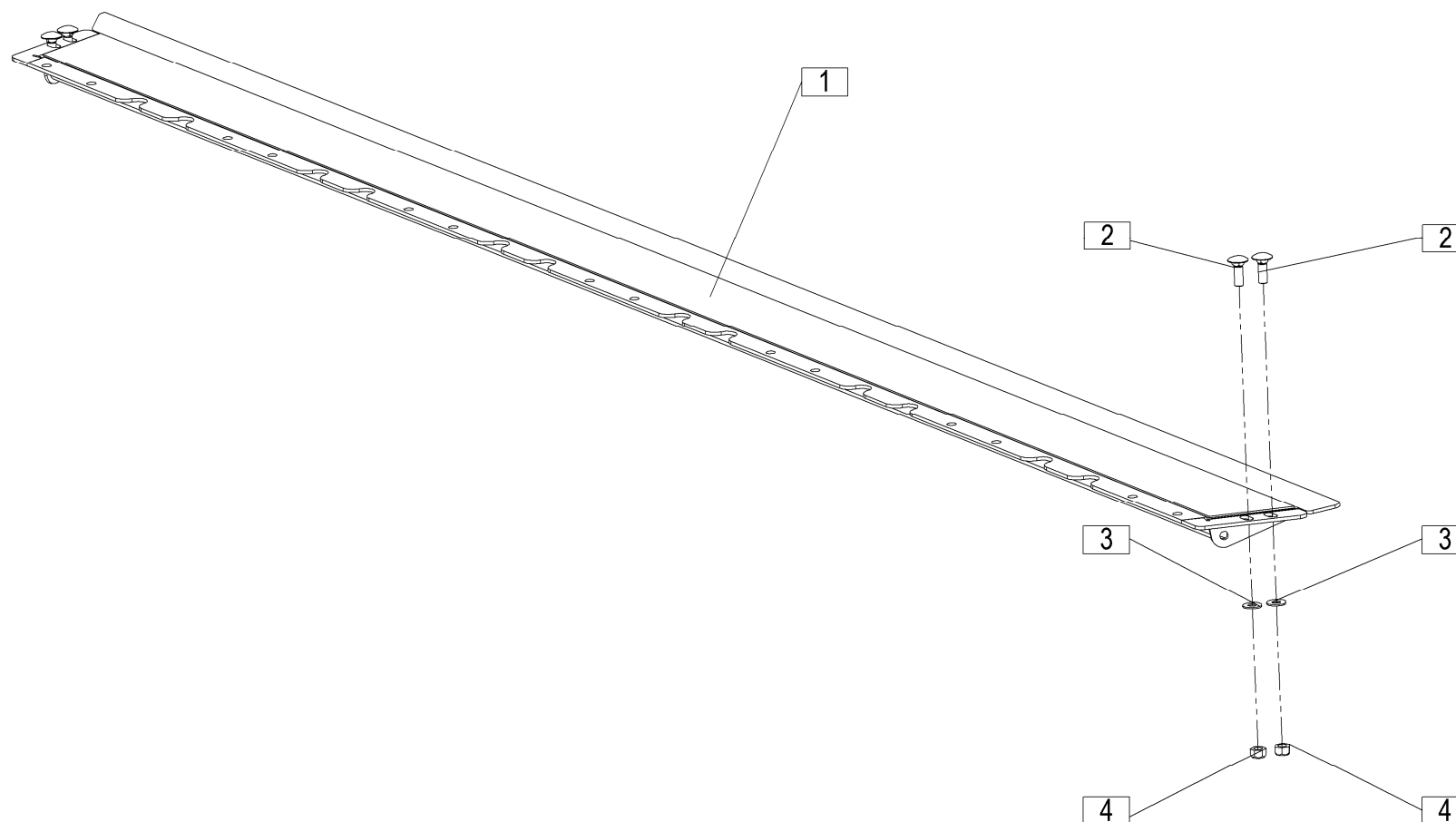
[illegible]



[illegible]



[illegible]



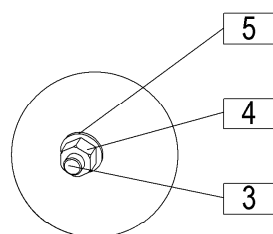
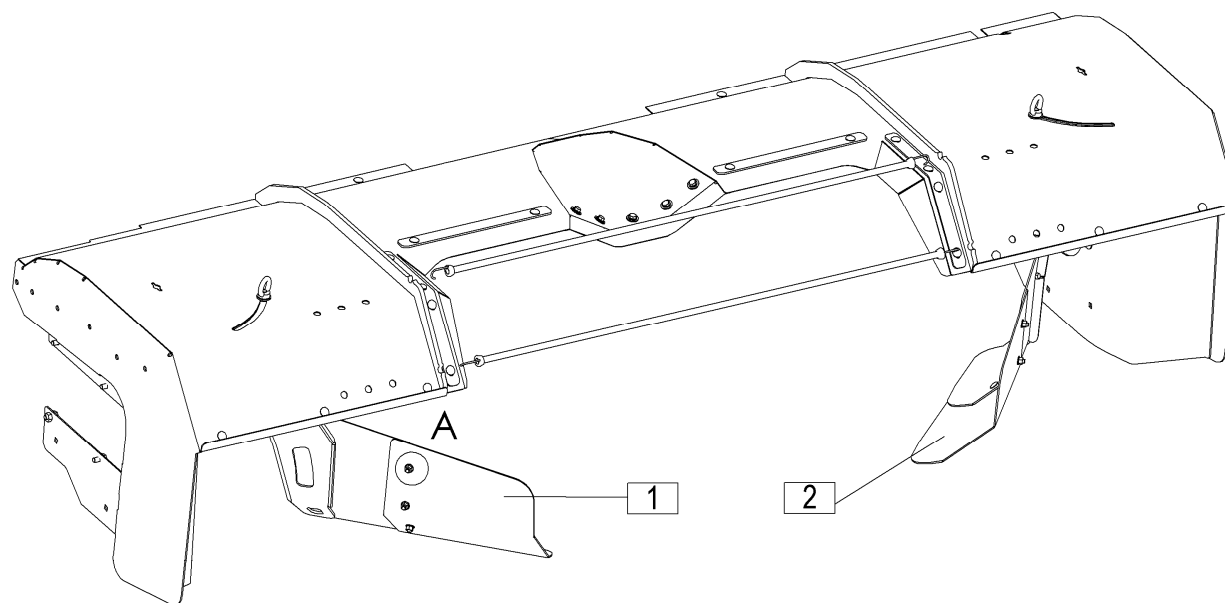
DODATNA OPREMA
SONDERAUSRÜSTUNG – ZUSATZTEILE
ADDITIONAL EQUIPMENT
ÉQUIPEMENT ADDITIONNEL
ATTREZZATURA AGGIUNTIVA
BIJKOMENDE UITRUSTING

Velja od tov. št. dalje: Važi od tvor. broja dalje: Ab mach. Nr.: From mach Nr.: Da mach. Nr.: N° de machine : Van mach nr.:	SILVERCUT 340F FC=+034
--	-------------------------------

SILVERCUT 340F FC=+034

23

[illegible]



DETAIL A
SCALE 1 : 2

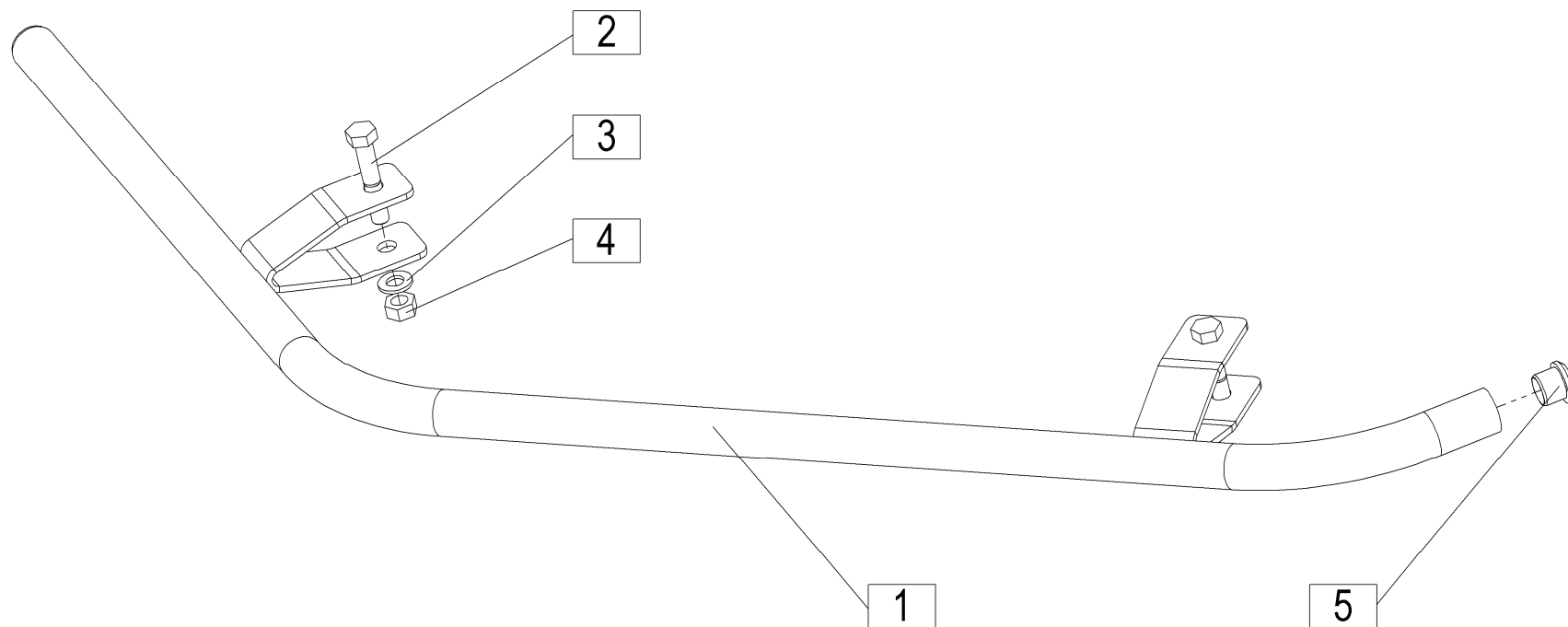
DODATNA OPREMA
SONDERAUSRÜSTUNG – ZUSATZTEILE
ADDITIONAL EQUIPMENT
ÉQUIPEMENT ADDITIONNEL
ATTREZZATURA AGGIUNTIVA
BIJKOMENDE UITRUSTING

Velja od tov. št. dalje: Važi od tvor. broja dalje: Ab mach. Nr.: From mach Nr.: Da mach. Nr.: N° de machine : Van mach nr.:	SILVERCUT 340F FC=+034
--	-------------------------------

SILVERCUT 340F FC=+034

24

[illegible]



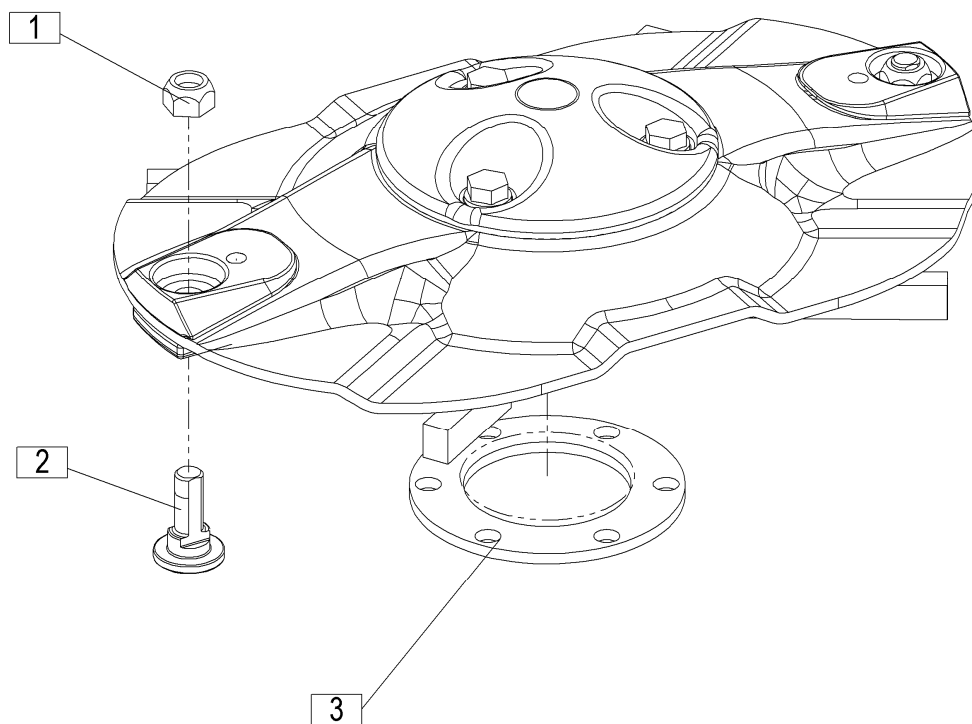
DODATNA OPREMA
SONDERAUSRÜSTUNG – ZUSATZTEILE
ADDITIONAL EQUIPMENT
ÉQUIPEMENT ADDITIONNEL
ATTREZZATURA AGGIUNTIVA
BIJKOMENDE UITRUSTING

SILVERCUT 340F FC=+034

SILVERCUT 340F FC=+034

25

[illegible]



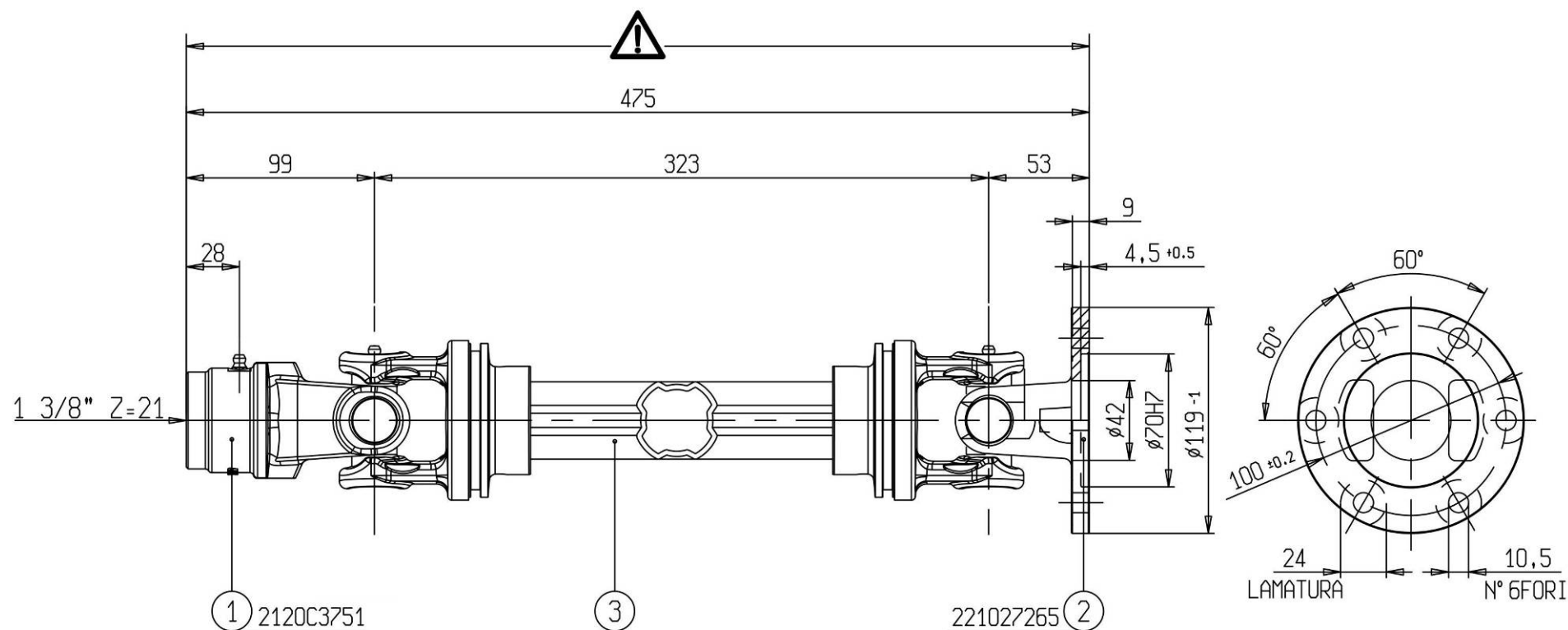
DODATNA OPREMA
SONDERAUSRÜSTUNG – ZUSATZTEILE
ADDITIONAL EQUIPMENT
ÉQUIPEMENT ADDITIONNEL
ATTREZZATURA AGGIUNTIVA
BIJKOMENDE UITRUSTING

Velja od tov. št. dalje:
 Važi od tvor. broja dalje:
 Ab masch. Nr.:
 From mach Nr.:
 Da macch. Nr.:
 N° de machine :
 Van mach nr.:

SILVERCUT 340F FC=+034

26

[illegible]



KARDAN.104.0
KARDAN.104.1

Ident: 150664007
Ident: 150699104

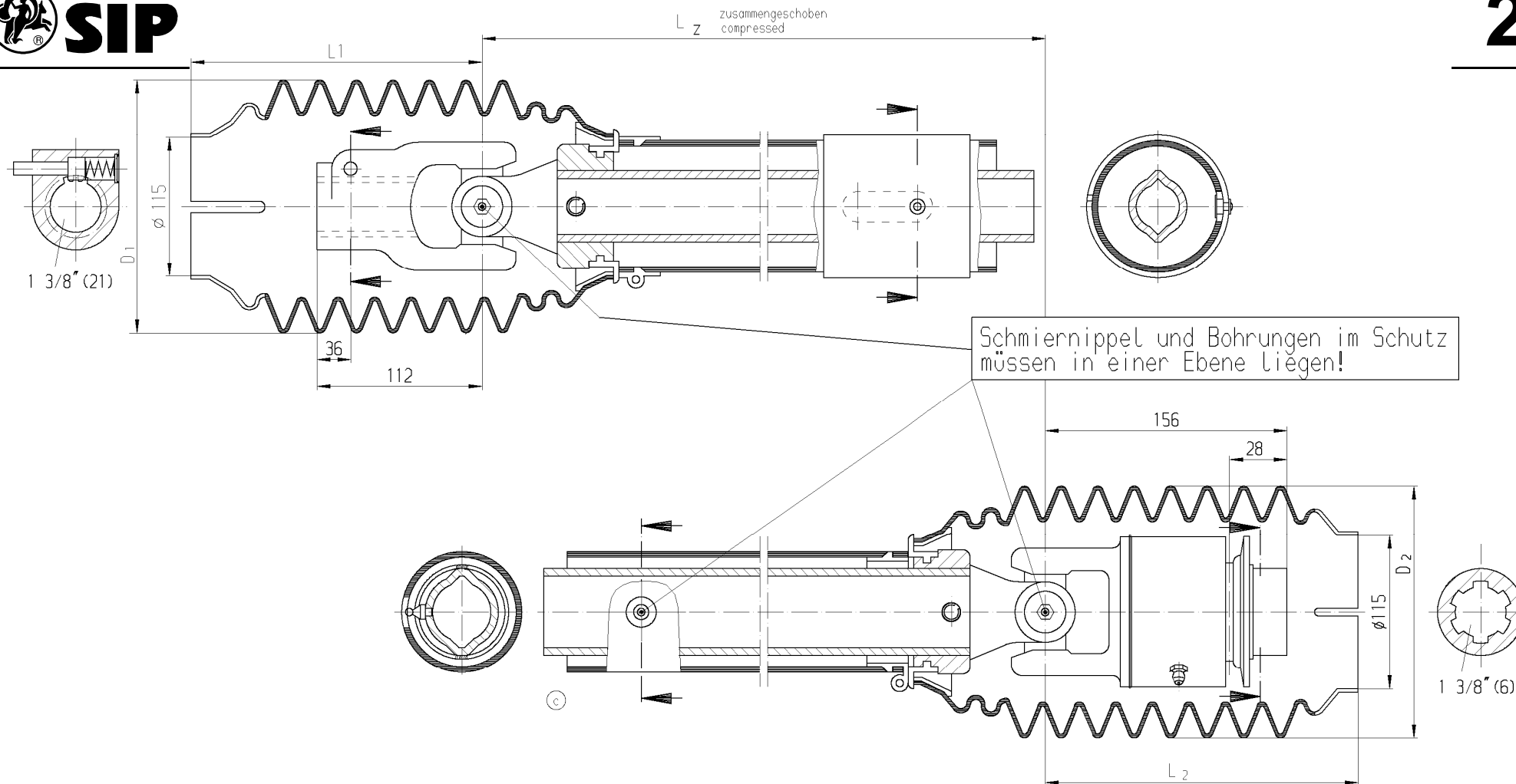
KARDAN.104.0
GELENKWELLE.104.0
P.T.O. SHAFT.104.0
ALBERO
CARDANICO.104.0

Ident: 150664007
L'arbre de
transmission
N. 104.0
P.T.O. AS.104.0

KARDAN.104.1
GELENKWELLE.104.1
P.T.O. SHAFT.104.1
ALBERO
CARDANICO.104.1

Ident: 150699104
L'arbre de
transmission
N. 104.1
P.T.O. AS.104.1

SILVERCUT 340F FC=+034



KARDAN.121.0
GELENKWELLE.121.0
P.T.O. SHAFT.121.0
ALBERO
CARDANICO.121.0

Ident: 150712900
L'arbre de
transmission
N. 121.0
P.T.O. AS.121.0

KARDAN.121.1
GELENKWELLE.121.1
P.T.O. SHAFT.121.1
ALBERO
CARDANICO.121.1

Ident: 150713507
L'arbre de
transmission
N. 121.1
P.T.O. AS.121.1

KARDAN.121.0
KARDAN.121.1

Ident: 150712900
Ident: 150713507

**SIP**

POGODBENI SERVISI

**SIP**

SLOVENIJA

SIP ŠEMPETER d.d. 3311 ŠEMPETER V SAVINJSKI DOLINI Tel: 03 70 38 500 Reklamacije: (0)3 70 38 562 Fax: 03 70 38 665	SMOLIČ JOŽE Artmanja vas 7, 8211 DOBRNIČ Tel: 07 34 65 600 Fax: 07 34 65 389 GSM: 041 693 221	KMETIJSTVO POLANEC d.o.o. Pleterje 34 2324 LOVRENC NA DRAVSKEM POLJU Tel: 02 761 9300 Fax: 02 761 9306
KMETIJSKI CENTER LAH Klanec 13 1218 KOMENDA Tel: 01 8341 022 Tel: 01 8342 070 Tel: 01 8342 080 Tel: 01 8342 212 Fax: 01 8345 505	RIKOTECH d.o.o. Lepovče 23, 1310 RIBNICA Tel. / fax.: 01 83 61 483 GSM: 041 72 43 98	AVTO CENTER ORMOŽ d.o.o. Hardek 44/c, 2270 ORMOŽ Fax: 02 7416 410 Tel: 02 74 16 405 (servis) GSM: 031 322 939 Tel: 02 74 16 407 (trgovina) GSM: 031 891 529
CREINA KRANJ Vodnova 8, 4000 KRANJ Tel: 04 20 13 360 (centrala) Tel: 04 20 13 355 (servis) Fax: 04 20 13 363	KZ KRKA z.o.o. OC AGROSERVIS Novo Mesto Knafelčeva 2 8000 NOVO MESTO Tel: 07 393 01 11 Fax: 07 393 01 25 Tel: 07 393 01 10	ŽIBRAT JANI Mota 32, 9240 LJUTOMER Tel: 02 584 1130 Fax: 02 584 1130 GSM: 041 713 300
AVTO ERŽEN d.o.o. Podjelovo Brdo 1, 4225 SOVODENJ Tel: 04 510 80 70 Fax: 04 510 80 77 GSM: 041 721 706	JAKŠE SAMO Prvomajska c. 22 8310 ŠENTJERNEJ Fax / Tel: 07 3081 309	FRANC ŠTAMUL s.p. Vuhred 125 2365 VUHRED Fax / Tel: 02 88 73 751 GSM: 041 332 684
	TOMC MARJAN Primostek 6 8332 GRADAC Tel: 07 30 58 513 GSM: 041 685 133	

HRVAŠKA

MF SERVIS Filipčič Milorad Gradec 9, 10345 GRADEC Tel: ++385 01 897 058 GSM: 098 248 267	PROIZVODNA OPRUGA DEŽANOVAC DEŽANOVAC Tel: ++385 43 381 333 Tel: ++385 43 381 366 (trgovina) Fax: ++385 43 381 330	AGM PANEX ČAKOVEC Zagrebačka 101, 40300 ČAKOVEC Tel: ++385 40 384 144 Tel: ++385 40 384 354 Tel: ++385 40 384 351 (servis) Fax: ++385 40 384 355
BOŽIČ VLADO Brače Radiča 50 42232 MARTIJANEC Tel: ++385 42 673 020 GSM: 099 420 927	ALKAR d.o.o. Dubrovačka 67, 34000 POŽEGA Tel: ++385 34 274 671 Fax: ++385 34 273 433 GSM: 098 362 996 GSM: 098 365 211	ALSO d.o.o. Končanica 355 43505 KONČANICA Tel: ++385 43 325 124 GSM: 091 56 13 600

BOSNA IN HERCEGOVINA

P.P. MABI Mrkodol h.h. 80240 TOMISLAVGRAD Tel: ++387 34 310 100	AGROCOOP KOBATOVCI 78255 BOSANSKI ALEKSANDROVAC Tel: ++387 51 582 041 (servis) GSM: ++387 65 510 290, Fax: ++387 51 580 800	ACMA d.o.o. Ljusina b.b. 77244 BOS. OTOKA Tel: ++387 37 477 018 Fax: ++387 37 477 039 GSM: ++387 61 155 905
---	---	---

SRBIJA IN ČRNA GORA

AGRO DRINIA 38400 PRIZREN KOSOVO Tel / Fax: ++381 29 44 335 GSM: ++377 44 113 137	JUGOMETAL d.o.o. Kušljevački put b.b., 35210 SVILAJNAC Tel: ++381 35 312 391 Tel: ++381 35 312 027 Tel: ++381 35 311 696, Fax: ++381 35 312 331	AGROAUTO PODGORICA Ul. Bracana Bracanovića 76 81412 SPUŽ Tel: ++381 81 881 784 Fax: ++381 81 636 290
--	--	---

MAKEDONIJA

	EURO POLOG 1226 Zheline, TETOVO Tel: ++389 44 379 379, Fax: ++389 44 378 236	
--	---	--

SIP d.d. Šempeter si pridržuje pravico do morebitnih sprememb v katalogu