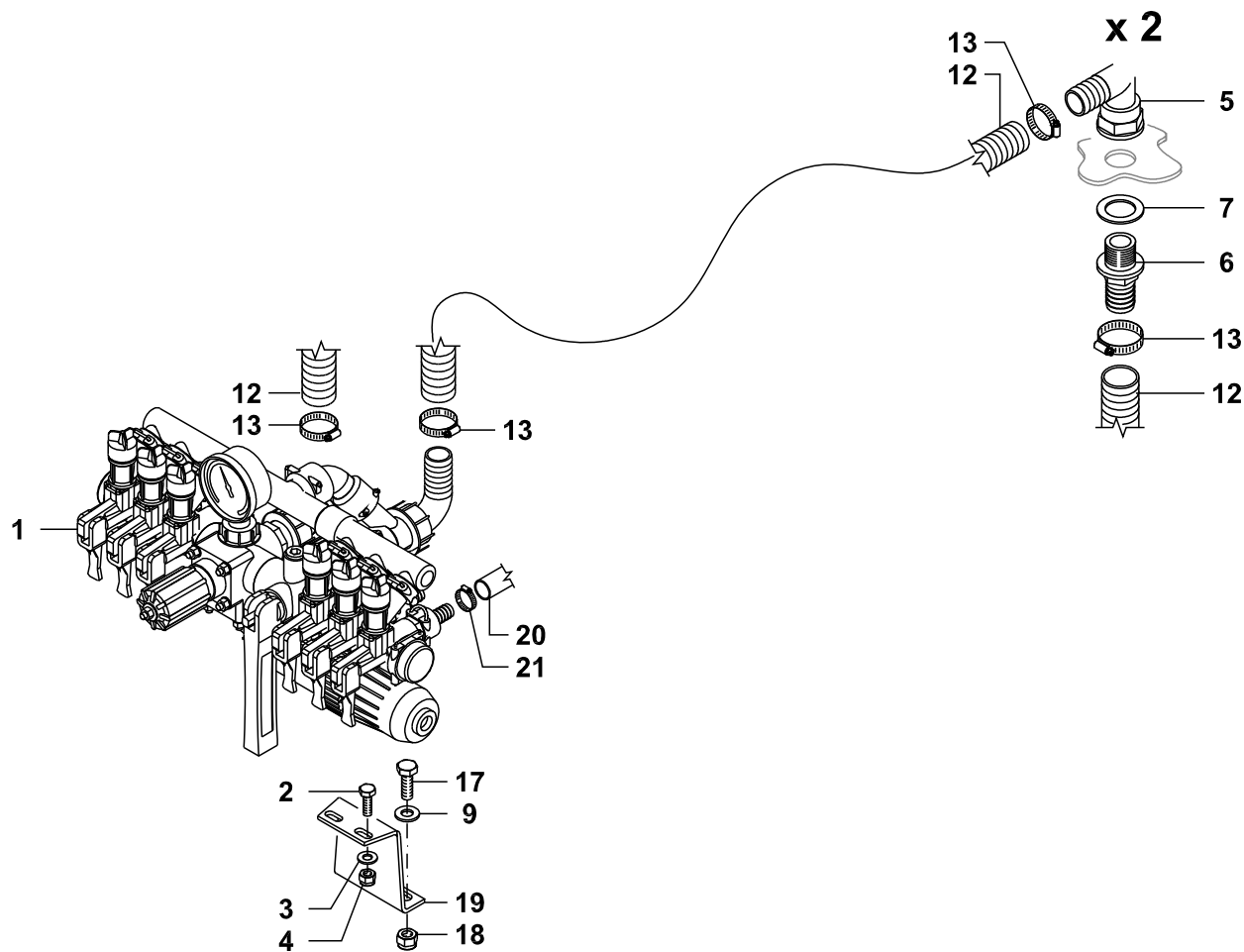
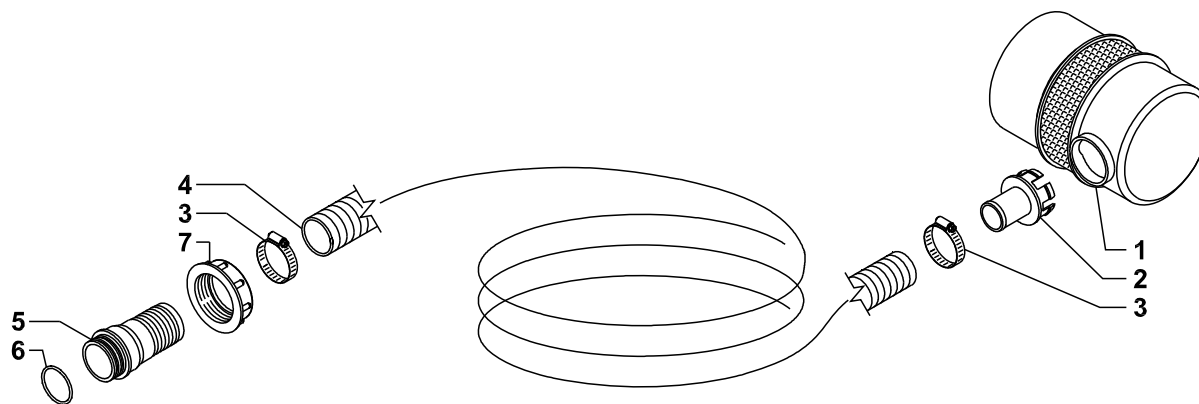


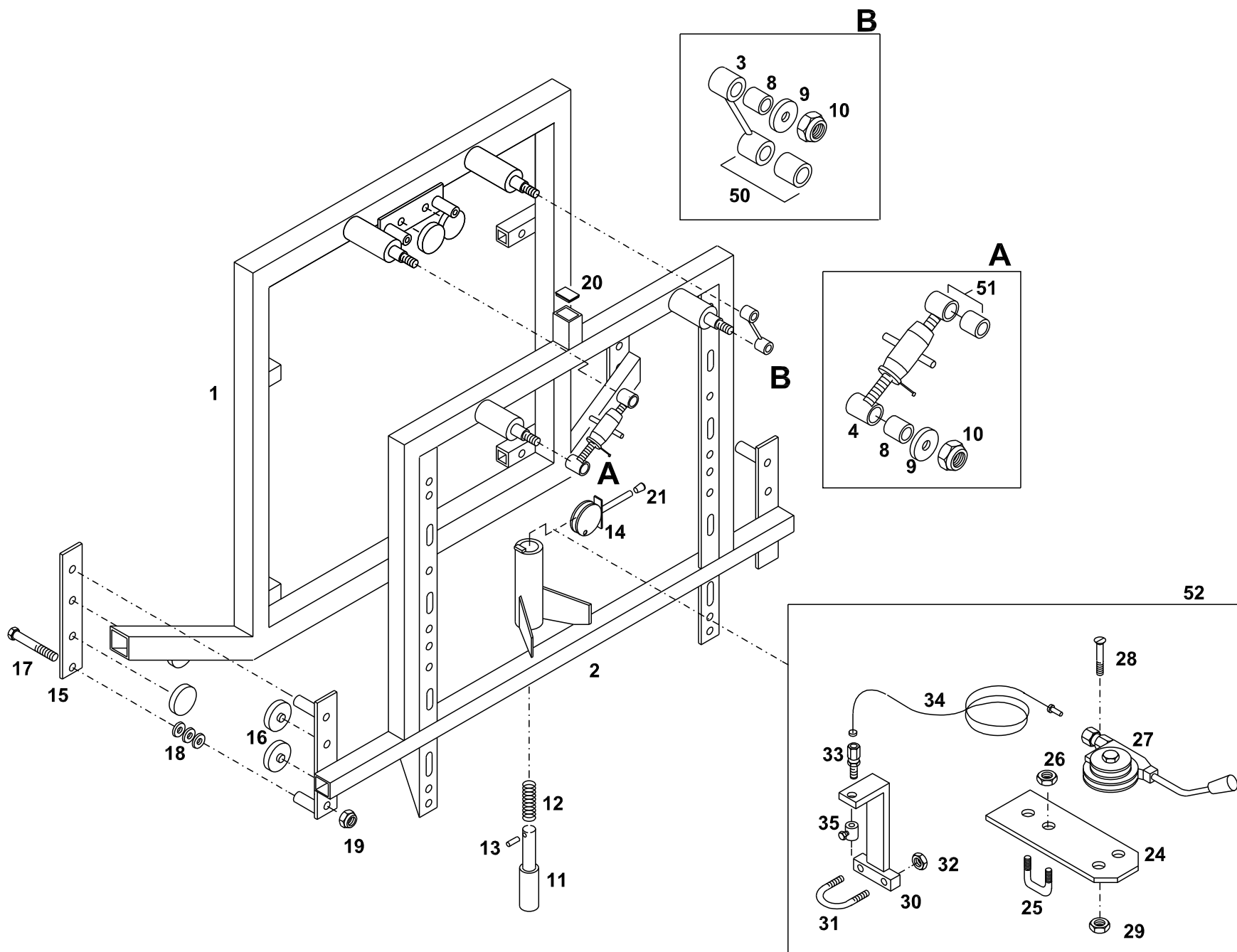
1	BG001438	
2	GG500100020Z	
3	GG919800004Z	
4	GG610420209	200l.
4	GG610420309	300l.
4	GG610420409	400l.
5	GGA00300120	
6	GG610420015	
7	GG630100020	
8	GG680000017	
9	GGA00504105	
10	GGA00G40005	
11	BG009758	
12	GGA00116530	
13	GGA00G10051	
14	GGA002002050	
15	GG563080000	D.30mm
16	GG919725035X	
17	GGA00106630	
18	GGA00G10061	
19	GGA002002060	
20	BG026300	1"1/2
21	BG027286	50 Mesh
22	GG907008017Z	
23	GG900108016Z	
24	GGA00116630	
25	GGA00502010	
29	GG999900035	
30	GG561301000	
31	GG919711020X	
32	GGA00220040	
33	GGA00G40004	
34	GGA002102040	
35	GGA00G40014	
36	GGA002052040	
37	GGA00356040	
38	A- 356040.020NB	
39	GGA350440.020	
40	GG919848035	



1	GGAR1357/01	4 vie
1	GGAR1359/01	6 vie
2	GG900108025Z	
3	GG907008017Z	
4	GG905400008	
5	BG019109	
6	BG013227	
7	GGA00G40003	
12	GG562580000	
13	GG919725035X	
15	GG562592000	
16	GG501100022V	
17	GG900110030Z	
18	GG905400010	
19	GG907010021Z	
20	GG561301000	
21	GG919711020X	



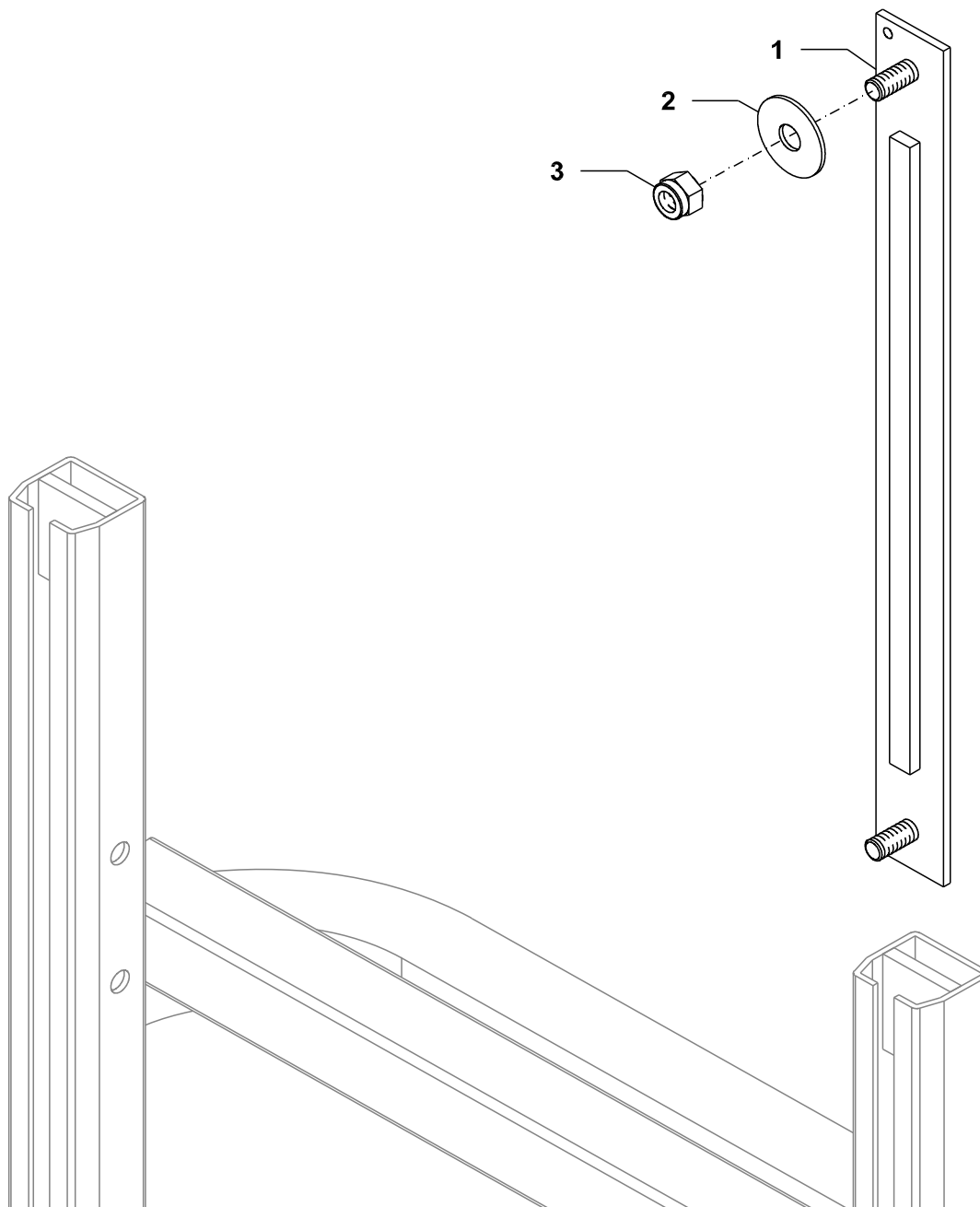
1	GGG008062003	
2	GGG00R00022	
3	GG919727051X	
4	GG564080000	
5	GGA00106640	1"1/2
5	GGA00106740	2"
6	GGA00G10061	1"1/2
6	GGA00G10071	2"
7	GGA002002060	1"1/2
7	GGA002002070	2"
09 04 02 01 00		



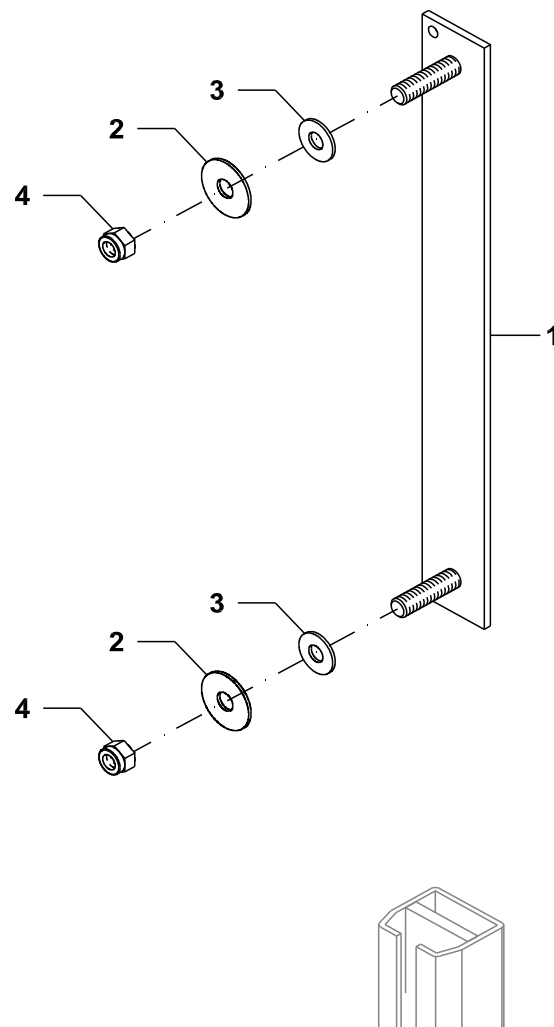
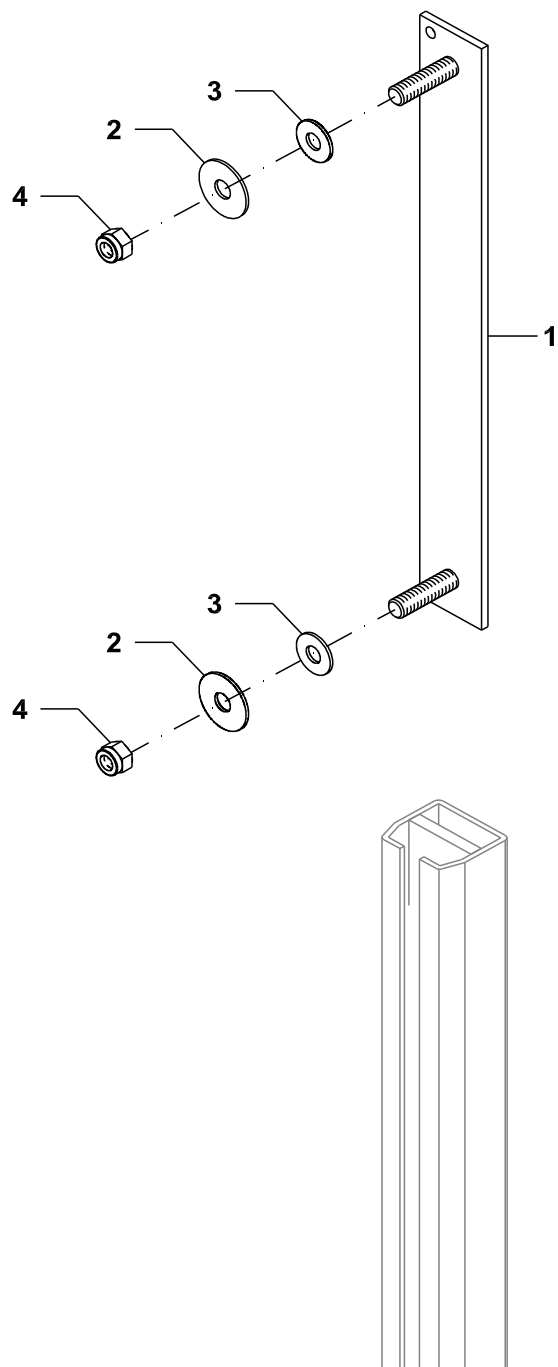
MEC SPECIAL

1	GG380100002V
2	GG380100021V
3	GG380100015Z
4	GG380100033Z
8	GG950300001
9	GG907112036Z
10	GG905400012
11	GG380100046Z
12	GG919900006Z
13	GG919800015
14	GG380100041Z
15	GG380100007Z
16	GG950200020
17	GG900312085Z
18	GG911225915
19	GG905400012
20	GG950140040
21	GG950101010
24	GG380500047V
25	GG500500002Z
26	GG905300010
27	GG920100015
28	GG900708020Z
29	GG905400008
30	GG380500048Z
31	GG500500030Z
32	GG905300006
33	GG919800045
34	GG500700116
35	GG919800046
50	GG993801001Z
51	GG993801002Z
52	GG993805001

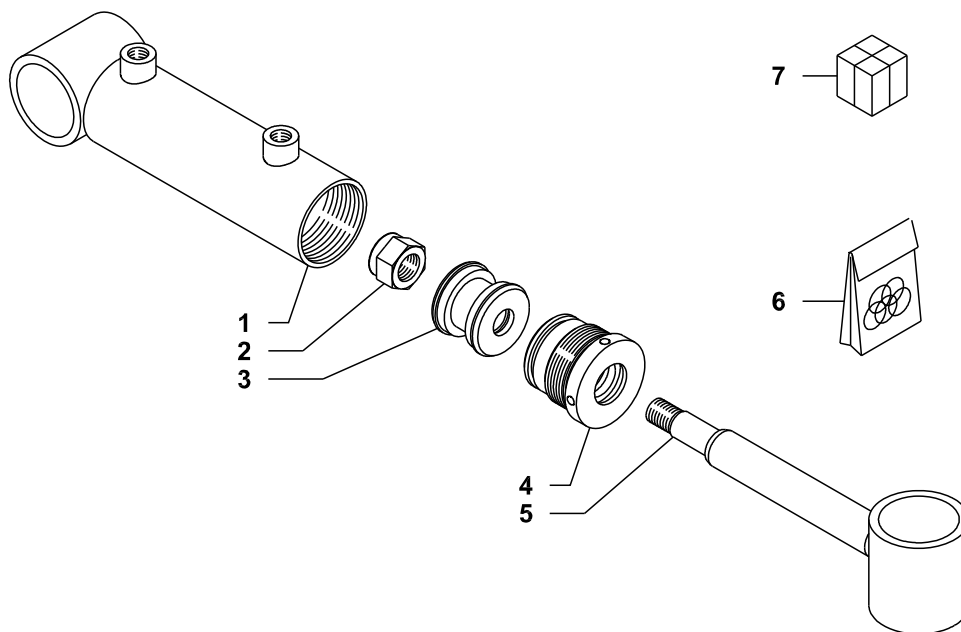
15 01 01 01 00



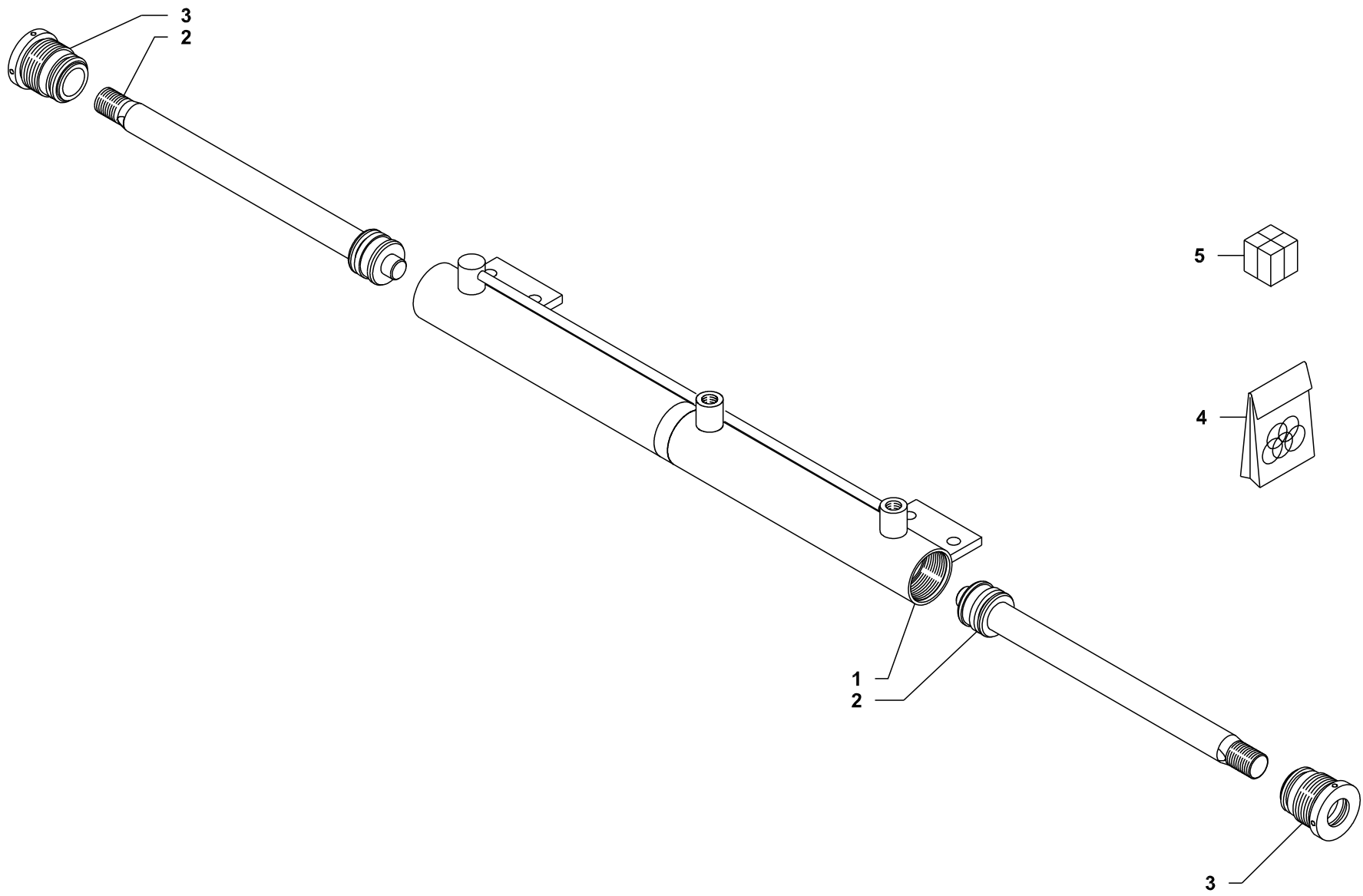
1	GG350200021V	
2	GG500400023	
3	GG905400010	



- | | |
|---|--------------|
| 1 | BG012567 |
| 2 | GG907111030Z |
| 3 | GG500400023 |
| 4 | GG905300010 |

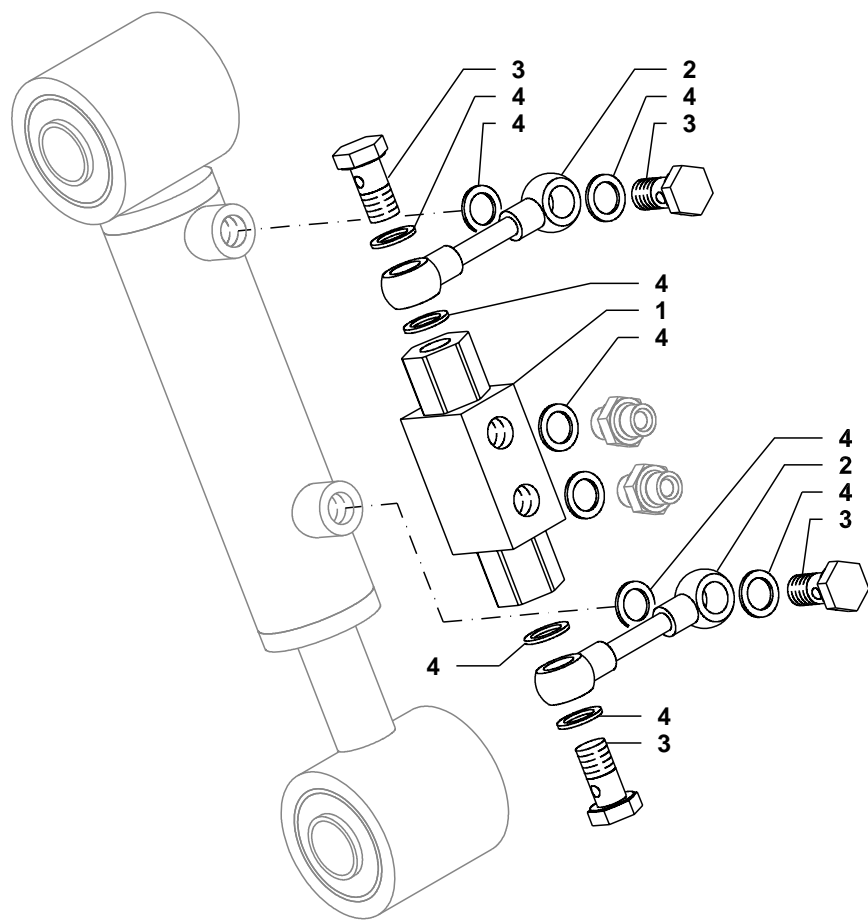


1	GG700032003
2	GG905415012
3	GG701632602
4	GG701632401
5	GG701600003
6	GG996000203
7	GG701632002V

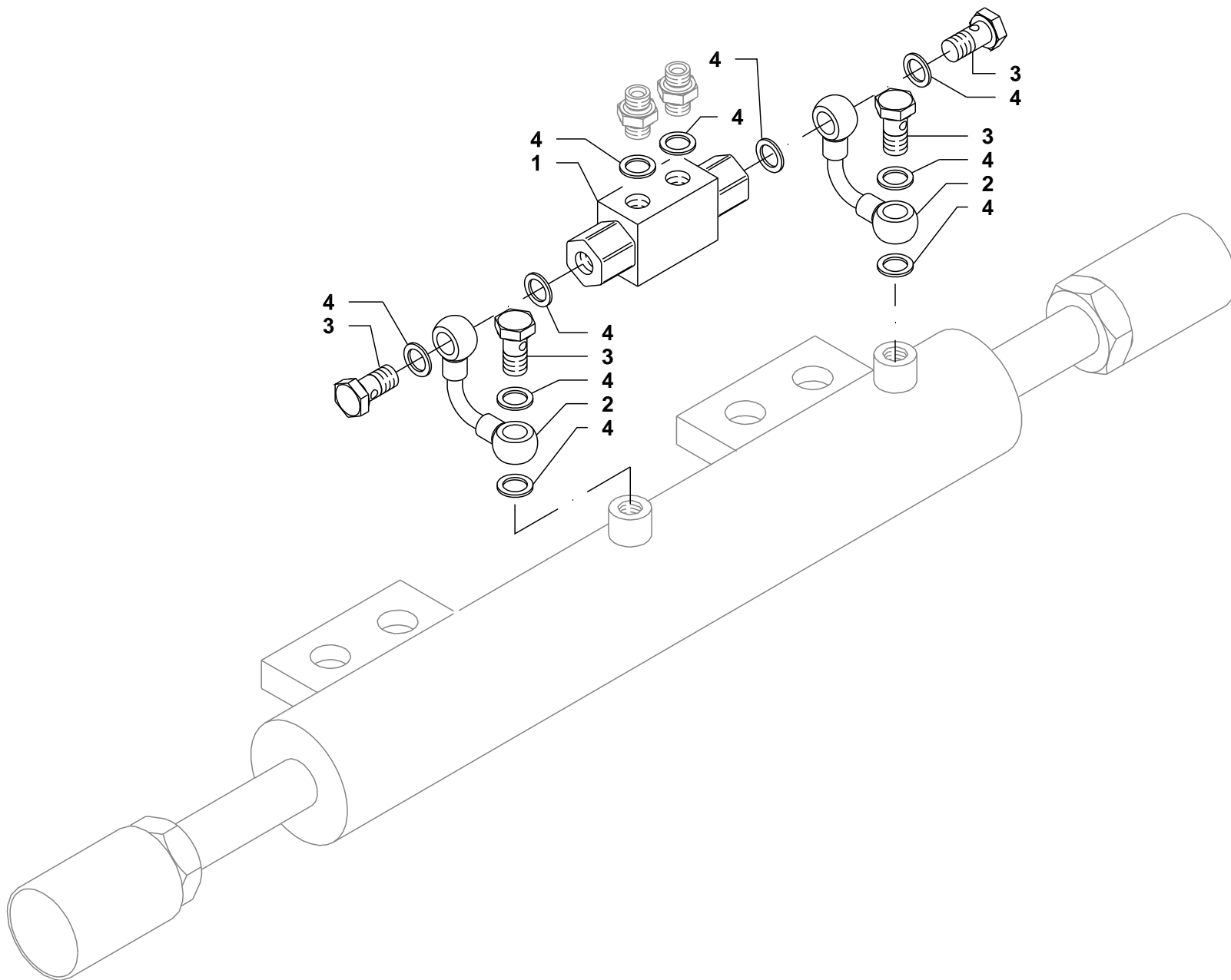


1	GG700040011	
2	GG702500032	
3	GG702540405	
4	GG996000178	
5	GG702540011V	

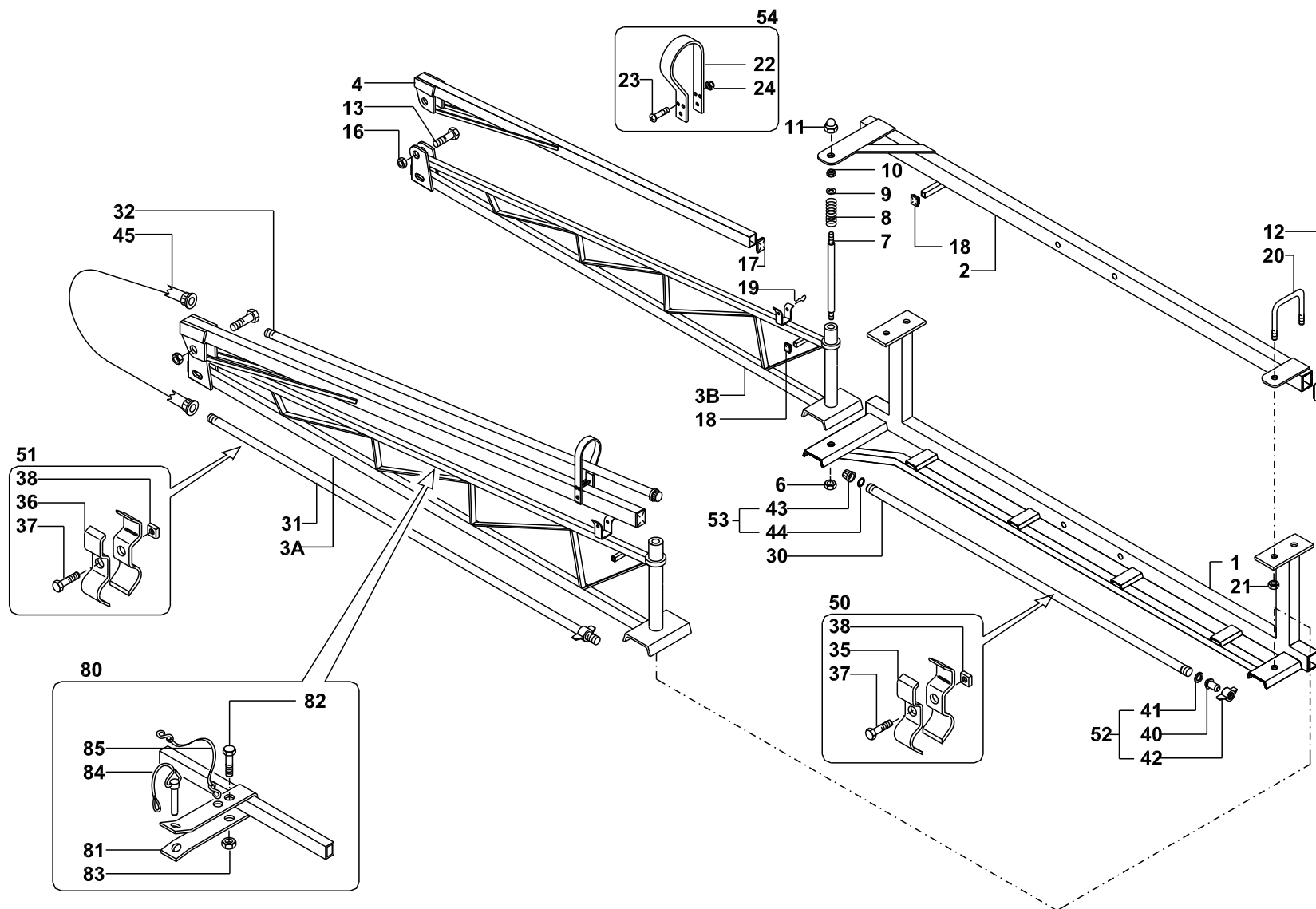
15 98	10 01	00
-------	-------	----



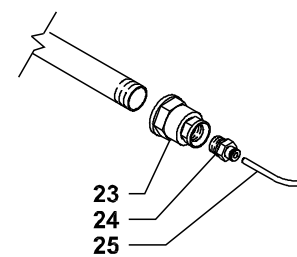
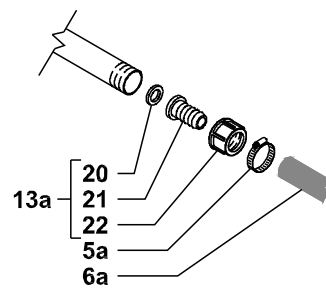
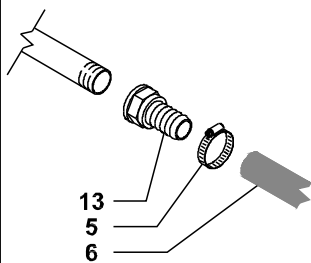
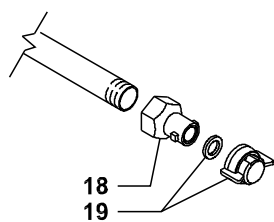
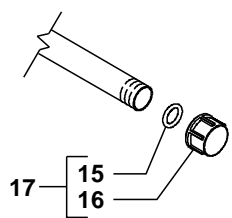
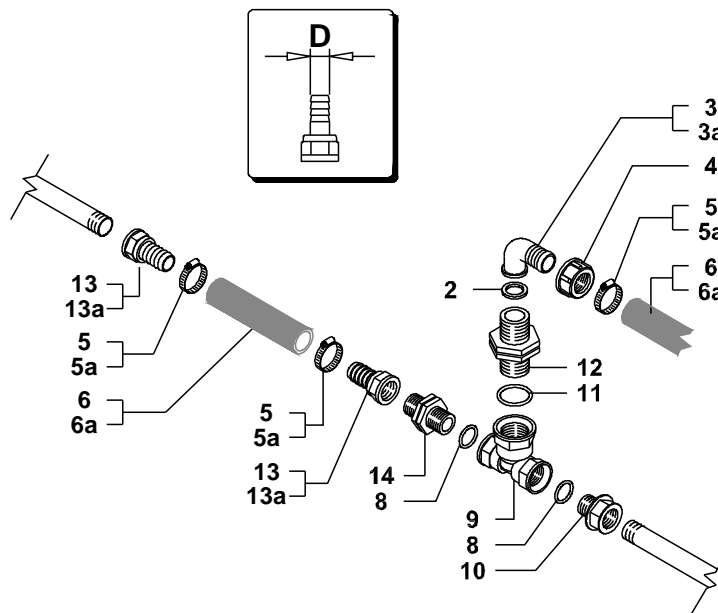
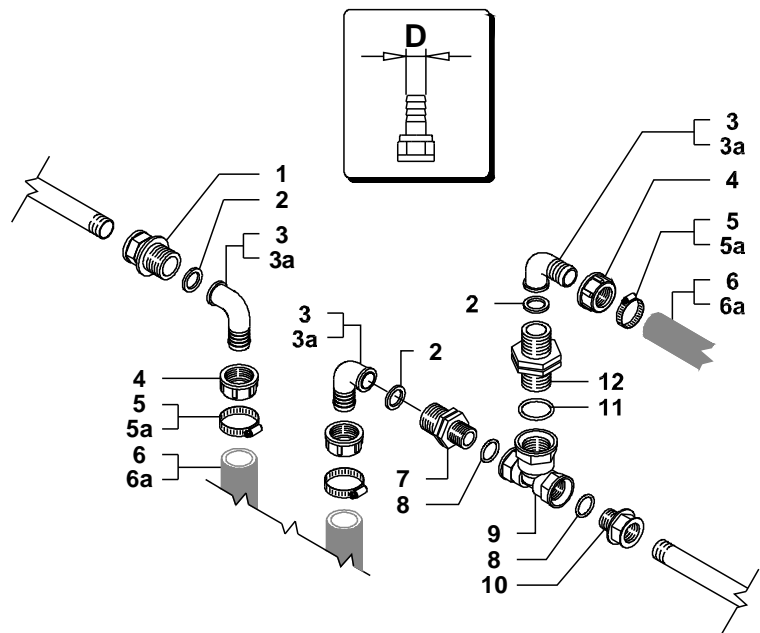
- | | |
|---|--------------|
| 1 | GG750300001 |
| 2 | GG750300024Z |
| 3 | GG570100031Z |
| 4 | BB50243113 |



- | | |
|---|--------------|
| 1 | GG750300001 |
| 2 | GG750300023Z |
| 3 | GG570100031Z |
| 4 | BB50243113 |



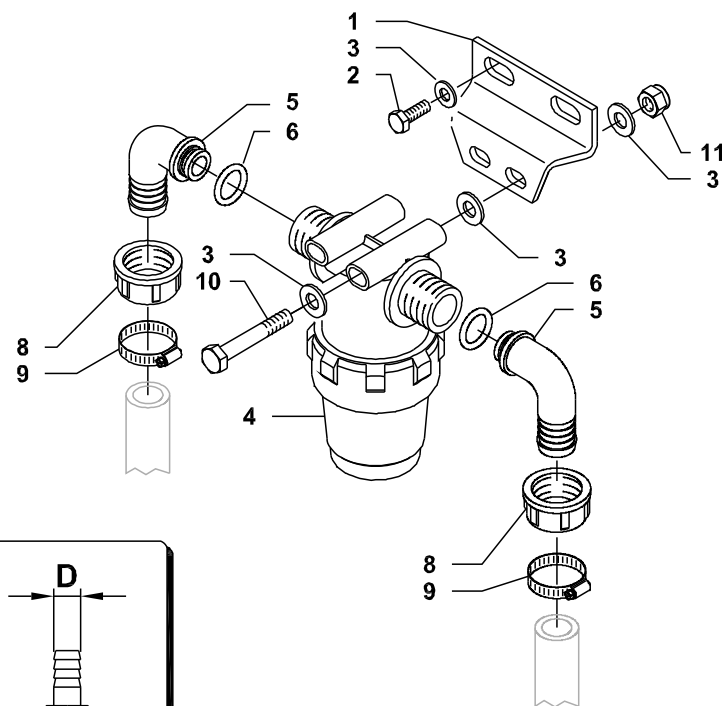
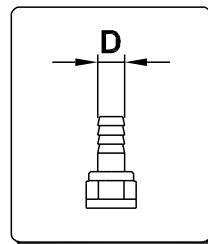
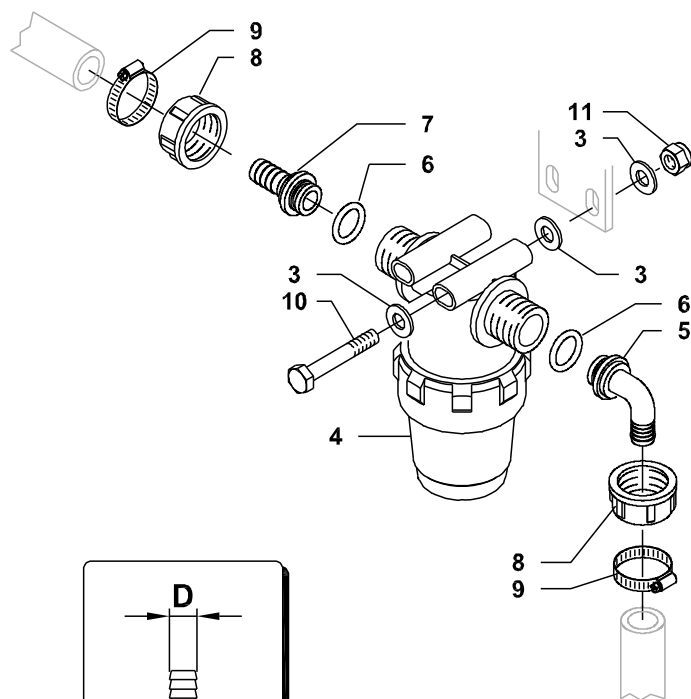
1	GG121200010Z	destro sinistro
2	GG121200002Z	
3a	GG121200017Z	destro sinistro
3b	GG121200018Z	
4	GG111200035Z	destro sinistro
6	GG905400018	
7	GG500100002Z	destro sinistro
8	GG919900003Z	
9	GG500400002Z	destro sinistro
10	GG905400022	
11	GG905300016	destro sinistro
12	GG950150050	
13	GG900310055Z	destro sinistro
16	GG905400010	
17	GG950130030	destro sinistro
18	GG950120020	
19	GG919800001Z	destro sinistro
20	GG500500002Z	
21	GG905300010	destro sinistro
22	GG121200008Z	
23	GG904906045Z	destro sinistro
24	GG905300006	
30	GG550400500	destro sinistro
31	GG550500500	
32	GG550500500	destro sinistro
35	GG500600001Z	
36	GG500600002Z	destro sinistro
37	GG900508020Z	
38	GG906000008Z	destro sinistro
40	GGA00105213	
41	GGA00G40012	destro sinistro
42	GGA00200021	
43	GGA00210020	destro sinistro
44	GGA00G10020	
45	GG561399067	destro sinistro
50	GG999900002Z	
51	GG999900004Z	destro sinistro
52	GG9999000035	
53	GG9999000008	destro sinistro
54	GG9999000003Z	
80	GG991200007Z	destro sinistro
81	GG121200075Z	
82	GG904906035Z	destro sinistro
83	GG905300006	
84	GG919800005Z	destro sinistro
85	GG950200102	



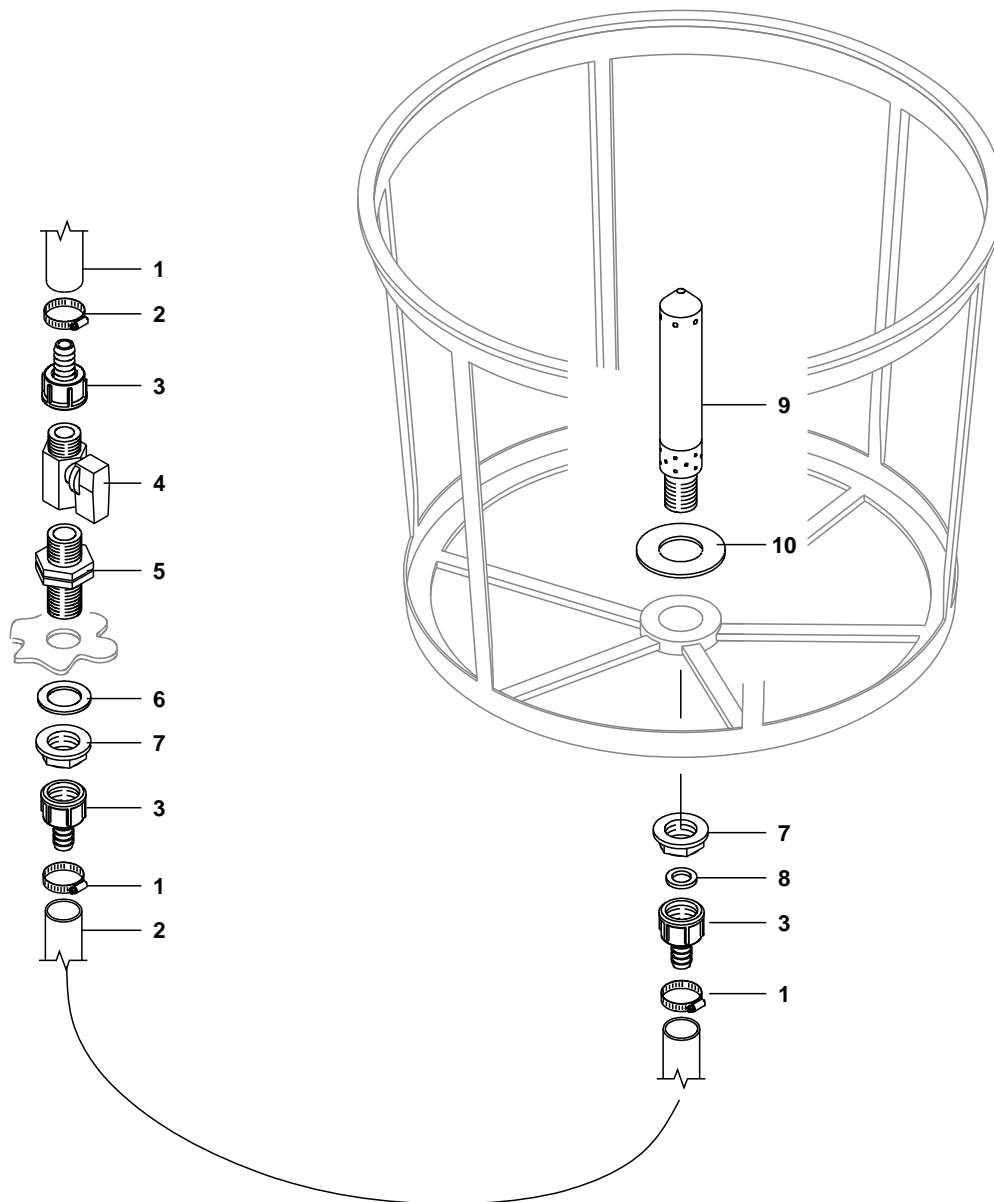
1	GGA002452032S
2	GGA00G40013
3	GGA00115320
3a	GGA00115313
4	GGA002002030
5	GG919714027X
5a	GG919711020X
6	GG561900000
6a	GG561300000
7	GGA002402032
8	GGA00G10041
9	GGA001302032
10	GGA002452022
11	GGA4062000.060
12	GGA002502030
13	GGA00100219
13a	GG999900035
14	GGA002502020
15	GGA00G10020
16	GGA002102020
17	GG999900008
18	GGA00400277
19	GGA00402909
20	GGA00G40012
21	GGA00105213
22	GGA002002020
23	GGA002352020
24	GG820110007
25	GG560284000

D=19
D=13

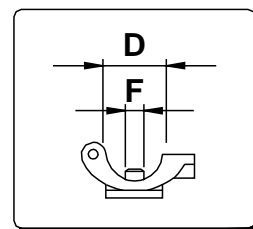
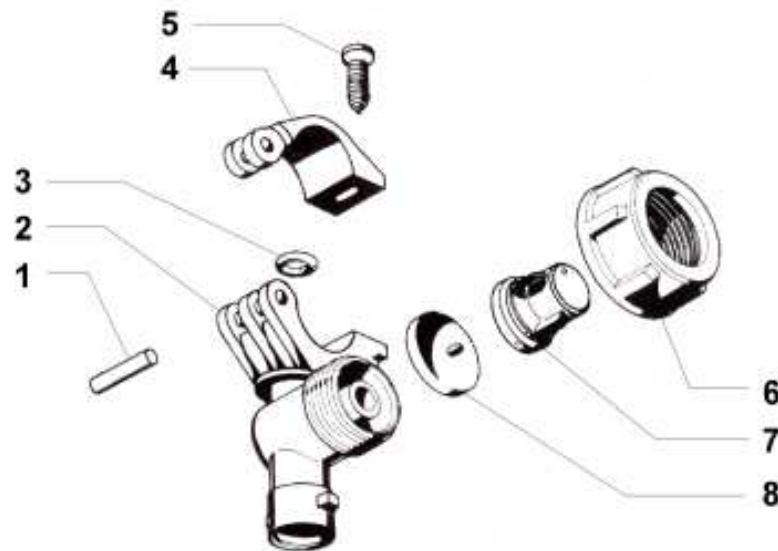
D=19
D=13



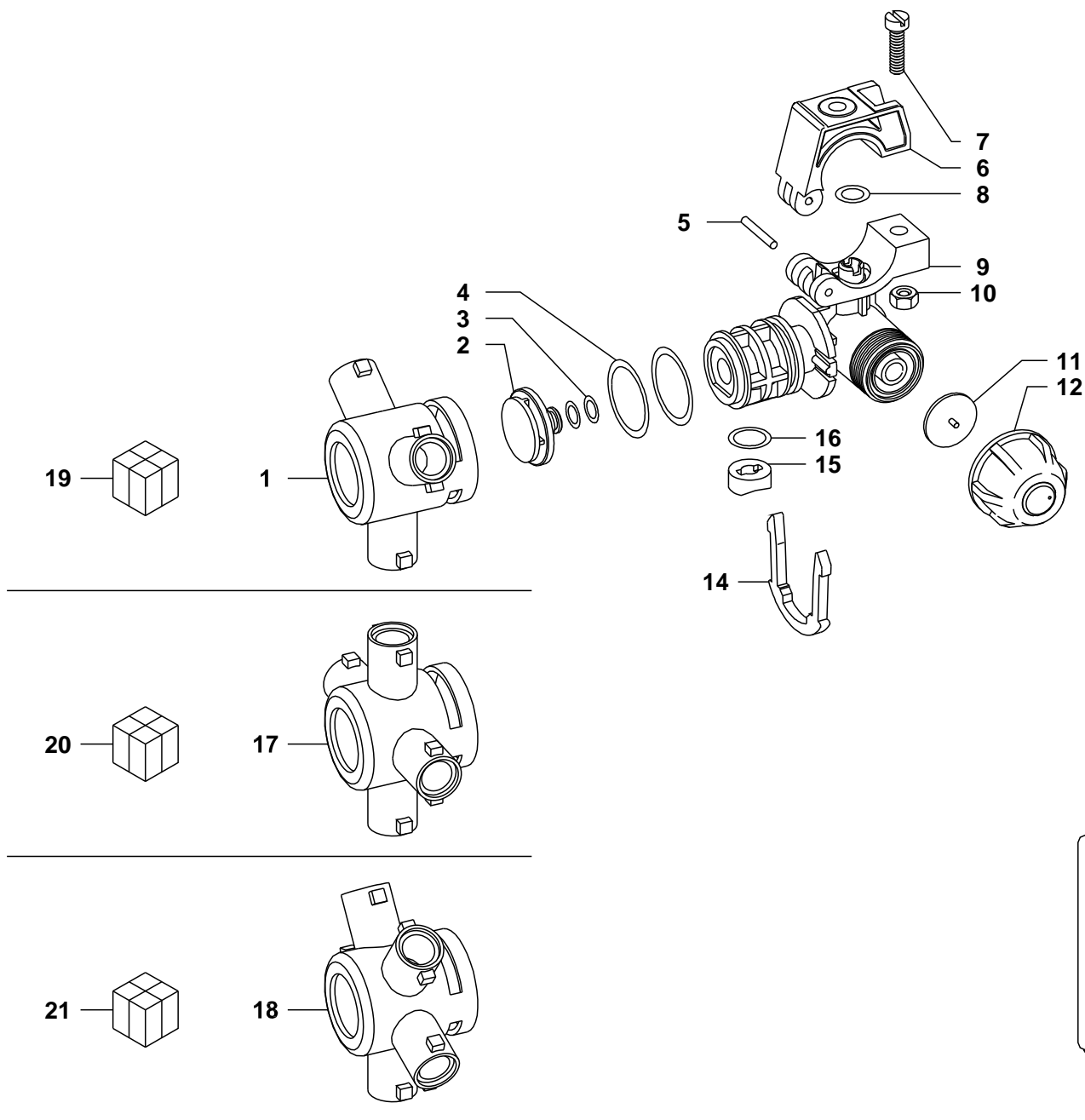
1	GG501100021V	
2	GG900108020Z	
3	GG907008017Z	
4	GGA003222034	
5	GGA00116313	D=13
5	GGA00116320	D=19
6	GGA00G10031	
7	GGA00106313	
8	GGA002002030	
9	GG919711020X	D=13
9	GG919714027X	D=19
10	BG002728	
11	GG905400008	



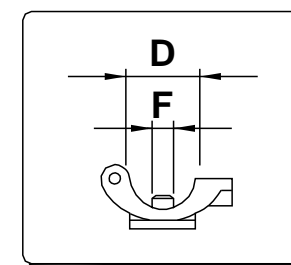
- | | |
|----|----------------|
| 1 | GG561301000 |
| 2 | GG919711020X |
| 3 | GG999900035 |
| 4 | GG570100014 |
| 5 | GGA002502021 |
| 6 | GGA00G40002 |
| 7 | GGA002052020 |
| 8 | GGA00G40012 |
| 9 | GGKROB.3206061 |
| 10 | GGKROB.3206062 |



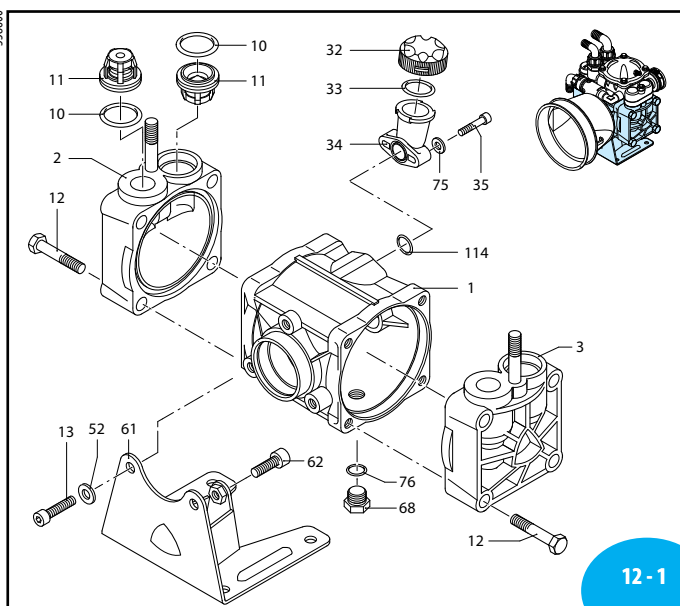
1	GGA400530.040	
2	GGA402735.010	D=1/2" F=7mm
2	A- 402745.010	D=1/2" F=10mm
2	A- 402755.010	D=25mm F=10mm
3	GGA400020.030	F=7mm
3	GGA400040.030	F=10mm
4	GGA400530.020	D=1/2"
4	A- 40055A.020	D=25mm
5	GG904805020X	
6	GGA002002030	
7	GGA402002.130	
8	A- 005860.036	(EPDM)
8	A- 005865.036	(Viton)



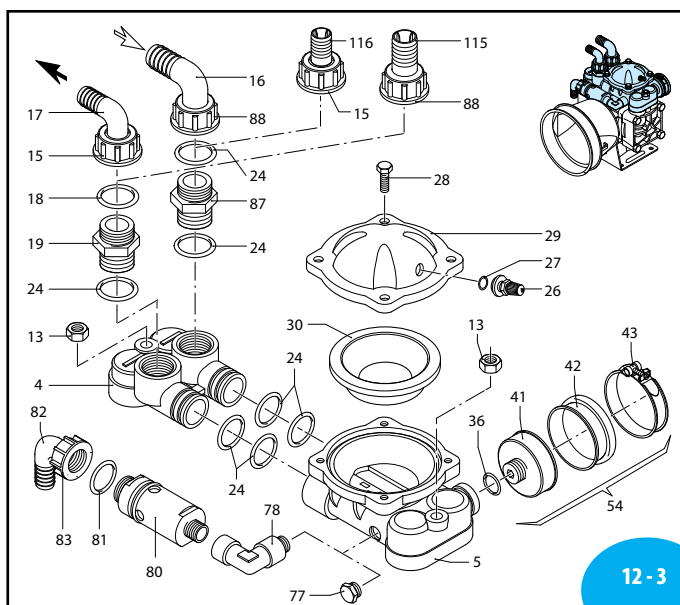
1	BG001580	
2	A- 4064000.030	
3	GGA4065910.070V	
4	GGA4062000.050	
5	GGA400530.040	
6	BG007632	D=1/2"
6	A- 40055A7.020	D=25mm
7	GG904906020X	
8	GGA400040.030	
9	BG007631	D=1/2" F=10
9	A- 4064055.010	D=25mm F=7
10	GG905100006X	
11	GGA005860.036	
12	BG022164	
14	BG001574	
15	BG001621	
16	GGA00G10021	
17	BG001579	
18	A- 4064900.020	
19	GGA004064237	D=1/2" F=7
19	GGA004064247	D=1/2" F=10
19	GGA00406425A7	D=25mm F=10
20	GGA004064747	D=1/2" F=10
20	GGA0040647A7	D=25mm F=10
21	GGA004064947	D=1/2" F=10



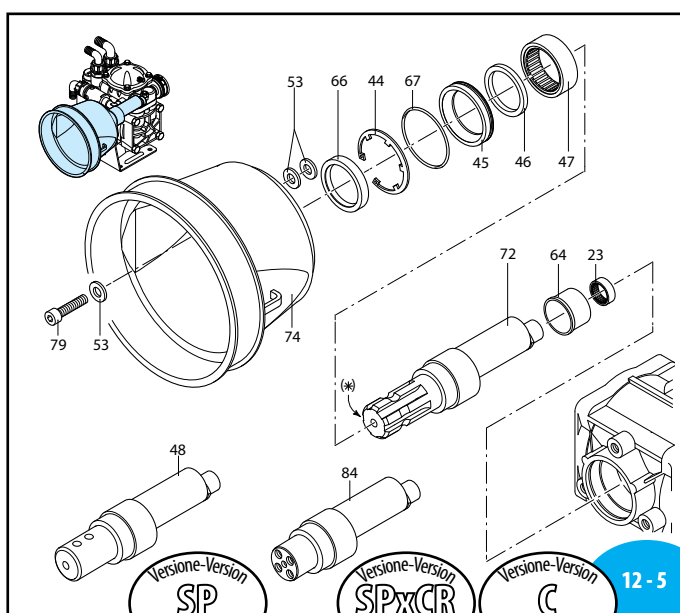
558600



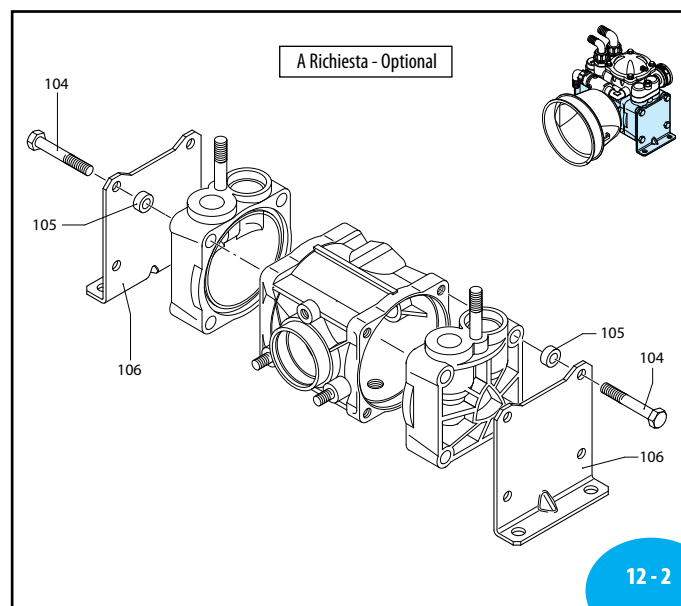
SL000310-BU



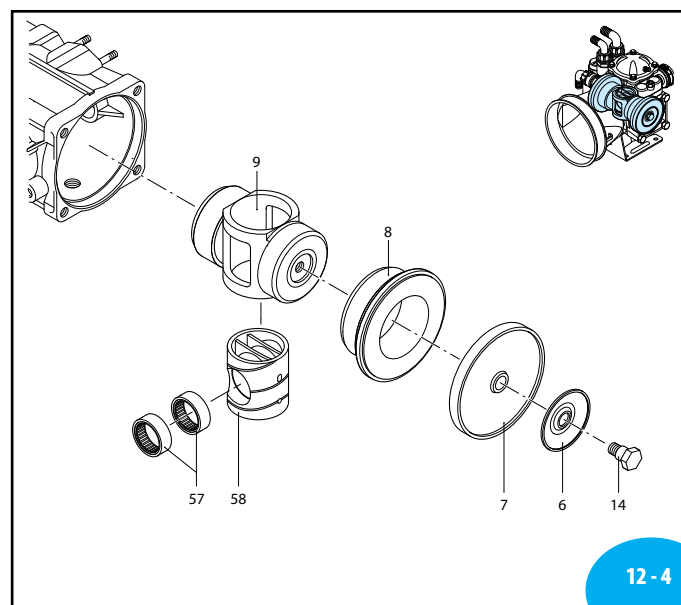
SL000311-BU



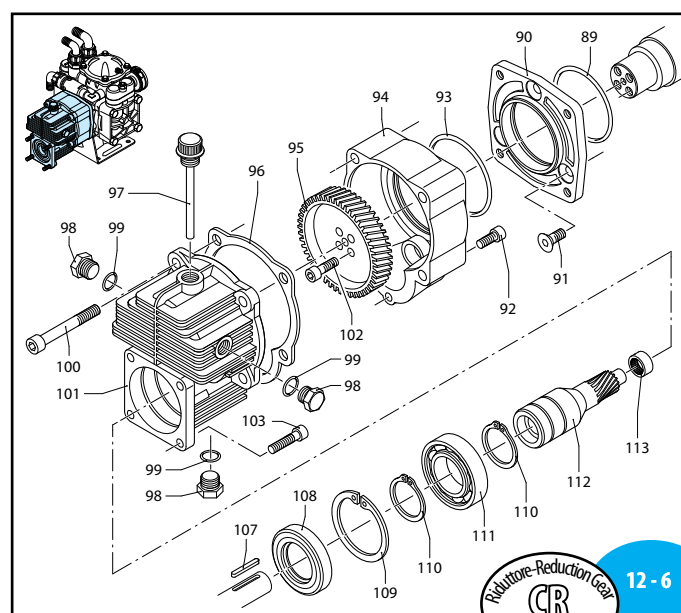
UN000477-DD



UN000796-ED



UN000478-DD



UN000479-IC

558820

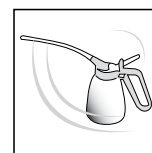
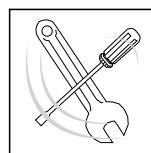
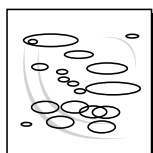
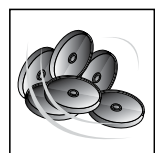
AR 70 bp

Pos.	Cod.	Descrizione	Description	Q.ty	Note
1	550011	Corpo pompa	Pump body	1	
2	550101	Testa valvola DX	Right head	1	
3	550102	Testa valvola SX	Left head	1	
4	550150	Attacco	Manifold	1	
5	550180	Semisfera inferiore	Lower air chamber	1	
6	580370	Piattello	Plate	2	(a)
7	550080	Membrana	Diaphragm	2	Gomma
8	550084	Membrana	Diaphragm	2	Viton
9	550085	Membrana	Diaphragm	2	Desmopan
10	550086	Membrana	Diaphragm	2	HpdS
11	550110	Camicia	Sleeve	2	
12	550120	Pistone	Piston	1	
13	320030	OR ø 31,5x4,5	O-Ring	4	90Sh ☒
14	759051	Valvola completa	Complete valve	4	
15	551040	Vite TE M 10x55	Bolt	8	Geomet C ₄₀
16	180152	Dado M 10	Nut	2	Geomet C ₄₀
17	580360	Perno membrana	Diaphragm pin	2	● C ₃₀
18	550880	Girello 1" G	Ring nut	1	
19	580040	Curva ø 30	Elbow	1	
20	550370	Curva ø 25	Elbow	1	
21	550350	OR ø 23,81x2,62	O-Ring	1	☒
22	550340	Nipples 1"G(M)-1"G(M)	Threaded adapter	1	
23	550310	Boccola a rullini	Roller bushing	1	↓
24	390290	OR ø 29x3	O-Ring	7	☒
25	550300	Valvola di gonfiaggio	Air valve	1	C ₃
26	650542	Guarnizione	Gasket	1	
27	550680	Vite TE M 8x20	Bolt	4	C ₂₀
28	550233	Semisfera superiore	Upper air chamber	1	Nera / Black
29	550190	Semicamera aria	Semi air chamber	1	Gomma
30	550191	Semicamera aria	Semi air chamber	1	Saturflon
31	550192	Semicamera aria	Semi air chamber	1	Viton
32	550193	Semicamera aria	Semi air chamber	1	H.P.D.S.
33	550057	Tappo serbatoio olio	Oil tank cap	1	Nero / Black
34	550040	OR ø 26,65x2,62	O-Ring	1	
35	550030	Serbatoio olio	Oil tank	1	
36	850851	Vite TCEI M 6x30	Bolt	2	C ₁₀
37	180101	OR ø 17,5x2	O-Ring	1	●
38	650661	Porta membrana	Diaphragm holder	1	●
39	650670	Membranina asp.	Suction diaphragm	1	
40	651670	Fascetta	Clamp	1	
41	200391	Anello seeger	Circlip	1	
42	550470	Bussola anello tenuta	Gasket retainer	1	
43	550070	Rondella tenuta	Spacer ring	1	
44	550060	Boccola a rullini	Roller bushing	1	↓
45	550170	Albero eccentrico "SP"	"SP" shaft	1	(AL)
46	200233	Rosetta øi 10,5	Washer	2	Geomet
47	320621	Rosetta øi 10,5	Washer	5	Geomet
48	659209	Prem. membranina asp.	Suct. diaphragm assembly	1	
49	550280	Boccola a rullini	Roller bushing	2	↓
50	550140	Cilindro traina pistone	Cylinder	1	☒

Pos.	Cod.	Descrizione	Description	Q.ty	Note
61	580080	Piede corpo pompa	Base	1	
62	540301	Vite TCEI M 10x30	Bolt	1	Geomet C ₄₀
63	550160	Distanziale	Spacer	1	
64	550491	Anello tenuta	Seal ring	1	☒
65	650920	OR ø 53,65x2,62	O-Ring	1	☒
66	880530	Tappo 3/8" G	Plug	1	C ₂₀
67	550173	Albero eccentrico "C"	"C" shaft	1	(AM)
68	1500350	Protezione cardano	Cardan protection	1	
69	550332	Rosetta øi 6,5	Washer	2	Geomet
70	740290	OR ø 14x1,78	O-Ring	1	▶
71	330173	Tappo 1/2" G	Plug	1	● C ₂₀
72	881560	Gomitolo 90° 1/2" G (M)-(F)	Elbow	1	■
73	620472	Vite TCEI M 10x20	Bolt	3	Geomet C ₃₀
74	1609000	Valvola di sicurezza	Safety valve	1	■
75	880831	OR ø 15,54x2,62	O-Ring	1	Viton
76	550460	Curva ø 18	Elbow	1	
77	550450	Girello 3/4" G	Ring nut	1	
78	550175	Albero eccentr. "CRxS"	"CRxS" shaft	1	(AN)
79	450120	Nipples 1"-1 1/4" G (M)-(M)	Threaded adapter	1	
80	550870	Girello 1" 1/4 G	Ring nut	1	
81	580230	OR ø 69,52x2,62	O-Ring	1	▶
82	550920	Flangia	Flange	1	
83	550950	Vite TSEI M 10x25	Bolt	3	● C ₂₀
84	180030	Vite TCEI M 8x20	Bolt	1	C ₂₅
85	620561	OR ø 78x2,5	O-Ring	1	☒
86	621000	Coperchio riduttore	Gear cap	1	
87	550930	Ruota dentata	Gear	1	Z= 64
88	620950	Guarnizione scatola	Gasket	1	
89	1140370	Tappo olio + OR	Oil plug & o-ring	1	
90	1980740	Tappo 3/8" G	Plug	3	Ottone/Brass ● C ₂₀
91	740290	OR ø 14x1,78	O-Ring	3	
92	621010	Vite TCEI M 10x75	Bolt	4	● C ₂₅
93	620960	Scatola riduttore	Gear box	1	
94	540290	Vite TCEI M 8x25	Bolt	4	● C ₂₅
95	651000	Vite TCEI 5/16"	Bolt	4	24UNFx1" C ₂₀
96	1300361	Vite TE M 10x65	Bolt	8	Geomet C ₄₀
97	551030	Distanziale piede	Spacer	8	
98	551020	Piede	Base	2	
99	881090	Linguetta	Key	1	
100	961800	Anello tenuta	Seal ring	1	☒
101	961790	Anello seeger	Circlip	1	
102	320240	Anello seeger	Circlip	2	
103	961780	Cuscinetto	Bearing	1	☒
104	621660	Pignone	Pinion	1	Z= 11
105	620990	Cuscinetto	Bearing	1	☒
106	180101	OR ø 17,5x2	O-Ring	1	▶
107	550210	Portagomma ø 25	Hose tail	1	
108	392190	Portagomma ø 40	Hose tail	1	

Bassa Pressione
Low Pressure

1532 C10455MG



KIT 2361 Membrane gomma Buna diaphragms	
KIT 2362 Membrane HPDS HPDS diaphragms	
KIT 2363 Membrane Desmopan Desmopan diaphragms	
Pos.	Q.ty
7	2

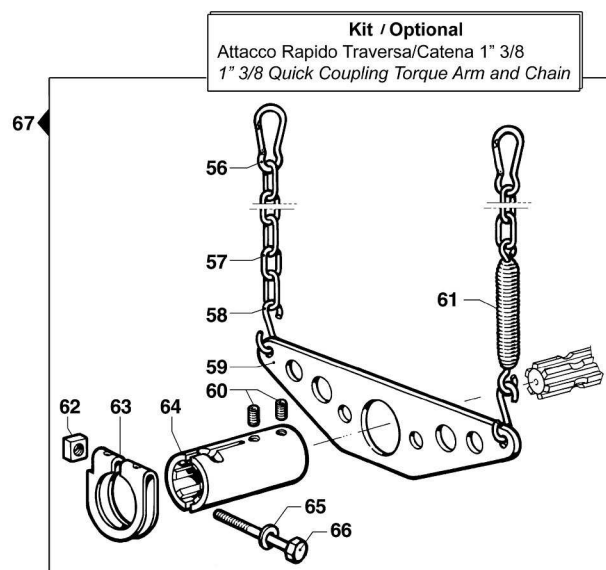
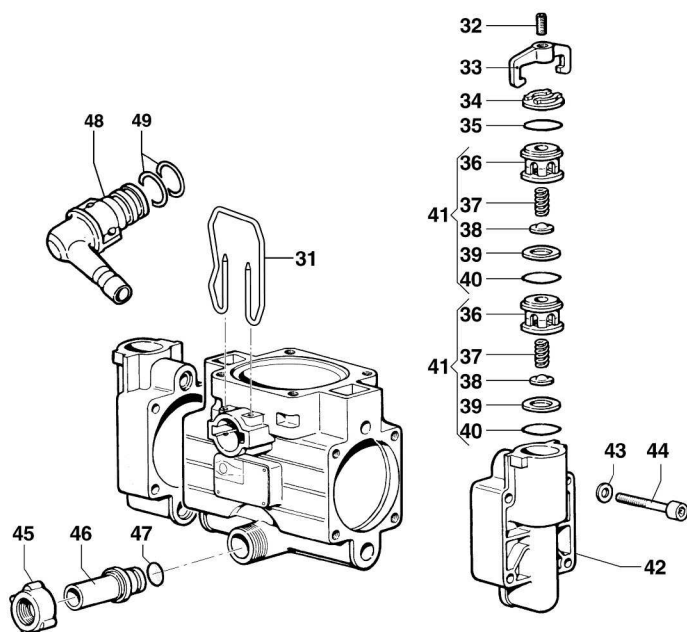
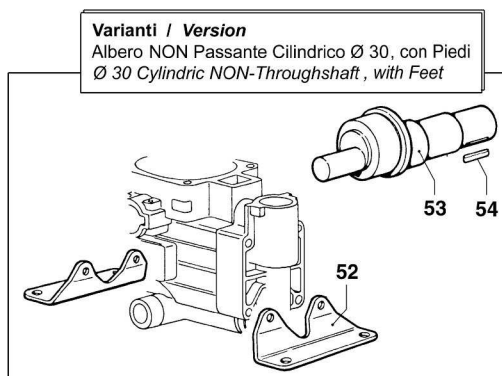
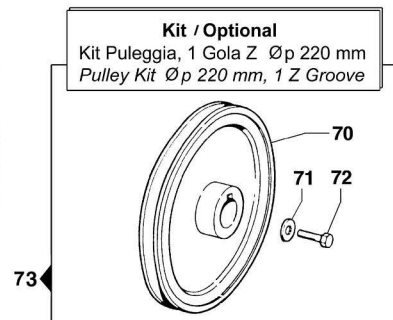
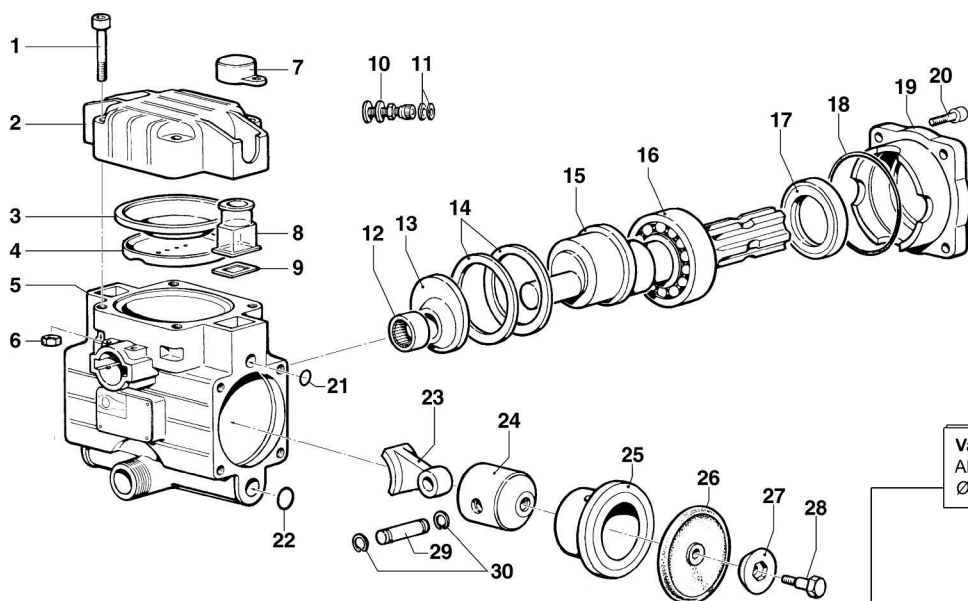
KIT 2364 Valvole Valves	
Pos.	Q.ty
10	4
11	4

KIT 2365 OR O-Rings	
Pos.	Q.ty
10	4
18	1
24	7
27	1
33	1
36	1
67	1
76	1

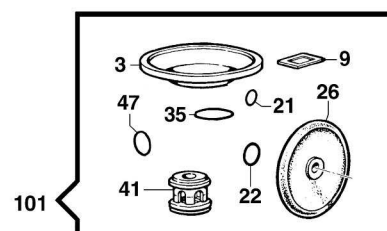
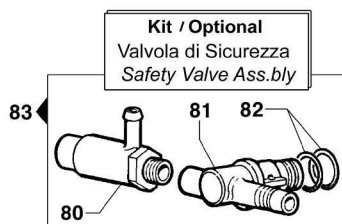
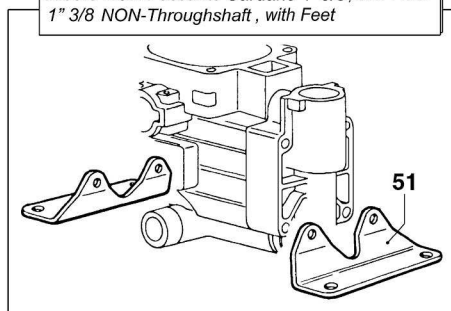
KIT 2366 Pronto intervento membrane in gomma Maintenance repair buna diaphragm					
Pos.	Q.ty	Pos.	Q.ty	Pos.	Q.ty
6	1	24	7		
7	2	32	1		
10	4	33	1		
11	4	34	1		
14	1	36	1		
15	1	66	1		
16	1	87	1		
17	1	88	1		
18	1				
19	1				

Olio utilizzato Used oil	
Tipo - Type	Kg
Pompa-Pump SAE 30	1
Ridut.-Gear box SAE 30	0,26

(a) Montare con GRASSO PG 54 fra piattello e membrana
(a) During assembling use PG 54 GREASE between plate and diaphragm



Varianti / Version
Albero NON Passante Cardano 1" 3/8, con Piedi
1" 3/8 NON-Throughshaft, with Feet



BP 20/15

550 RPM

N°	Cod.	Descrizione	Description	Note	Qty	Model
1	3609 0192	Vite	Screw	M10x50	4	
2	0003 0025	Accumulatore Press. Sup.	Pressure Accumulator		1	
3	1800 0033	Membrana Accumulatore	Diaphragm		1	
4	0460 0011	Calotta Sost. Membrana	Diaphragm Support Cap		1	
5	0403 0083	Carter Pompa	Pump Crankcase		1	
6	0604 0105	Dado	Nut	M10	4	
7	1800 0081	Membrana Comp. Volum.	Volum. Comp. Diaphragm		2	
8	0421 0013	Compensatore Volumetrico	Volumetric Compensator		2	
9	1201 0071	Guarnizione Piana	Flat Gasket		2	
10	3610 0003	Valvola Aria	Air Valve		1	
11	1209 0033	Guarnizione	Gasket	Ø14x7,5x2	2	
12	0437 0026	Cuscinetto Rulli	Roller Bearing	Ø20x26x20	1	
13	2813 0063	Rondella Tenuta Biella	Connecting Rod Washer	Ø62x20x14,5	1	
14	0010 0008	Anello Tenuta Biella	Connecting Rod Ring	Ø68x55x6	2	
15	0001 0245	Albero Non Passante	NON-Throughshaft	1"3/8	1	
16	0438 0010	Cuscinetto a Sfere	Ball Bearing	Ø35x72x17	1	
17	0019 0075	Anello Tenuta	Oil Seal	Ø35x62x7	1	
18	1210 0069	Guarnizione OR	O-Ring	Ø1,8x83	1	
19	0405 0063	Coperchio porta Cusc.	Support Cover		1	
20	3609 0202	Vite	Screw	M10x35	4	
21	1210 0057	Guarnizione OR	O-Ring	Ø2,62x10,78	2	
22	1210 0021	Guarnizione OR	O-Ring	Ø2,62x15,54	2	
23	0205 0021	Kit Biella 2SET	Con-Rod Assembly		1	
24	2409 0023	Pistone	Piston	Ø45	2	
25	0400 0030	Camicia	Piston Sleeve	Ø45x14,3	2	
26	1800 0020	Membrana Pompa	Diaphragm	Gomma Nitrilica Buna Rubber	2	
	1800 0102	Membrana Pompa	Diaphragm	Desmopan ®	2	
	1800 0028	Membrana Pompa	Diaphragm	Viton ®	2	
27	0602 0008	Disco Tenuta Membrana	Disc		2	
28	3605 0027	Vite Speciale Membrana	Diaphragm Holder Screw	M8	2	
29	3011 0006	Spinotto	Gudgeon Pin	Ø12x36,5	2	
30	3020 0020	Seeger Interno	Inner Seeger	Ø12	4	
31	1202 0060	Gancio Fissaggio Mandata	Delivery Hook	Ø30	1	
32	3622 0017	Vite senza Testa Esag. Inc.	Screw	M8x16	2	
33	0418 0033	Cavallotto	U-Bolt		2	
34	3202 0081	Tappo Valvola Aspir./Mand.	Plug		2	
35	1210 0191	Guarnizione OR	O-Ring	Ø3x25	2	
36	1205 0021	Gabbia Valvola Aspir./Mand.	Suct./Del. Valve Cage		4	
37	1802 0125	Molla Valvola Aspir./Mand.	Suct./Del. Valve Spring		4	
38	3604 0007	Valvola Aspir./Mandata	Suct./Delivery Valve		4	
39	3009 0111	Sede Valvola Aspir./Mand.	Suct./Del. Valve Seat		4	
40	1210 0191	Guarnizione OR	O-Ring	Ø3x25	4	
41	1220 0033	Gruppo Valvola Aspir./Mand.	Suct./Del. Valve Ass.y kit		4	
42	3218 0069	Testata Pompa	Pump Manifold		2	
43	2811 0099	Rondella	Washer	Ø8,4x15x1,6	8	
44	3609 0159	Vite	Screw	M8x50	8	
45	1200 0008	Galletto	Wing Nut	30MB	1	
46	2800 0019	Raccordo p.g. Rifiuto Diritto	Straight Hose By-pass Tail	Ø15,5x23	1	
47	1210 0046	Guarnizione OR	O-Ring	Ø2,62x17,13	1	
48	2803 0027	Raccordo Rapido p.g. Curvo	Elbow Quick Coupling	Ø16	1	
49	1210 0002	Guarnizione OR	O-Ring	Ø2,62x20,7	2	

N°	Cod.	Descrizione	Description	Note	Qty	Model
----	------	-------------	-------------	------	-----	-------

Varianti

Version

51	2400 0043	Piede Sostegno Pompa	Pump Mounting Bracket		2	
----	-----------	----------------------	-----------------------	--	---	--

Varianti

Version

52	2400 0043	Piede Sostegno Pompa	Pump Mounting Bracket		2	
53	0001 0247	Albero Non Passante	NON-Throughshaft		1	
54	1602 0049	Linguetta	Key	8x7x22	1	

Kit

Optional

56	1202 0009	Gancio	Hook		2	
57	0465 0001	Catena ad Anelli	Chain	500 mm	2	
58	1202 0006	Gancio	Hook	Ø6	2	
59	3221 0003	Traversa Attacco Rapido	Torque Arm for Quick Coup.		1	
60	3622 0011	Vite Senza Testa Esag. Inc.	Screw	M8x10	2	
61	1802 0040	Molla + Gancio	Spring + Hook	Øe20x100	1	
62	0600 0037	Dado Speciale	Special Bolt	M12x6	1	
63	0417 0005	Collare Inn.Attacco Rap.	Collar		1	
64	1407 0006	Innesto Calettato	Quick Coupling	Ø1"3/8	1	
65	2811 0025	Rondella	Washer	Ø13x20x2,5	1	
66	3607 0115	Vite Testa Esagonale	Hexagonal Screw	M12x75	1	
67	5002 0017	Kit Traversa Attacco Rapido	Torque Arm for Quick Coup. Kit		1	

Kit

Optional

70	2424 0047	Puleggia	Pulley	1Z - Øp220	1	
71	2812 0053	Rondella	Washer	Ø9x40x5	1	
72	3607 0026	Vite Testa Esagonale	Hexagonal Screw	M8x25	1	
73	5001 0065	Kit Puleggia	Pulley Kit	1Z - Øp220	1	

Kit

Optional

80	1219 0052	Valvola di Sicurezza	Safety Valve	15 Bar 0-100L	1	
81	2803 0359	Raccordo porta Valvola	Safety Valve Coupling	Ø19 - G3/8"	1	
82	1210 0002	Guarnizione OR	O-Ring	Ø2,62X 20,7	2	
83	2803 0530	Kit Valvola di Sicurezza	Safety Valve Kit	15 Bar 0-100L	1	

Kit Manutenzione

Maintenance Kit

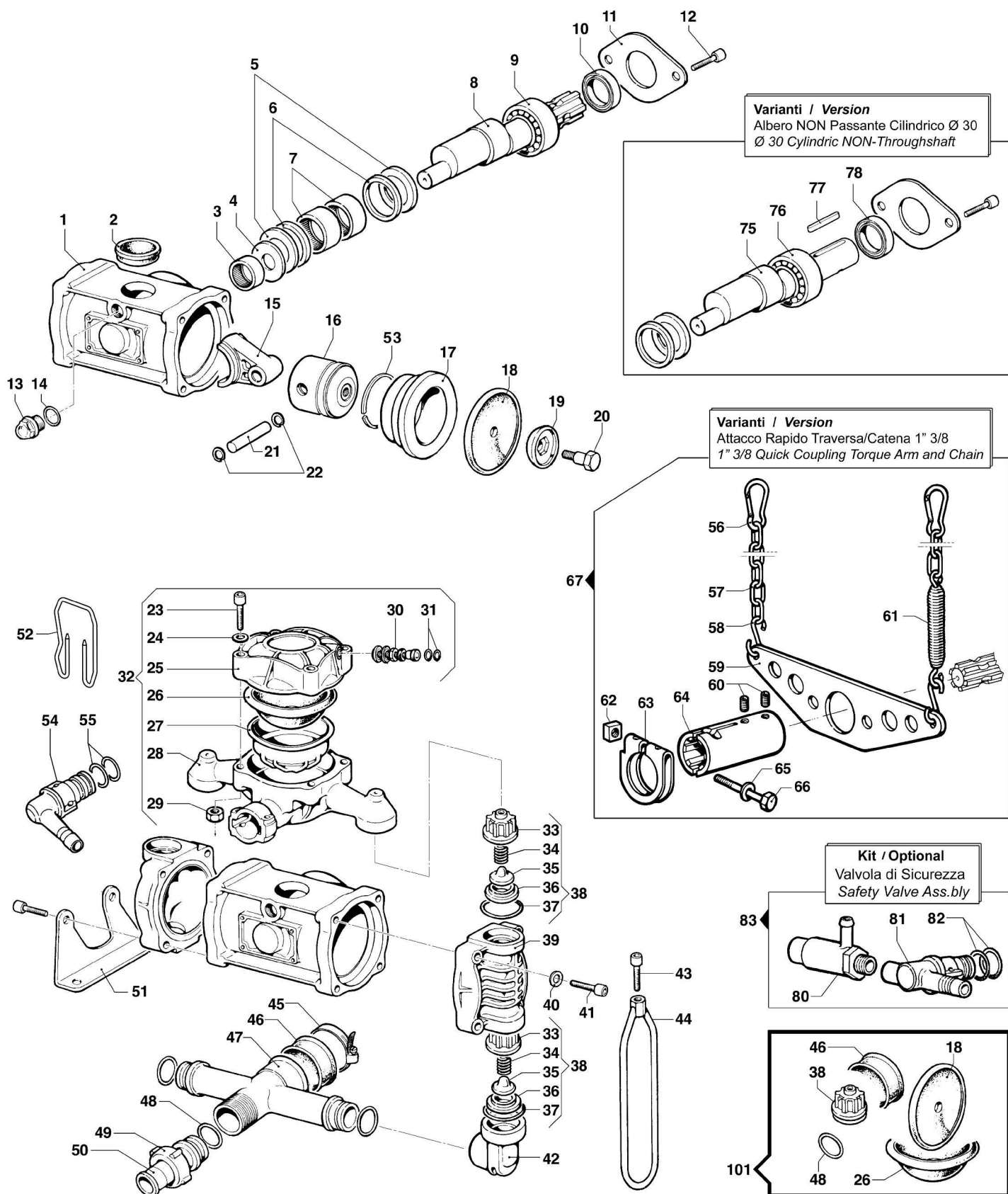
101	5026 0069	Kit Manutenzione Ordinaria	Ordinary Maintenance Kit		1	
-----	-----------	----------------------------	--------------------------	--	---	--

BP K Series

BP 60 K

Pompe a Membrana - Diaphragm Pumps

550 RPM



Pompa Base
Standard Pump

Albero NON Passante 1"3/8M, con Piedi
 1"3/8M NON-Throughshaft, with Feet

BP 60 K

550 RPM

N°	Cod.	Descrizione	Description	Note	Q.ty	Model
1	0403 0132	Carter Pompa	Pump Crankcase		1	
2	1800 0030	Membrana Compens. Volum.	Volum. Comp. Diaphragm		1	
3	0437 0030	Cuscinetto Rulli	Roller Bearing	Ø20x28x20	1	
4	2813 0024	Rondella Tenuta Biella	Connecting Rod Washer	Ø20x50x3	1	
5	0601 0045	Distanziale	Spacer		2	
6	0010 0013	Anello Tenuta Biella	Connecting Rod Ring	Ø60x50x6	2	
7	0437 0031	Cuscinetto Rulli	Roller Bearing	Ø35x42x16	2	
8	0001 0097	Albero Non Passante	NON-Throughshaft	1"3/8 M	1	
9	0438 0015	Cuscinetto a Sfere	Ball Bearing	Ø35x62x14	1	
10	0019 0010	Anello Tenuta	Oil Seal	Ø35x62x10	1	
11	1004 0013	Flangia Tenuta Paraolio	Flange		1	
12	3609 0171	Vite	Screw	M10x16	2	
13	3201 0021	Tappo Olio	Oil Dipstick	3/8" GAS	1	
14	1210 0025	Guarnizione OR	O-Ring	Ø2,9x13,8	1	
15	0205 0025	Kit Biella 2SET	Connecting Rod Assembly		1	
16	2409 0096	Pistone	Piston	Ø70	2	
17	0400 0087	Camicia	Piston Sleeve	Ø70	2	
18	1800 0002	Membrana Pompa	Diaphragm	Gomma Nitrilica Buna Rubber	2	
	1800 0178	Membrana Pompa	Diaphragm	Desmopan ®	2	
	1800 0032	Membrana Pompa	Diaphragm	Viton ®	2	
19	0602 0045	Disco Tenuta Membrana	Disc		2	
20	3605 0005	Vite Speciale Ten. Membr.	Diaphragm Holder Screw	M12x1,5	2	
21	3011 0001	Spinotto	Gudgeon Pin	Ø15x53	2	
22	3020 0001	Seeger Interno	Inner Seeger	Ø15	4	
23	3609 0182	Vite	Screw	M10x60	4	
24	2811 0098	Rondella	Washer	Ø10,5x18x2	4	
25	0003 0015	Accumulatore Press. Sup.	Pressure Accumulator		1	
26	1800 0034	Membrana Accumulatore	Diaphragm		1	
27	0460 0036	Calotta Sostegno Membr.	Diaphragm Support Cap		1	
28	0002 0028	Accumulatore Press. Infer.	Pressure Accumulator		1	
29	0604 0105	Dado	Nut	M10	4	
30	3610 0003	Valvola Aria	Air Valve		1	
31	1209 0033	Guarnizione	Gasket	Ø14x7,5x2	2	
32	0102 0010	Kit Accumulatore Press.	Pressure Accumulator Kit		1	
33	1205 0034	Gabbia Valv. Aspir./Mand.	Suct./Delivery Valve Cage		4	
34	1802 0255	Molla	Spring		4	
35	3604 0009	Valvola Aspiraz./Mandata	Suction/Delivery Valve		4	
36	3009 0022	Sede Valvola Aspir./Mand.	Suct./Delivery Valve Seat		4	
37	1210 0419	Guarnizione OR	O-Ring	Ø6x37x49	4	
38	1220 0046	Gruppo Valv. Aspir./Mand.	Suct./Del. Valve Ass.y kit		4	
39	3218 0123	Testata Pompa	Pump Manifold		2	
40	2811 0098	Rondella	Washer	Ø10,5x18x2	4	
41	3609 0161	Vite	Screw	M10x45	8	
42	2804 0012	Raccordo Curvo Aspiraz.	Elbow Suction Coupling		2	
43	3609 0160	Vite	Screw	M10x30	2	
44	0418 0041	Cavallotto	U-Bolt		2	
45	1003 0036	Fascetta	Hose Clamp		1	
46	1800 0017	Membrana Polmone Aspir.	Diaphragm		1	
47	3212 0025	Tubo Aspirazione	Suction Hose		1	
48	1210 0096	Guarnizione OR	O-Ring	Ø3,53x21,82	3	

N°	Cod.	Descrizione	Description	Note	Q.ty	Model
49	1200 0009	Galletto	Wing Nut	M36x2	1	
50	2800 0010	Raccordo p.g. Aspir. Diritto	Suction Hose Tail	Ø19x26	1	
51	2400 0052	Piede Sostegno Pompa	Pump Mounting Bracket		2	
52	1202 0060	Gancio Fissaggio Mandata	Delivery Hook		1	
53	0020 0001	Anello Compressione	Compression Ring		2	
54	2803 0033	Raccordo Rapido p.g. Curvo	Elbow Quick Coupling	Ø20	1	
55	1210 0002	Guarnizione OR	O-Ring	Ø2,62x20,7	2	

Varianti

Version

56	1202 0009	Gancio	Hook		2	
57	0465 0001	Catena ad Anelli	Chain	500 mm	2	
58	1202 0006	Gancio	Hook	Ø6	2	
59	3221 0001	Traversa Attacco Rapido	Torque Arm for Quick Coup.		1	
60	3622 0011	Vite Senza Testa Esag. Inc.	Screw	M8x10	2	
61	1802 0040	Molla (Filo Ø2,5) + Gancio	Spring (Wire Ø2,5) + Hook	Øe20x100	1	
62	0600 0037	Dado Speciale	Special Bolt	M12x6	1	
63	0417 0005	Collare Innesto Attacco Rap.	Collar		1	
64	1407 0006	Innesto Calettato	Quick Coupling	Ø1"3/8	1	
65	2811 0025	Rondella	Washer	Ø13x20x2,5	1	
66	3607 0115	Vite Testa Esagonale	Hexagonal Screw	M12x75	1	
67	5002 0008	Kit Traversa Attacco Rapido	Torque Arm for Quick Coup. Kit		1	

Varianti

Version

75	0001 0050	Albero Non Passante	NON-Throughshaft	Ø30 Cil.	1	
76	0438 0016	Cuscinetto a Sfere	Ball Bearing	Ø30x62x16	1	
77	1602 0018	Linguetta	Key	8x7x40	1	
78	0019 0016	Anello Tenuta	Oil Seal	Ø30x62x10	1	

Kit

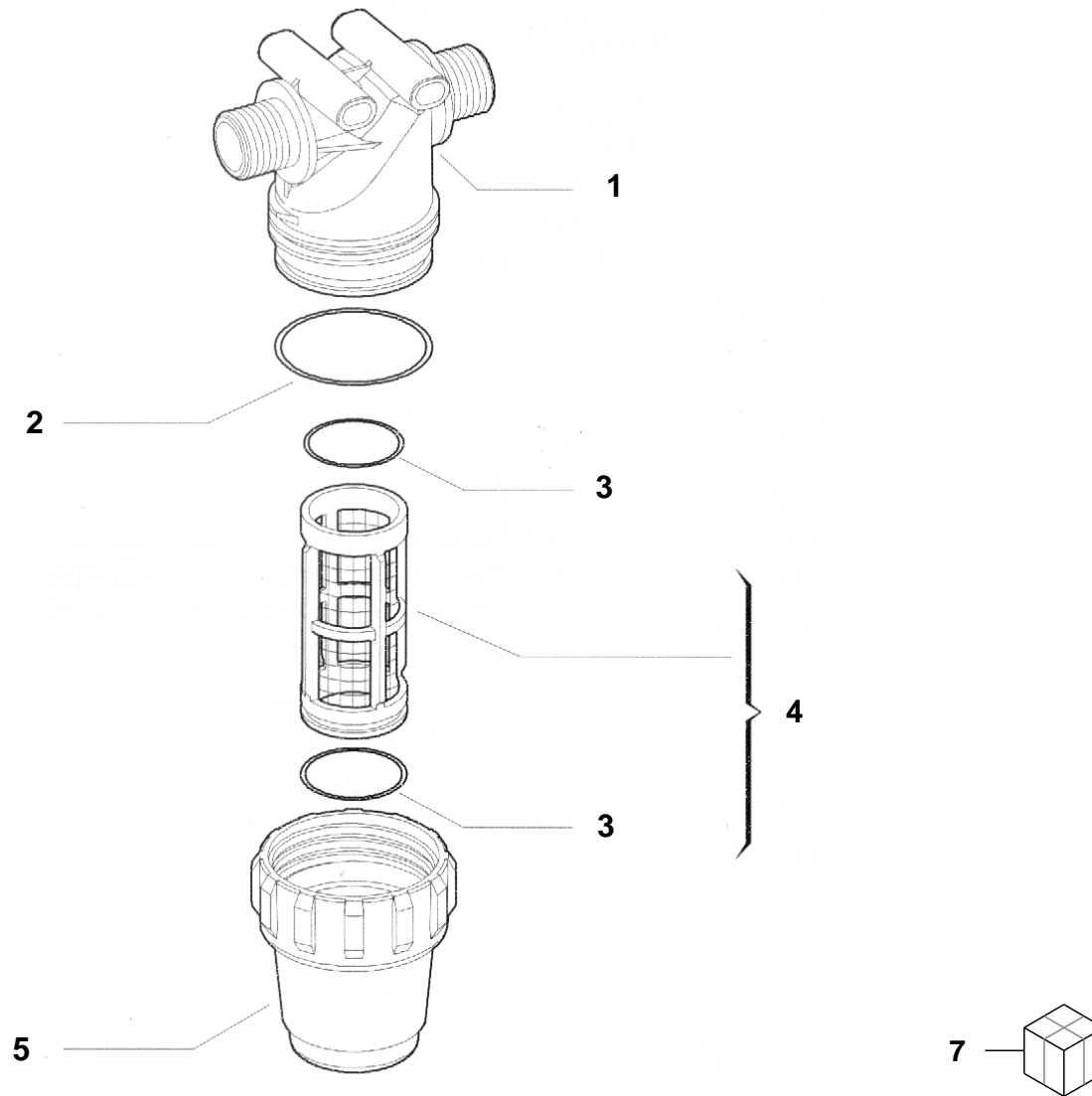
Optional

80	1219 0042	Valvola di Sicurezza	Safety Valve	20 Bar 0-100L	1	
81	2803 0358	Raccordo porta Valvola	Safety Valve Coupling	Ø15 - G3/8"	1	
82	1210 0002	Guarnizione OR	O-Ring	Ø2,62x20,7	2	
83	2803 0353	Kit Valvola di Sicurezza	Safety Valve Kit	20 Bar 0-100L	1	

Kit Manutenzione

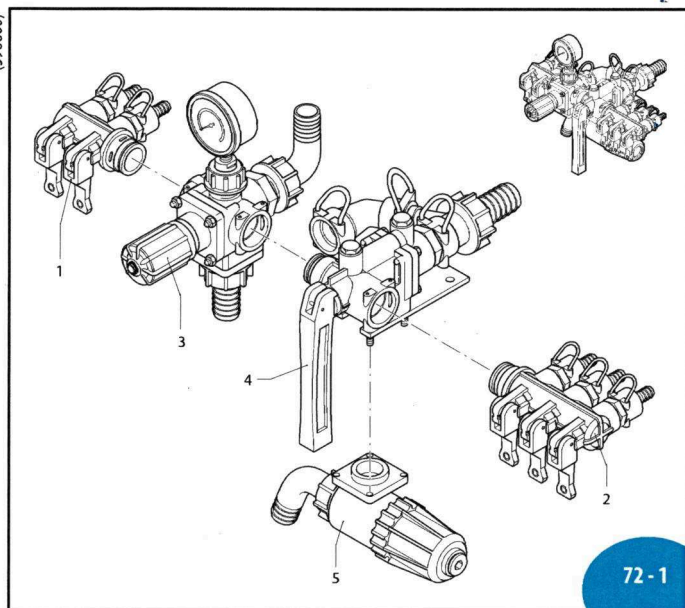
Maintenance Kit

101	5026 0344	Kit Ricambi Manutenzione	Ordinary Maintenance Kit		1	
-----	-----------	--------------------------	--------------------------	--	---	--

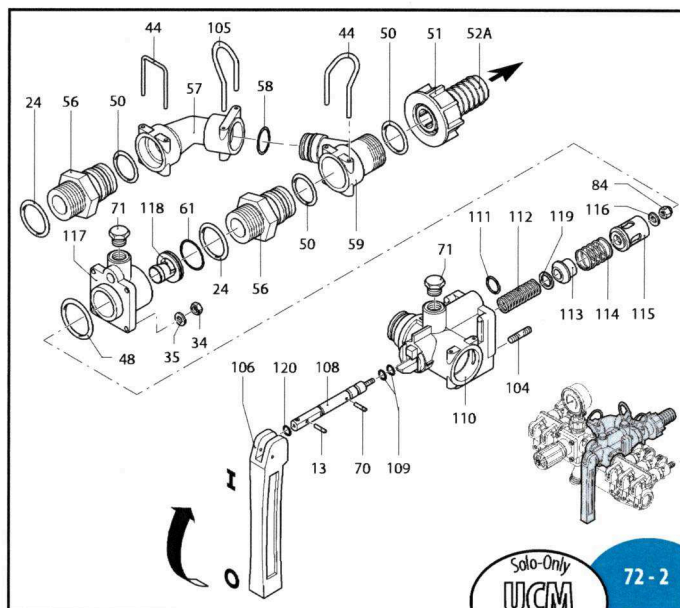


1	GGA3222020.010	G1/2"
1	GGA3222030.010	G3/4"
2	GGA322000.040	
3	GGA322000.050	
4	GGA322004.030	100 mesh
4	GGA322003.030	50 mesh
4	GGA3220035.030	80 mesh
4	BB602322002030	32 mesh
5	GGA322000.020	
7	GGA003222024	G1/2" 100mesh
7	GGA003222034	G3/4" 100mesh

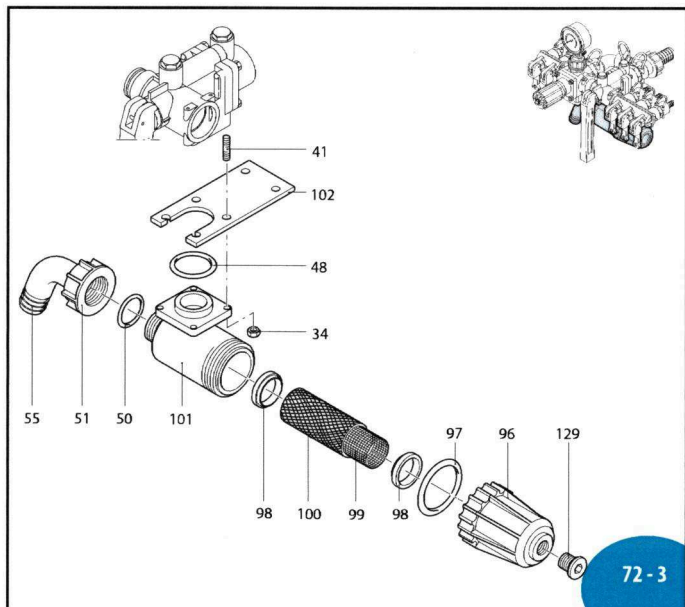
(398600)



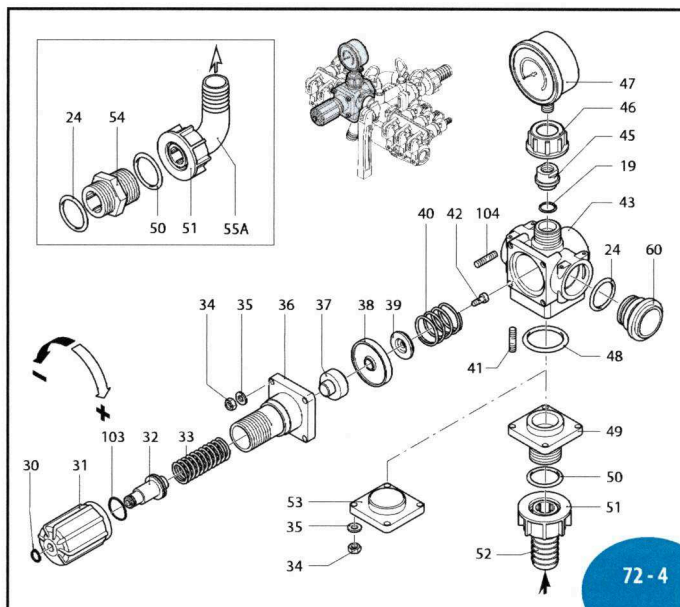
UN970192-DD



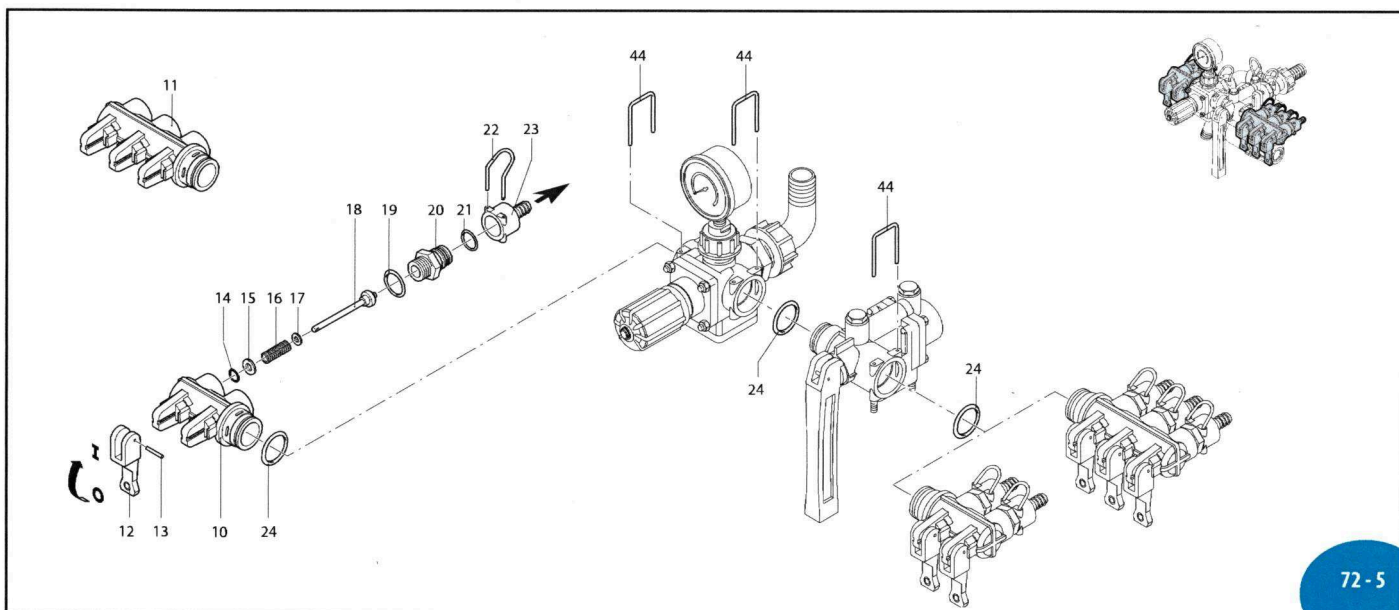
UN970193-DD



UN970194-DD



UN970196-DD



UN970195-DD

ECM - UCM

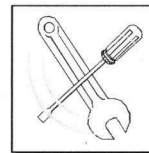
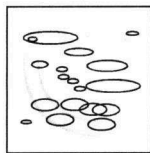
sp_ECM_UCM.pdf

Pos.	Cod.	Descrizione	Description	Q.ty	Note
1	1547	Gruppo rub.2 vie SX	Left 2-way valve	1	Uscita/Outlet ø 12
	1548	Gruppo rub.3 vie SX	Left 3-way valve	1	Uscita/Outlet ø 12
2	1571	Gruppo rub.2 vie DX	Right 2-way valve	1	Uscita/Outlet ø 12
	1572	Gruppo rub.3 vie DX	Right 3-way valve	1	Uscita/Outlet ø 12
3	1348	Valvola reg.comp.ECM	ECM compl.reg.valve	1	
	1349	Valvola reg.comp.UCM	UCM compl.reg.valve	1	
4	1351	Corpo distributore+R	Distributor body+R	1	
5	1553	Gruppo filtro compl.	Complete filter	1	
10	394850	Corpo rubinetto 2 vie	2-way valve body	1	
11	394860	Corpo rubinetto 3 vie	3-way valve body	1	
12	394690	Leva rubinetto rossa	Red valve lever	4	
13	390330	Spina elastica	Pin	5	
14	390341	OR ø 5x2	O-Ring	4	☒
15	393790	Rosetta øi 6,4	Washer	4	☒
16	390300	Molla asta valvola	Spring	4	☒
17	390313	Rosetta øi 9	Washer	4	☒
18	390323	Asta valvola completa	Complete valve rod	4	☒
19	180101	OR ø 17,5x2	O-Ring	5	☒
20	392600	Nipples sede 20x1,5	Threaded adapter	4	☒
21	640070	OR ø 13,95x2,62	O-Ring	4	☒
22	392580	Forcella	Fork	4	
23	392870	Portagomma ø 10	Hose tail	4	
	392590	Portagomma ø 12	Hose tail	4	
	392620	Portagomma ø 20	Hose tail	4	
24	390291	OR ø 28,25x2,62	O-Ring	5	☒
30	480550	Anello seeger	Circlip	1	
31	394790	Manopola regolazione	Adjustment knob	1	
32	394770	Perno compr. molla	Spring pin	1	
33	1040830	Molla	Spring	1	☒
34	390440	Dado M 6	Nut	16	C ₁₀
35	550331	Rosetta øi 6,5	Washer	12	
36	394780	Corpo superiore	Upper body	1	
37	394751	Pistone	Piston	1	
38	394741	Membranina	Diaphragm	1	Gomma
	394740	Membranina	Diaphragm	1	Desmopan
	394742	Membranina	Diaphragm	1	Viton
39	394720	Valvola	Valve	1	
40	394730	Molla di contrasto	Spring	1	
41	394830	Prigioniero M 6x34	Stud	8	C ₆
42	680700	Vite TCEI M 6x20	Bolt	1	☒
43	394700	Corpo valvola reg.	Regulating valve body	1	
44	395530	Forcella	Fork	5	
45	394800	Attacco manometro	Pressure gauge attach.	1	
46	550450	Girello 3/4" G	Ring nut	1	
47	391240	Manometro ø 63	Pressure gauge	1	0-24 bar ☒
48	660170	OR ø 31,42x2,62	O-Ring	3	☒
49	394810	Flangia entrata	Flange	1	
50	550350	OR ø 23,81x2,62	O-Ring	4	☒
51	550242	Girello 1" G	Ring nut	2	
52	550210	Tubetto ø 25	Hose tail	2	
53	394840	Flangia chiusura	Flange	1	
54	550340	Nipples 1"G(M)-1"G(M)	Threaded adapter	1	
55	550370	Curva ø 25	Elbow	1	
56	395000	Nipples collettore	Manifold nipples	2	
57	395520	Collettore corpo reg.	Body manifold	1	
58	390060	OR ø 20,63x2,62	O-Ring	1	
59	395020	Coll. corpo principale	Body manifold	1	
60	394870	Tappo chiusura lat.	Plug	1	
61	770260	OR ø 23,52x1,78	O-Ring	1	
70	392120	Spina elastica	Pin	1	
71	880581	Tappo 1/4" G	Plug	2	C ₃
84	395390	Dado M6	Nut	1	C ₁₀
96	396100	Coperchio filtro	Filter cover	1	
97	395081	OR ø 47,30x2,62	O-Ring	1	Viton ☒
98	395071	Guarnizione filtro	Filter gasket	2	
99	396110	Filtro interno	Internal filter	1	
100	396130	Rete esterna	External grid	1	
101	395030	Scatola filtro	Filter box	1	
102	394820	Staffa	Bracket	1	
103	770130	OR ø 20,35x1,78	O-Ring	1	☒
104	392330	Prigioniero M 6x30	Stud	8	C ₁₀
105	850730	Forcella	Fork	1	

Pos.	Cod.	Descrizione	Description	Q.ty	Note
106	1660560	Leva comando	Control lever	1	
108	1660020	Asta valvola	Complete valve rod	1	
109	480561	OR ø 6,85x1,78	O-Ring	2	Viton ☒
110	1660010	Corpo valvola reg.	Main valve	1	
111	1660230	OR ø 13x2	O-Ring	1	
112	1660541	Molla	Spring	1	
113	1660050	Valvola aliment.barra	Feed rod valve	1	
114	1660090	Molla	Spring	1	
115	1660080	Guida com. risucchio	Guide	1	
116	393790	Rosetta øi 6,4	Washer	1	
117	1660060	Flangia risucchio	Flange	1	
118	1660100	Sede risuc. ø 7 Rosso	Red seat	1	Vedi/See ●
	1660110	Sede risuc. ø 9 Arancio	Orange seat	1	Vedi/See ▲
	1660120	Sede risuc. ø 10,5 Blu	Blue seat	1	Vedi/See ■
119	1660140	Rondella	Washer	1	
120	1660551	OR ø 7x2	O-Ring	1	Viton
129	396590	Tappo 3/8" G+guarn.	Plug & gasket	1	☒

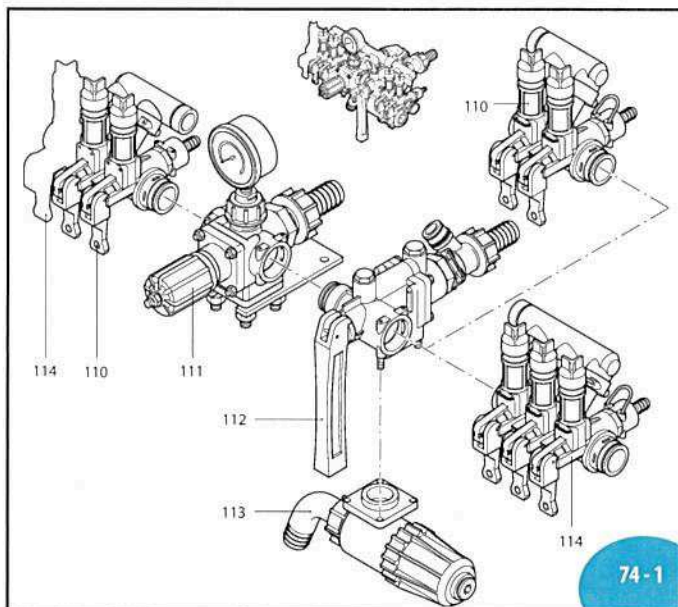
Note: Le quantità espresse sono riferite alla versione a 4 rubinetti
Note: The quantities refer to the 4 valves version

● Per/For:	AR 70 bp	● Per/For:	AR 60 bp
▲ Per/For:	AR 115-135 bp - AR 125-145 bp	▲ Per/For:	AR 100 bp - AR 120 bp
■ Per/For:	AR 160 bp	■ Per/For:	AR 150 bp

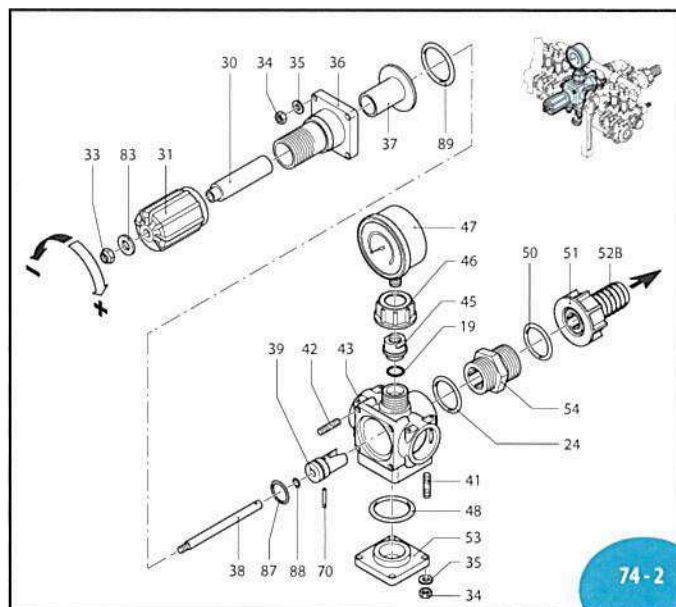


KIT 2346 OR O-Rings			
Pos.	Q.ty	Pos.	Q.ty
14	5	109	2
19	7	111	1
21	5	120	1
24	5		
48	3		
50	4		
58	1		
61	1		
97	1		
103	1		

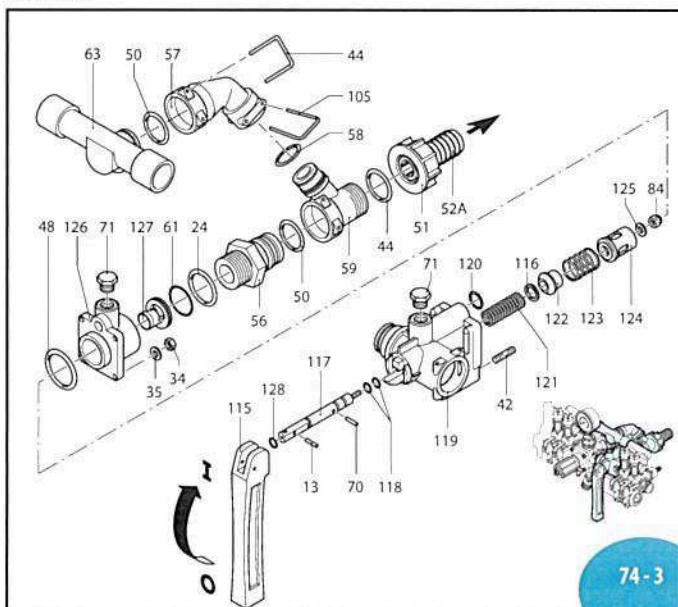
KIT 2339 Pronto intervento Maintenance repair			
Pos.	Q.ty	Pos.	Q.ty
12	2	60	1
14	5	61	1
18	2	98	2
24	5	106	1
38	1	109	2
39	1	113	1
44	1	115	1
51	1	120	1
55	1		
58	1		



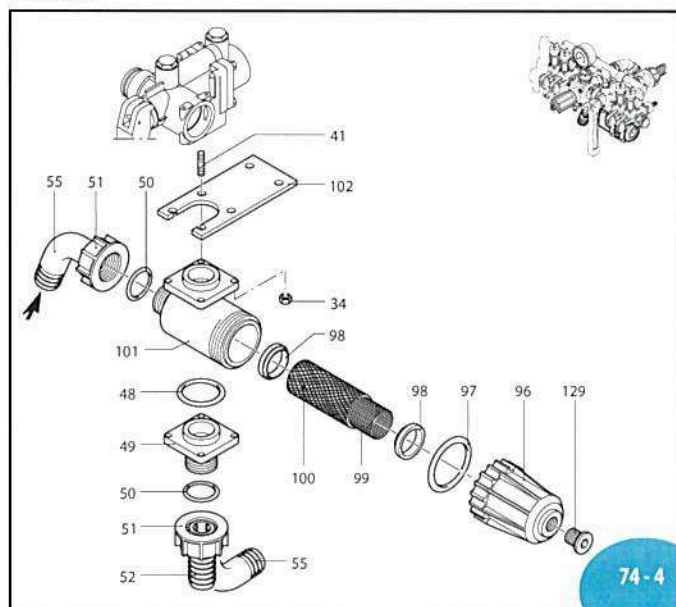
UN970187-DD



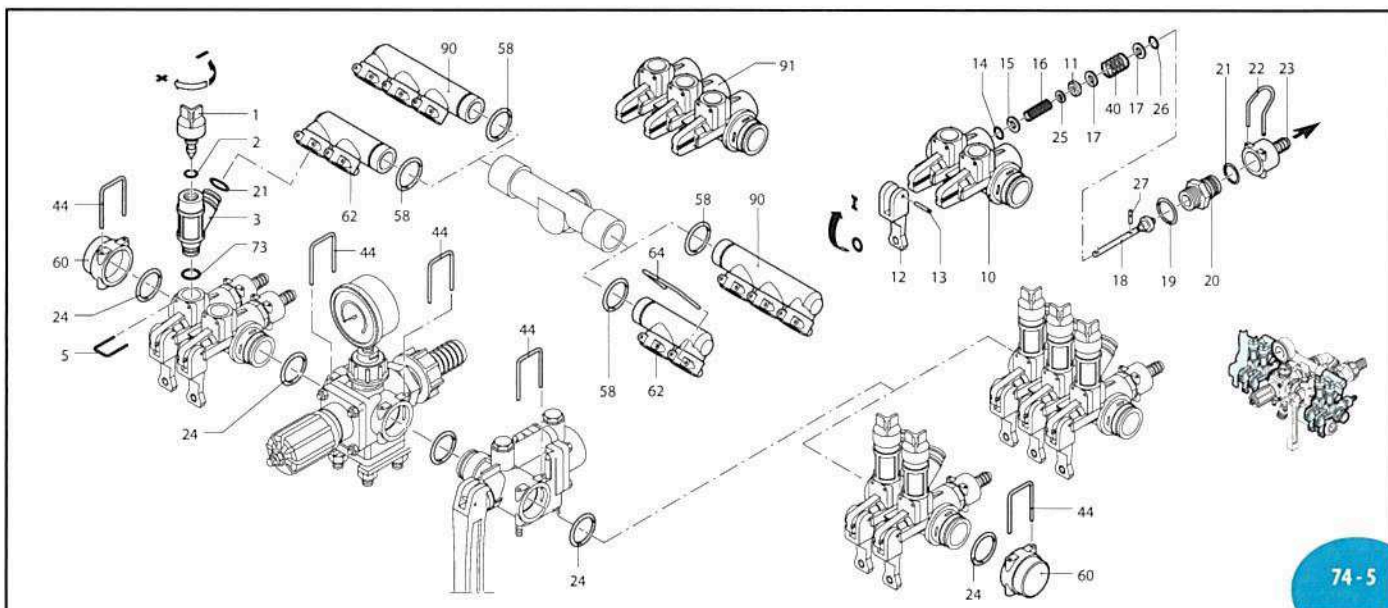
UN970188-DD



UN970189-DD



SL000112-GY



UN970191-DD

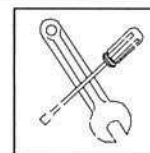
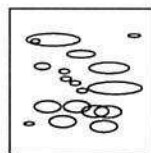
IDROMINUS

Pos.	Cod.	Descrizione	Description	Q.ty	Note
1	395430	Reg. scarico pressione	Press.discharge adjust.	4	
2	395590	OR ø 8x2,5	O-Ring	4	►
3	395420	Deviatore	Body	4	
5	395410	Forcella	Fork	4	
10	395400	Corpo rubinetto 2 vie	2-way valve body	2	
11	395470	Valvola chiusura	Valve	4	
12	394690	Leva rubinetto rossa	Red valve lever	4	
13	390330	Spina elastica	Pin	5	
14	390341	OR ø 5x2	O-Ring	4	
15	393790	Rosetta øi 6,4	Washer	4	
16	395480	Molla	Spring	4	
17	390313	Rosetta øi 9	Washer	8	
18	395450	Asta valvola completa	Complete valve rod	4	
19	180101	OR ø 17,5x2	O-Ring	5	
20	392600	Niples sede 20x1,5	Threaded adapter	4	
	392604	Tappo	Plug	-	Optional
21	640070	OR ø 13,95x2,62	O-Ring	8	►
22	392580	Forcella	Fork	4	
23	392870	Portagomma ø 10	Hose tail	4	
	392590	Portagomma ø 12	Hose tail	4	
	392620	Portagomma ø 20	Hose tail	4	
24	390291	OR ø 28,25x2,62	O-Ring	7	►
25	395490	Rosetta øi 6	Washer	4	
26	1080190	OR ø 2,90x1,78	O-Ring	4	
27	393300	Spina elastica	Pin	4	
30	395560	Distanziale	Spacer	1	
31	394790	Manopola regolazione	Adjustment knob	1	
33	391560	Dado M 6 H 8	Nut	1	
34	390440	Dado M 6	Nut	16	
35	550331	Rosetta øi 6,5	Washer	12	
36	394780	Corpo superiore	Upper body	1	►
37	395570	Centraggio	Spigot	1	☒
38	395541	Asta valvola	Complete valve rod	1	
39	395551	Valvola volumetrica	Volumetric valve	1	
40	395460	Molla	Spring	4	
41	394830	Prigioniero M 6x34	Stud	8	
42	392330	Prigioniero M 6x30	Stud	8	
43	394700	Corpo valvola reg.	Regulating valve body	1	
44	395530	Forcella	Fork	7	
45	394800	Attacco manometro	Pressure gauge attach.	1	
46	550450	Girello 3/4" G	Ring nut	1	
47	391240	Manometro ø 63	Pressure gauge	1	0-24bar ◀
48	660170	OR ø 31,42x2,62	O-Ring	3	
49	394810	Flangia entrata	Flange	1	
50	550350	OR ø 23,81x2,62	O-Ring	5	►
51	550242	Girello 1" G	Ring nut	3	
52	550210	Tubetto ø 25	Hose tail	3	
53	394840	Flangia chiusura	Flange cover	1	
54	550340	Niples 1"G(M)-1"G(M)	Threaded adapter	1	
55	550370	Curva ø 25	Elbow	1	
56	395000	Niples collettore	Manifold nipples	1	
57	395520	Collettore corpo reg.	Body manifold	1	
58	390060	OR ø 20,63x2,62	O-Ring	3	
59	395020	Coll. corpo principale	Body manifold	1	
60	395440	Tappo chiusura lat.	Plug	2	
61	770260	OR ø 23,52x1,78	O-Ring	1	
62	395500	Collettore laterale 2vie	2-way lateral manifold	2	
63	395510	Collettore centrale	Central manifold	1	
64	395580	Biforcina	Fork	2	
70	392120	Spina elastica	Pin	2	
71	880581	Tappo 1/4" G	Plug	2	◀ C ₁₀
73	390080	OR ø 11,91x2,62	O-Ring	4	►
83	392551	Rosetta øi 6	Washer	1	
84	395390	Dado M6	Nut	1	
87	880830	OR ø 15,54x2,62	O-Ring	1	
88	480480	OR ø 4,48x1,78	O-Ring	1	
89	1660580	OR ø 40,95x2,62	O-Ring	1	
90	395760	Collettore laterale 3vie	3-way lateral manifold	2	
91	395770	Corpo rubinetto 3 vie	3-way valve body	2	
96	396100	Coperchio filtro	Filter cover	1	
97	395081	OR ø 47,30x2,62	O-Ring	1	Viton
98	395071	Guarnizione filtro	Filter gasket	2	

Pos.	Cod.	Descrizione	Description	Q.ty	Note
99	396110	Filtro interno	Internal filter	1	
100	396130	Rete esterna	External grid	1	
101	395030	Scatola filtro	Filter box	1	
102	394820	Staffa	Bracket	1	
105	850730	Forcella	Fork	1	
110	1452	Gruppo rubinetto 2vie	2-way valve	2	Uscita/Outlet ø 12
111	1450	Valvola reg. completa	Compl.reg.valve	1	
112	1351	Corpo distributore+R	Distributor body+R	1	
113	1553	Gruppo filtro compl.	Complete filter	1	
114	1451	Gruppo rubinetto 3vie	3-way valve	2	Uscita/Outlet ø 12
115	1660560	Leva comando	Control lever	1	
116	1660140	Rosetta øi 10,5	Washer	1	
117	1660020	Asta valvola	Complete valve rod	1	☒
118	480561	OR ø 6,85x1,78	O-Ring	2	☒
119	1660010	Corpo valvola reg.	Main valve	1	
120	1660230	OR ø 13x2	O-Ring	1	
121	1660541	Molla	Spring	1	
122	1660050	Valvola aliment.barra	Feed rod valve	1	
123	1660090	Molla	Spring	1	
124	1660080	Guida comando risuc.	Guide	1	
125	393790	Rosetta øi 6,4	Washer	1	
126	1660060	Flangia risucchio	Flange	1	
127	1660100	Sede risuc. ø 7 Rosso	Red seat	1	Vedi/See ●
	1660110	Sede risuc. ø 9 Arancio	Orange seat	1	Vedi/See ▲
	1660120	Sede risuc. ø 10,5 Blu	Blue seat	1	Vedi/See ■
128	1660551	OR ø 7x2	O-Ring	1	Viton
129	396590	Tappo 3/8" G+guarn.	Plug & gasket	1	◀ C ₁₀

Nota: Le quantità espresse sono riferite alla versione a 4 rubinetti
Note: The quantities refer to the 4 valves version

● Per/For: AR 70 bp ● Per/For: AR 60 bp
▲ Per/For: AR 115-135 bp - AR 125-145 bp ▲ Per/For: AR 100 bp - AR 120 bp
■ Per/For: AR 160 bp ■ Per/For: AR 150 bp



KIT 2334 OR O-Rings			
Pos.	Q.ty	Pos.	Q.ty
2	4	87	1
14	4	88	1
19	5	89	1
21	8	97	1
24	7	118	2
26	4	120	1
48	3	128	1
50	5		
58	3		
61	1		
73	4		

KIT 2335 Pronto intervento Maintenance repair			
Pos.	Q.ty	Pos.	Q.ty
2	4	60	1
11	2	61	1
12	2	73	4
14	4	87	1
18	4	98	2
22	2	115	1
24	7	118	2
39	1	122	1
51	1	124	1
55	1	128	1
58	3		