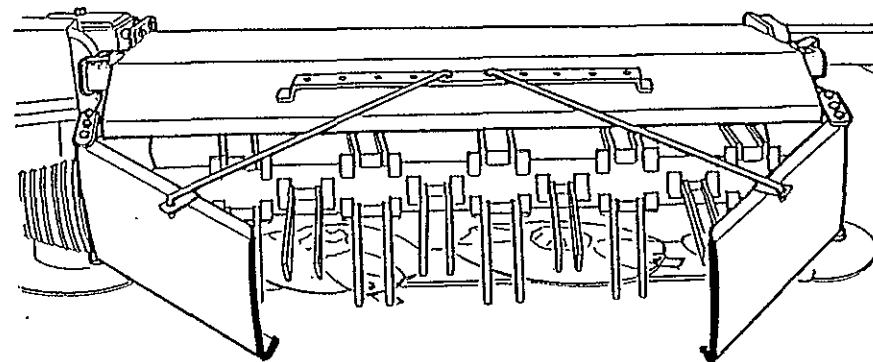


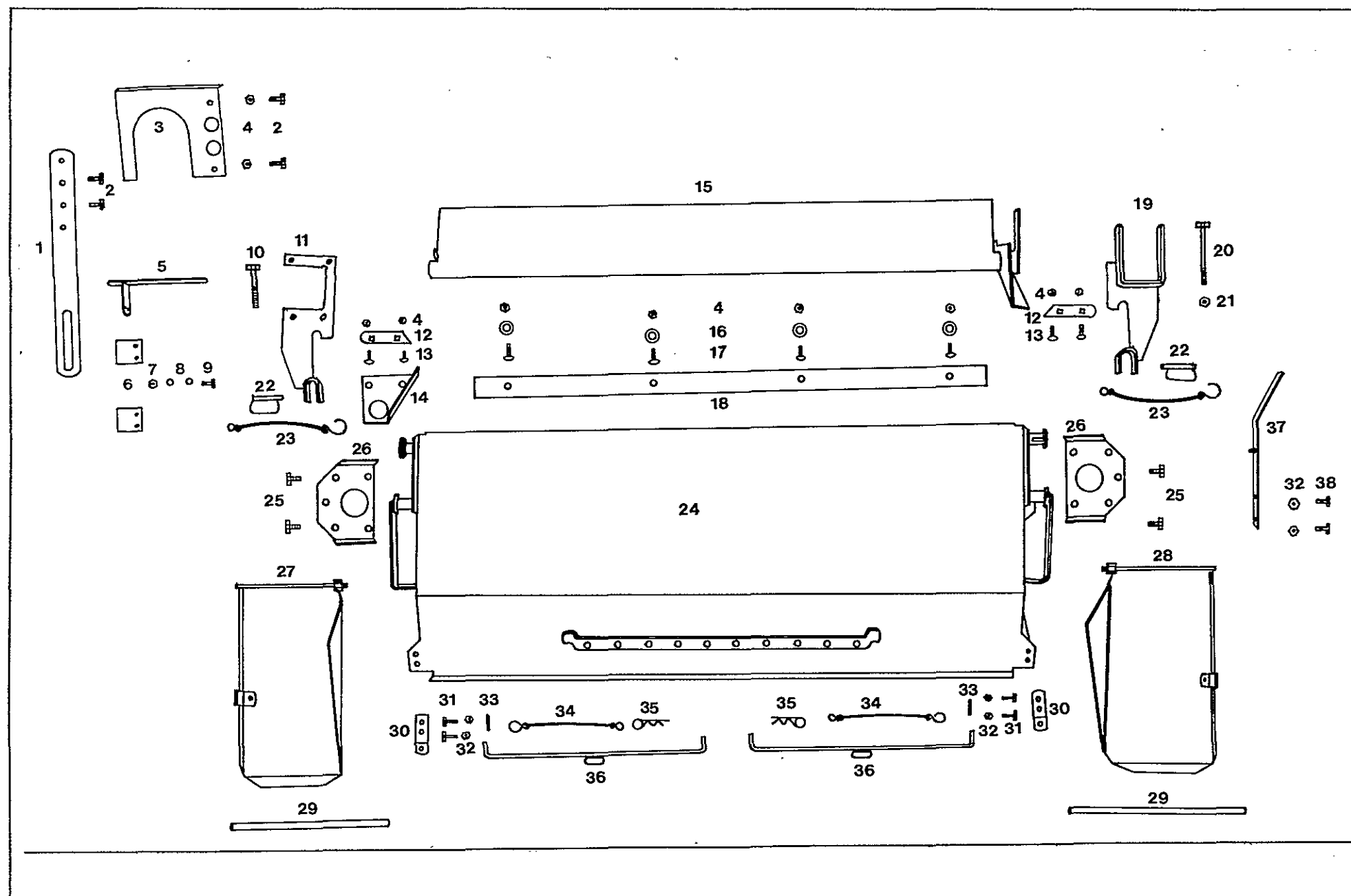


# Anbau-Conditioner

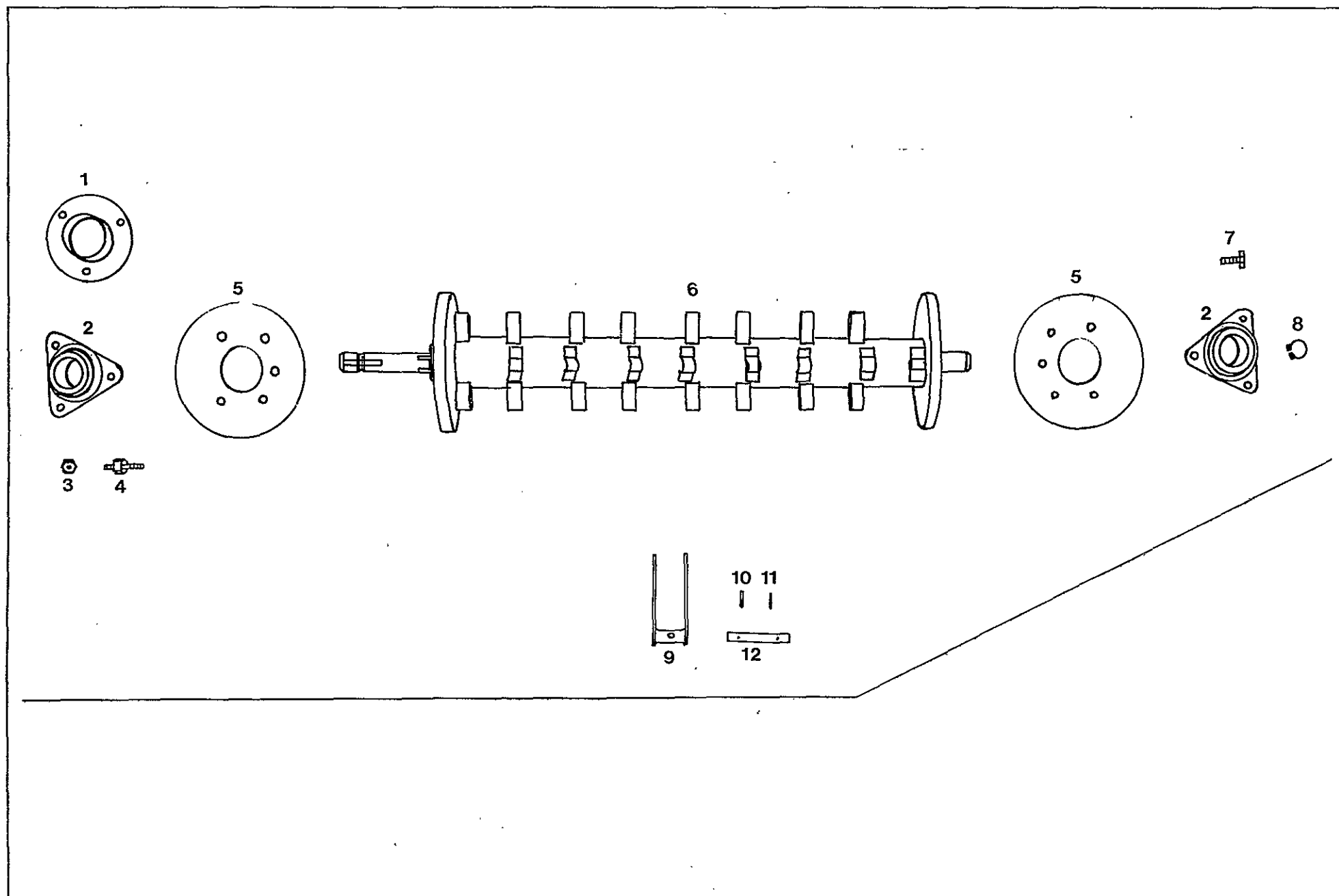
**Ersatzteilliste**  
**Instructions de Service et Liste des Pièces de Rechange**  
**Operating Instructions and Spare Parts List**  
**Istruzioni sull'uso e distina delle parti di ricambio**  
**Gebruiksaanwijzing en Onderdeelenlist**  
**Bruksanvisning och Reservdelslista**

**KC 216**

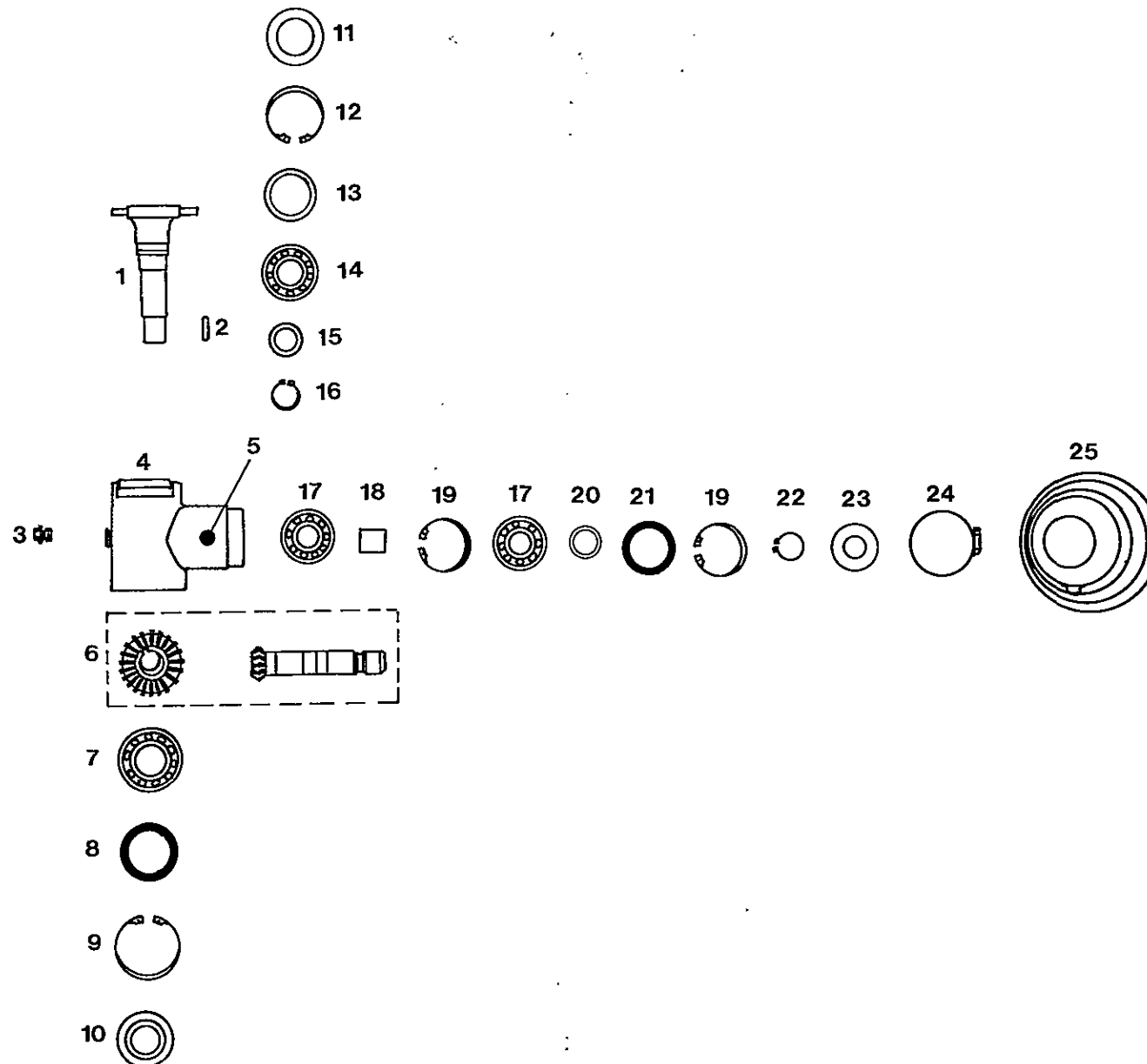




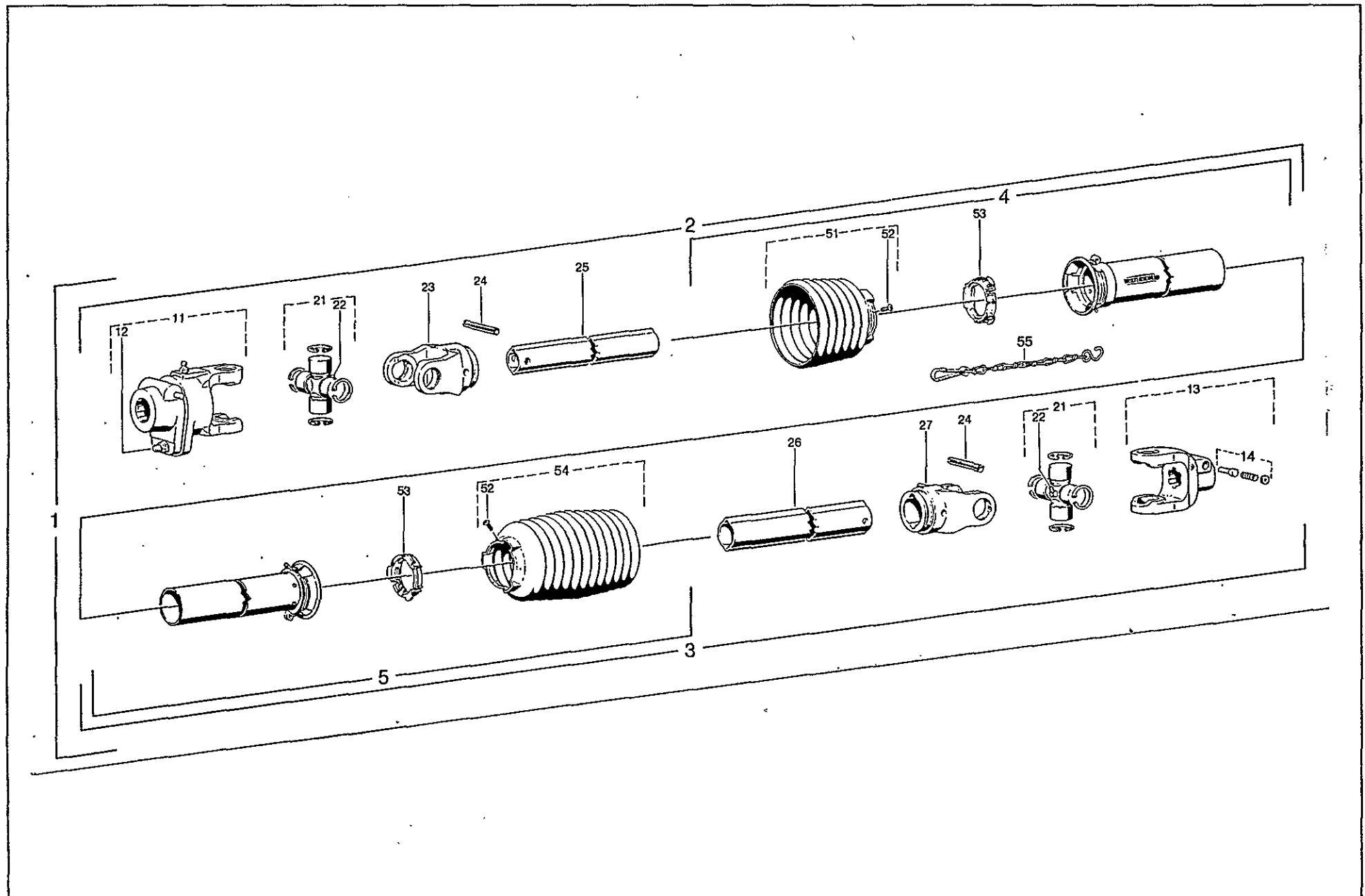
| Pos.Nr.<br>Pos.no.<br>Rep.<br>Pos.no. | Bezeichnung des Teiles<br>Description of the part<br>Désignation de la pièce<br>Descrizione del pezzo | X = Verschleißteil<br>X = wear part<br>X = pièces d'usure | * = kein Ersatzteil<br>* = no spare part<br>* = no pièce de rechange | Nr.<br>No.<br>No.<br>No. | KC 216 |  |  |  |
|---------------------------------------|---|---|--|--------------------------|--------|--|--|--|
|                                       | <b>Gehäuse</b>  |   |  |                          |        |  |  |  |
| 1                                     | Drehmomentstütze  |   |  | 496 747                  | ●      |  |  |  |
| 2                                     | 6kt.-Schraube M 10x25 K1.100 A1A, verbus-ripp   |   |  | 126 293                  | ●      |  |  |  |
| 3                                     | Schutzblech   |   |  | 496 761                  | ●      |  |  |  |
| 4                                     | Sicherungsmutter M 10 DIN 6925-8 A1A  |   |  | 108 441                  | ●      |  |  |  |
| 5                                     | Halter  |   |  | 496 748                  | ●      |  |  |  |
| 6                                     | Kunststoffplatte  |   |  | 122 291                  | X      |  |  |  |
| 7                                     | Sicherungsmutter M 6 DIN 985-8 A1A  |   |  | 106 903                  | ●      |  |  |  |
| 8                                     | Scheibe 6,4x18x1,6 DIN 9021   |   |  | 124 512                  | ●      |  |  |  |
| 9                                     | 6kt.-Schraube M 6x35 DIN 933-8.8 A1A  |   |  | 124 944                  | ●      |  |  |  |
| 10                                    | 6kt.-Schraube M 12x70 DIN 931-8.8 A1A   |   |  | 126 845                  | ●      |  |  |  |
| 11                                    | Einhängeplatte, links   |   |  | 496 567                  | ●      |  |  |  |
| 12                                    | Zwischenstück   |   |  | 496 588                  | ●      |  |  |  |
| 13                                    | Flachrundschrabe M 10x25 DIN 603-4.6 A1A  |   |  | 116 233                  | ●      |  |  |  |
| 14                                    | Halteblech, links   |   |  | 496 587                  | ●      |  |  |  |
| 15                                    | Leitblech   |   |  | 496 583                  | ●      |  |  |  |
| 16                                    | Scheibe 10,5 DIN 125 ZN 3   |   |  | 115 973                  | ●      |  |  |  |
| 17                                    | Flachrundschrabe M 10x20 DIN 603-4.6 A1A  |   |  | 107 679                  | ●      |  |  |  |
| 18                                    | Schlagschiene   |   |  | 476 692                  | ●      |  |  |  |
| 19                                    | Einhängeplatte, rechts  |   |  | 496 565                  | ●      |  |  |  |
| 20                                    | 6kt.-Schraube M 12x110 DIN 931-8.8 A1A  |   |  | 124 134                  | ●      |  |  |  |
| 21                                    | Sicherungsmutter M 12 DIN 6925-8 A1A  |   |  | 108 589                  | ●      |  |  |  |
| 22                                    | Federbolzen   |   |  | 106 857                  | X      |  |  |  |
| 23                                    | Sicherungsschnur  |   |  | 111 895                  | X      |  |  |  |
| 24                                    | Haube   |   |  | 496 570                  | ●      |  |  |  |
| 25                                    | 6kt.-Schraube M 12x25 DIN 933-8.8 A1A Verbus-plus   |   |  | 126 662                  | ●      |  |  |  |
| 26                                    | Lagerblech  |   |  | 476 467                  | ●      |  |  |  |
| 27                                    | Schwadblech, links  |   |  | 476 513G                 | ●      |  |  |  |
| 28                                    | Schwadblech, rechts   |   |  | 476 512G                 | ●      |  |  |  |
| 29                                    | Kantenschutz L 450 mm   |   |  | 115 674                  | X      |  |  |  |
| 30                                    | Lasche  |   |  | 476 491                  | ●      |  |  |  |
| 31                                    | 6kt.-Schraube M 8x25 DIN 933 -8.8 A1A   |   |  | 116 614                  | ●      |  |  |  |
| 32                                    | Sicherungsmutter m 8 DIN 6925-8 A1A   |   |  | 108 531                  | ●      |  |  |  |
| 33                                    | Splint 4x20 DIN 94 ZN 3   |   |  | 115 907                  | ●      |  |  |  |
| 34                                    | Sicherungsschnur  |   |  | 122 466                  | X      |  |  |  |
| 35                                    | Federstecker 4 DIN 11024 ZN 3   |   |  | 115 918                  | X      |  |  |  |
| 36                                    | Verbindungsstange   |   |  | 475 641                  | ●      |  |  |  |
| 37                                    | Flachfeder  |   |  | 122 425                  | ●      |  |  |  |
| 38                                    | 6kt.-Schraube M 8x16 DIN 933-8.8 A1A  |   |  | 116 612                  | ●      |  |  |  |
|                                       | <b>Housing</b>  |   |  |                          |        |  |  |  |
|                                       | Torque support  |   |  |                          |        |  |  |  |
|                                       | Hexagonal bolt  |   |  |                          |        |  |  |  |
|                                       | Wheel guard   |   |  |                          |        |  |  |  |
|                                       | Retaining nut   |   |  |                          |        |  |  |  |
|                                       | Support   |   |  |                          |        |  |  |  |
|                                       | Plastic plate   |   |  |                          |        |  |  |  |
|                                       | Retaining nut   |   |  |                          |        |  |  |  |
|                                       | Washer  |   |  |                          |        |  |  |  |
|                                       | Hexagonal bolt  |   |  |                          |        |  |  |  |
|                                       | Hexagonal bolt  |   |  |                          |        |  |  |  |
|                                       | Entry plate, left   |   |  |                          |        |  |  |  |
|                                       | Intermediate piece  |   |  |                          |        |  |  |  |
|                                       | Flat round bolt   |   |  |                          |        |  |  |  |
|                                       | Support plate, left   |   |  |                          |        |  |  |  |
|                                       | Baffle plate  |   |  |                          |        |  |  |  |
|                                       | Washer  |   |  |                          |        |  |  |  |
|                                       | Flat round bolt   |   |  |                          |        |  |  |  |
|                                       | Rail  |   |  |                          |        |  |  |  |
|                                       | Entry plate, right  |   |  |                          |        |  |  |  |
|                                       | Hexagonal bolt  |   |  |                          |        |  |  |  |
|                                       | Retaining nut   |   |  |                          |        |  |  |  |
|                                       | Clip-on bolt  |   |  |                          |        |  |  |  |
|                                       | Safety cord   |   |  |                          |        |  |  |  |
|                                       | Cover   |   |  |                          |        |  |  |  |
|                                       | Hexagonal bolt  |   |  |                          |        |  |  |  |
|                                       | Bracket   |   |  |                          |        |  |  |  |
|                                       | Swathboard, left  |   |  |                          |        |  |  |  |
|                                       | Swathboard, right   |   |  |                          |        |  |  |  |
|                                       | Edge protection   |   |  |                          |        |  |  |  |
|                                       | Tongue  |   |  |                          |        |  |  |  |
|                                       | Hexagonal bolt  |   |  |                          |        |  |  |  |
|                                       | Retaining nut   |   |  |                          |        |  |  |  |
|                                       | Cotter pin  |   |  |                          |        |  |  |  |
|                                       | Safety cord   |   |  |                          |        |  |  |  |
|                                       | Plug  |   |  |                          |        |  |  |  |
|                                       | Connection bar  |   |  |                          |        |  |  |  |
|                                       | Flat spring   |   |  |                          |        |  |  |  |
|                                       | Hexagonal bolt  |   |  |                          |        |  |  |  |
|                                       | <b>Boîte</b>  |   |  |                          |        |  |  |  |
|                                       | Support de couple   |   |  |                          |        |  |  |  |
|                                       | Vis à 6 pans  |   |  |                          |        |  |  |  |
|                                       | Tôle de protection  |   |  |                          |        |  |  |  |
|                                       | Ecrou de maintien   |   |  |                          |        |  |  |  |
|                                       | Support   |   |  |                          |        |  |  |  |
|                                       | Plaque plastique  |   |  |                          |        |  |  |  |
|                                       | Ecrou de maintien   |   |  |                          |        |  |  |  |
|                                       | Rondelle  |   |  |                          |        |  |  |  |
|                                       | Vis à 6 pans  |   |  |                          |        |  |  |  |
|                                       | Vis à 6 pans  |   |  |                          |        |  |  |  |
|                                       | Plaque d'entrée, gauche   |   |  |                          |        |  |  |  |
|                                       | Pièce intermédiaire   |   |  |                          |        |  |  |  |
|                                       | Vis plat rond   |   |  |                          |        |  |  |  |
|                                       | Tôle de support, gauche   |   |  |                          |        |  |  |  |
|                                       | Tôle-guide  |   |  |                          |        |  |  |  |
|                                       | Rondelle  |   |  |                          |        |  |  |  |
|                                       | Vis plat rond   |   |  |                          |        |  |  |  |
|                                       | Rail  |   |  |                          |        |  |  |  |
|                                       | Plaque d'entrée, droit  |   |  |                          |        |  |  |  |
|                                       | Vis à 6 pans  |   |  |                          |        |  |  |  |
|                                       | Ecrou de maintien   |   |  |                          |        |  |  |  |
|                                       | Axe de réglage à ressort  |   |  |                          |        |  |  |  |
|                                       | Cordon d'arrêt  |   |  |                          |        |  |  |  |
|                                       | Câpot   |   |  |                          |        |  |  |  |
|                                       | Vis à 6 pans  |   |  |                          |        |  |  |  |
|                                       | Tôle de palier  |   |  |                          |        |  |  |  |
|                                       | Planche à andains, gauche   |   |  |                          |        |  |  |  |
|                                       | Planche à andains, droit  |   |  |                          |        |  |  |  |
|                                       | Protège-arête   |   |  |                          |        |  |  |  |
|                                       | Eclisse   |   |  |                          |        |  |  |  |
|                                       | Vis à 6 pans  |   |  |                          |        |  |  |  |
|                                       | Ecrou de maintien   |   |  |                          |        |  |  |  |
|                                       | Goupille  |   |  |                          |        |  |  |  |
|                                       | Cordon d'arrêt  |   |  |                          |        |  |  |  |
|                                       | Fiche   |   |  |                          |        |  |  |  |
|                                       | Barre de connection   |   |  |                          |        |  |  |  |
|                                       | Ressort plat  |   |  |                          |        |  |  |  |
|                                       | Vis à 6 pans  |   |  |                          |        |  |  |  |



| Pos.Nr.<br>Pos.no.<br>Rep.<br>Pos. no. | Bezeichnung des Teiles<br>Description of the part.<br>Désignation de la pièce<br>Descrizione del pezzo | X = Verschleißteil<br>X = wear part<br>X = pièces d'usure | * = kein Ersatzteil<br>* = no spare part<br>* = no pièce de rechange | Nr.<br>No.<br>No.<br>No. | KC 216 |  |  |  |
|--|--|---|--|--------------------------|--------|--|--|--|
|  | <b>Rohrwelle</b>   |   |  |                          |        |  |  |  |
| 1                                      | Scheibe  |   |  | 496 611                  | •      |  |  |  |
| 2                                      | Flanschgehäuse   |   |  | 122 557                  | •      |  |  |  |
| 3                                      | Sicherungsmutter M 12 DIN 6925-8 A1A   |   |  | 108 589                  | •      |  |  |  |
| 4                                      | Gewindestehbolzen  |   |  | 122 445                  | •      |  |  |  |
| 5                                      | Schutzscheibe  |   |  | 476 437                  | •      |  |  |  |
| 6                                      | Rohrwelle  |   |  | 496 686                  | •      |  |  |  |
| 7                                      | 6kt.-Schraube M 12x35 DIN 933-10.9 A1A   |   |  | 126 301                  | •      |  |  |  |
| 8                                      | Sicherungsring 35x1,5 DIN 471  |   |  | 107 367                  | •      |  |  |  |
| 9                                      | Zinken   |   |  | 496 688                  | X      |  |  |  |
| 10                                     | Spannstift 6x30 DIN 1481   |   |  | 107 449                  | •      |  |  |  |
| 11                                     | Spannstift 3,5x30 DIN 1481   |   |  | 108 415                  | •      |  |  |  |
| 12                                     | Gelenkbolzen   |   |  | 122 422                  | •      |  |  |  |
|  | <b>Pipe shaft</b>  |   |  |                          |        |  |  |  |
|  | Washer   |   |  |                          |        |  |  |  |
|  | Socket box   |   |  |                          |        |  |  |  |
|  | Retaining nut  |   |  |                          |        |  |  |  |
|  | Threaded bolt  |   |  |                          |        |  |  |  |
|  | Protective plate   |   |  |                          |        |  |  |  |
|  | Pipe shaft   |   |  |                          |        |  |  |  |
|  | Hexagonal bolt   |   |  |                          |        |  |  |  |
|  | Snap ring  |   |  |                          |        |  |  |  |
|  | Tine   |   |  |                          |        |  |  |  |
|  | Tensoin pin  |   |  |                          |        |  |  |  |
|  | Tension pin  |   |  |                          |        |  |  |  |
|  | Joint bolt   |   |  |                          |        |  |  |  |
|  | <b>Arbre tubulaire</b>   |   |  |                          |        |  |  |  |
|  | Rondelle   |   |  |                          |        |  |  |  |
|  | Boîte de la bride  |   |  |                          |        |  |  |  |
|  | Ecrou de maintien  |   |  |                          |        |  |  |  |
|  | Boulon fileté  |   |  |                          |        |  |  |  |
|  | Plaque de protection   |   |  |                          |        |  |  |  |
|  | Arbre tubulaire  |   |  |                          |        |  |  |  |
|  | Vis à 6 pans   |   |  |                          |        |  |  |  |
|  | Circlip extérieur  |   |  |                          |        |  |  |  |
|  | Dent   |   |  |                          |        |  |  |  |
|  | Goupille   |   |  |                          |        |  |  |  |
|  | Goupille   |   |  |                          |        |  |  |  |
|  | Boulon d'articulation  |   |  |                          |        |  |  |  |



E6





| Pos.Nr.<br>Pos.no.<br>Rep.<br>Pos.no. | Bezeichnung des Teiles<br>Description of the part<br>Désignation de la pièce<br>Descrizione del pezzo |   |  | Nr.<br>No.<br>No.<br>No. |
|---------------------------------------|---|---|--|--------------------------|
|                                       | <b>Gelenkwelle W2200-SC15-1010-K61/1<br/>für Conditioner KC 216</b>                                   | <b>PTO shaft for conditioner</b>                                    | <b>Arbre de transmission pour<br/>conditionneur</b>  |                          |
| 1                                     | Gelenkwelle mit Schutz W2200-SC15-1010-K61/6  | PTO drive shaft with guard  | Transmission avec protecteur   | 181 696                  |
| 2                                     | Innere Gelenkwellenhälfte mit äußerer Schutz-<br>hälfte WH 2200-SC15-940-K61/1                        | Inner PTO drive shaft half with<br>outer guard half                 | Demi-transmission intérieur avec<br>demi-protecteur extérieur                                | 356 628                  |
| 3                                     | Äußere Gelenkwellenhälfte mit innerer Schutz-<br>hälfte WH 2200-SC15-935                              | Outer PTO drive shaft half with<br>inner guard half                 | Demi-transmission extérieure avec<br>demi-protecteur intérieur                               | 181 695                  |
| 4                                     | Äußere Schutzhälfte SCH15-A 840   | Outer guard half  | Demi-protecteur extérieur  | 161 405                  |
| 5                                     | Innere Schutzhälfte SCH15-J 840   | Inner guard half  | Demi-protecteur intérieur  | 182 047                  |
| 11                                    | Scherbolzenkupplung kompl., drehsinnunabhängig<br>K61/6-2200-1 3/8"(6)STI; M=1400 Nm                  | Shear bolt clutch cpl. independent<br>of direction of rotation      | Limiteur à boulon de rupture cpl.<br>indépendant du sens de rotation                         | 356 609                  |
| 12                                    | 6kt.-Schraube M 8x40 DIN 931-8.8  | Hexagonal bolt  | Vis à 6 pans   | 702 287                  |
| 13                                    | Aufsteckgabel, kompl. AG 2200-1 3/8"(6)   | Quick-disconnect yoke cpl.  | Mâchoire à verrouillage rapide   | 041 049                  |
| 14                                    | Schiebestift, kompl.  | Quick-disconnect pin cpl.   | Poussoir de verrouillage rapide  | 339 107                  |
| 21                                    | Kreuzgarnitur, kompl.   | Cross and bearing kit cpl.  | Bloc croisillon cpl.   | 044 439                  |
| 22                                    | Kegelschmiernippel M 8x1  | Lubrication fitting   | Graisser   | 084 099                  |
| 23                                    | Rillengabel RG 2200-0v  | Inboard yoke  | Mâchoire à gorge   | 041 065                  |
| 24                                    | Spannstift 10x65 DIN 1481   | Tension pin   | Goupille   | 020 614                  |
| 25                                    | Profilrohr 0v-900   | Profile tube  | Tube profilé   | 090 347                  |
| 26                                    | Profilrohr 1-895  | Profile tube  | Tube profilé   | 049 662                  |
| 27                                    | Rillengabel RG 2200-1   | Inboard yoke  | Mâchoire à gorge   | 041 068                  |
| 51                                    | Schutztrichter mit Schraube RP 5  | Guard cone with screw   | Cône protecteur avec vis   | 365 345                  |
| 52                                    | Schraube 4x10   | Screw   | Vis  | 365 305                  |
| 53                                    | Gleitring   | Bearing ring  | Bague de glissement  | 087 279                  |
| 54                                    | Schutztrichter mit Schraube RP 12   | Guard cone with screw   | Cône protecteur avec vis   | 173 549                  |
| 55                                    | Haltekette  | Safety chain  | Chaînette  | 044 321                  |
|                                       | Ersatzteile können nur über die Firma Walterscheid<br>bezogen werden.                                 | Spare parts can only be purchased<br>from the Walterscheid company. | Les pièces de rechange peuvent<br>seulement être achetées de chez<br>la maison Walterscheid. |                          |


# Ersatzteilliste

## NUMMERNVERZEICHNIS

### INDEX OF NUMBERS

## LIST NUMERIQUE

### INDICE PER NUMERI

| Bestell-Nr.<br>Part no<br>No de commande<br>No d'ordinazione | Tafel<br>Table<br>Tableau<br>Tavola | Pos.-Nr.<br>Pos.-no<br>No de pos.<br>Pos. No | Bestell-Nr.<br>Part no<br>No de commande<br>No d'ordinazione | Tafel<br>Table<br>Tableau<br>Tavola | Pos.-Nr.<br>Pos.-no<br>No de pos.<br>Pos. No | Bestell-Nr.<br>Part no<br>No de commande<br>No d'ordinazione                        | Tafel<br>Table<br>Tableau<br>Tavola | Pos.-Nr.<br>Pos.-no<br>No de pos.<br>Pos. No | Bestell-Nr.<br>Part no<br>No de commande<br>No d'ordinazione | Tafel<br>Table<br>Tableau<br>Tavola | Pos.-Nr.<br>Pos.-no<br>No de pos.<br>Pos. No |
|--|-------------------------------------|--|--|-------------------------------------|--|---|-------------------------------------|--|--|-------------------------------------|--|
| 105 328  | 3.14                                |  | 124 914  | 3.20                                |  |  |                                     |  |  |                                     |  |
| 105 538  | 3.03                                |  | 124 944  | 1.09                                |  |   |                                     |  |  |                                     |  |
| 106 857  | 1.22                                |  | 124 955  | 3.15                                |  |   |                                     |  |  |                                     |  |
| 106 903  | 1.07                                |  | 126 032  | 3.17                                |  |   |                                     |  |  |                                     |  |
| 107 165  | 3.02                                |  | 126 242  | 3.21                                |  |   |                                     |  |  |                                     |  |
| 107 367  | 2.08                                | 3.22   | 126 293  | 1.02                                |  |   |                                     |  |  |                                     |  |
| 107 369  | 3.16                                |  | 126 301  | 2.07                                |  |   |                                     |  |  |                                     |  |
| 107 385  | 3.19                                |  | 126 320  | 3.13                                |  |   |                                     |  |  |                                     |  |
| 107 386  | 3.12                                |  | 126 321  | 3.08                                |  |   |                                     |  |  |                                     |  |
| 107 449  | 2.10                                |  | 126 368  | 3.20                                |  |   |                                     |  |  |                                     |  |
| 107 679  | 1.17                                |  | 126 369  | 3.20                                |  | 020 614   | 4.24                                |  |  |                                     |  |
| 108 392  | 3.23                                |  | 126 375  | 3.21                                |  | 041 049   | 4.13                                |  |  |                                     |  |
| 108 415  | 2.11                                |  | 126 436  | 3.05                                |  | 041 065   | 4.23                                |  |  |                                     |  |
| 108 441  | 1.04                                |  | 126 458  | 3.08                                |  | 041 068   | 4.27                                |  |  |                                     |  |
| 108 531  | 1.32                                |  | 126 662  | 1.25                                |  | 044 321   | 4.55                                |  |  |                                     |  |
| 108 589  | 1.21                                | 2.03   | 126 754  | 3.08                                |  | 044 439   | 4.21                                |  |  |                                     |  |
| 108 653  | 3.09                                |  | 126 755  | 3.08                                |  | 049 662   | 4.26                                |  |  |                                     |  |
| 108 689  | 3.11                                |  | 126 845  | 1.10                                |  | 084 099   | 4.22                                |  |  |                                     |  |
| 111 895  | 1.23                                |  | 126 865  | 3.13                                |  | 087 279   | 4.53                                |  |  |                                     |  |
| 115 674  | 1.29                                |  | 126 866  | 3.13                                |  | 090 347   | 4.25                                |  |  |                                     |  |
| 115 907  | 1.33                                |  | 126 867  | 3.10                                |  | 161 405   | 4.04                                |  |  |                                     |  |
| 115 918  | 1.35                                |  | 475 185  | 3.25                                |  | 173 549   | 4.54                                |  |  |                                     |  |
| 115 973  | 1.16                                |  | 475 641  | 1.36                                |  | 181 695   | 4.03                                |  |  |                                     |  |
| 116 233  | 1.13                                |  | 476 437  | 2.05                                |  | 181 696   | 4.01                                |  |  |                                     |  |
| 116 612  | 1.38                                |  | 476 467  | 1.26                                |  | 182 047   | 4.05                                |  |  |                                     |  |
| 116 614  | 1.31                                |  | 476 491  | 1.30                                |  | 339 107   | 4.14                                |  |  |                                     |  |
| 117 370  | 3.07                                |  | 476 512  | 1.28                                |  | 356 609   | 4.11                                |  |  |                                     |  |
| 122 557  | 2.02                                |  | 476 513  | 1.27                                |  | 356 628   | 4.02                                |  |  |                                     |  |
| 117 831  | 3.24                                |  | 476 692  | 1.18                                |  | 365 305   | 4.52                                |  |  |                                     |  |
| 120 593  | 3.21                                |  | 496 565  | 1.19                                |  | 365 345   | 4.51                                |  |  |                                     |  |
| 122 291  | 1.06                                |  | 496 567  | 1.11                                |  | 702 287   | 4.12                                |  |  |                                     |  |
| 122 422  | 2.12                                |  | 496 570  | 1.24                                |  |   |                                     |  |  |                                     |  |
| 122 425  | 1.37                                |  | 496 583  | 1.15                                |  |   |                                     |  |  |                                     |  |
| 122 445  | 2.04                                |  | 496 587  | 1.14                                |  |   |                                     |  |  |                                     |  |
| 122 448  | 3.04                                |  | 496 588  | 1.12                                |  |   |                                     |  |  |                                     |  |
| 122 449  | 3.01                                |  | 496 611  | 2.01                                |  |   |                                     |  |  |                                     |  |
| 122 452  | 3.18                                |  | 496 686  | 2.06                                |  |   |                                     |  |  |                                     |  |
| 122 453  | 3.06                                |  | 496 688  | 2.09                                |  |   |                                     |  |  |                                     |  |
| 122 466  | 1.34                                |  | 496 747  | 1.01                                |  |   |                                     |  |  |                                     |  |
| 124 134  | 1.20                                |  | 496 748  | 1.05                                |  |   |                                     |  |  |                                     |  |
| 124 151  | 3.20                                |  | 496 761  | 1.03                                |  |   |                                     |  |  |                                     |  |
| 124 436  | 3.21                                |  |  |                                     |  |   |                                     |  |  |                                     |  |
| 124 512  | 1.08                                |  |  |                                     |  |   |                                     |  |  |                                     |  |